



17th May 2023

Docket Section
National Highway Traffic Safety Administration
1200 New Jersey Ave. SE.
Washington, DC 20590

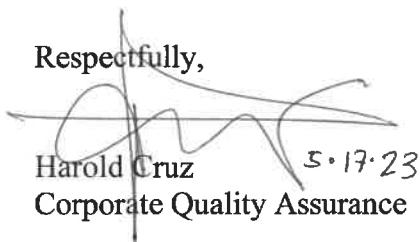
RE: New Pneumatic Tires for Motor Vehicles With a GVWR Less Than 4,536 Kilograms
(10,000 Pounds)

Pursuant to 49 CFR Ch 5 §571.139 Standard No. 139 Yokohama Tire Corporation (YTC), on behalf of Yokohama Rubber Company, advises that it will manufacture and distribute a new LT245/75R18 121/118(LI) Yokohama brand Light Truck tires in the Geolandar A/T4 G018 tread designs for use and service in the United States market. These tires are designed to carry maximum loads currently NOT listed in the 2022 Year Book of the Tire and Rim Association as indicated in the attached tire specification tables. This information has been prepared and will be provided to users of these new products with sufficient information to permit their proper selection and safe operational performance.

These LT245/75R18 121/118(LI) tires will be available for sale and distribution in the U.S. market approximately by the 2th Quarter of 2024 and all of its descriptive and specification literature is being prepared now and will be in both print and electronic formats for customer access and use prior to the tire sale.

If any further detail or clarification of this provided information is required, please direct any inquiry to me here at the corporate office address, by phone at 800-423-4544, extension 3836, or via internet email at harold.cruz@yokohamatire.com.

Respectfully,

A handwritten signature in black ink, appearing to read 'Harold Cruz', with the date '5.17.23' written to its right. The signature is written over a horizontal line.

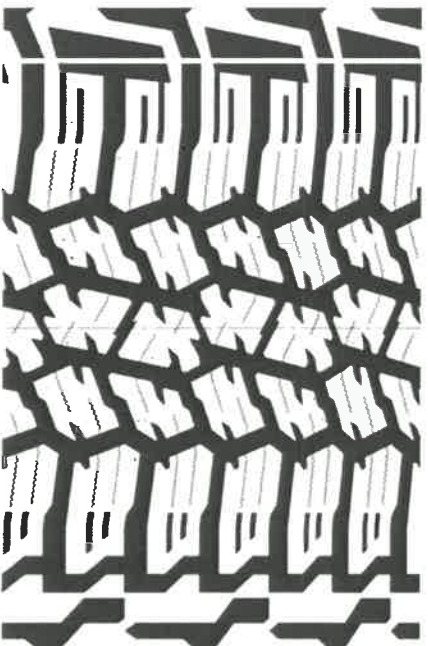
Harold Cruz 5.17.23
Corporate Quality Assurance

Attachment:

Tire Specification Chart-Yokohama Geolandar A/T4 LT245/75R18 121/118(LI) G018

YQA23-346 Request YRC-D for G018 1 size

LT G018



PRODUCT NAME

YOKOHAMA GEOLANDAR A/T4 G018

LT245/75R18 121/118(L) G018

SPECIFICATIONS

TIRE SIZE DESIGNATION	LOAD INDEX	PLY RATING	LOAD RANGE	TEST RIM WIDTH (INCHES)	MINIMUM SIZE FACTOR (INCHES)	SECTION WIDTH (INCHES)
LT245/75R18	121/118	10	E	7.0	41.54	9.76

MAXIMUM TIRE LOADS (kg) AT VARIOUS COLD INFLATION PRESSURES (kPa)

INFLATION PRESSURE [kPa]	250	300	350	400	450	500	550
TIRE LOAD [kg] (SINGLE)	-	850	975	1090	1180	1285	1400
TIRE LOAD [kg] (DUAL)	-	775	875	1000	1060	1180	1285