

NHTSA's Illustrations Showing No Interaction Between Type 2 Seat Belt and Intruding Door

Dynamic Testing Illustrations

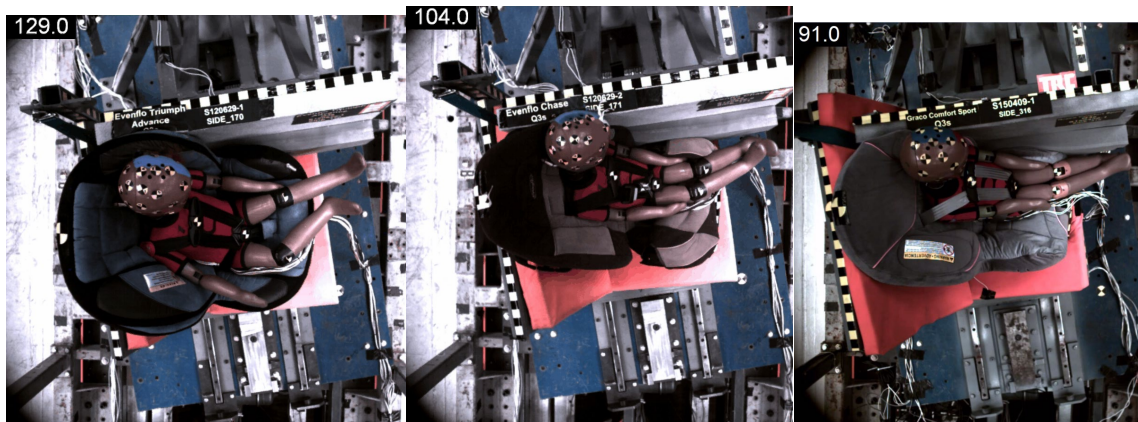


Figure 1. Evenflo Triumph Advanced (left), Evenflo Chase (middle) and Graco Comfort Sport (right) installed with Type 2 seat belt (Test 170, 171 and 316 / 8256, 8257 and 9632).

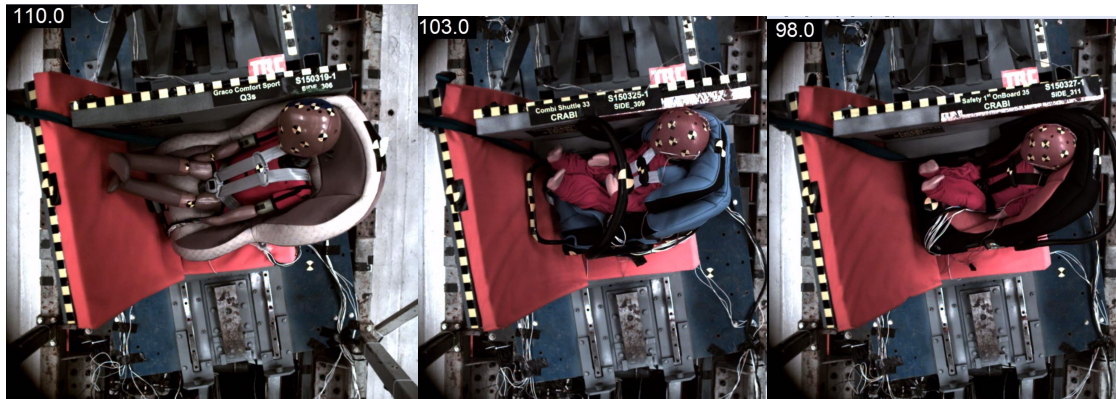


Figure 2. Graco Comfort Sport (left), Combi Shuttle Infant Carrier (middle) and Safety 1st OnBoard 35 Infant Carrier (right) installed with Type 2 seat belt in the final SISA configuration (Test 9622, 9625 and 9627).

Static Trials Illustrations



Figure 3. Seat belt position: door position before intrusion (left), door position when armrest is touching CRS (middle) and door position at maximum intrusion – No foam on door (right).