

June 16, 2022  
Our Ref: W-2252-A

Docket Management Facility  
U.S. Department of Transportation  
1200 New Jersey Avenue, S.E.  
West Building, Ground Floor, Room W12-140  
Washington, D.C. 20590-0001

**Re: 2023 Model Year Nissan Z Theft Target Areas (Docket No. NHTSA-2009-0069)**

Nissan North America, Inc. on its behalf, and on behalf of Nissan Motor Company, Ltd., of Yokohama, Japan ("Nissan") hereby transmits the enclosed information for the 2023 model year Nissan Z pursuant to 49 CFR Part 541.5(e)(2) and 49 CFR Part 541.6(e)(3). The attached drawing identifies the target areas for both production and replacement parts.

Sincerely,



---

Zhigang (Wayne) Wen  
Senior Engineer, Safety  
Government Affairs  
Nissan North America, Inc.

Enclosure  
Attachment I: 2023 Model Year Nissan Z Theft Target Areas

# **Attachment I**

2023 Model Year Nissan Z Theft Target Areas

NISSAN MOTOR Co., Ltd.

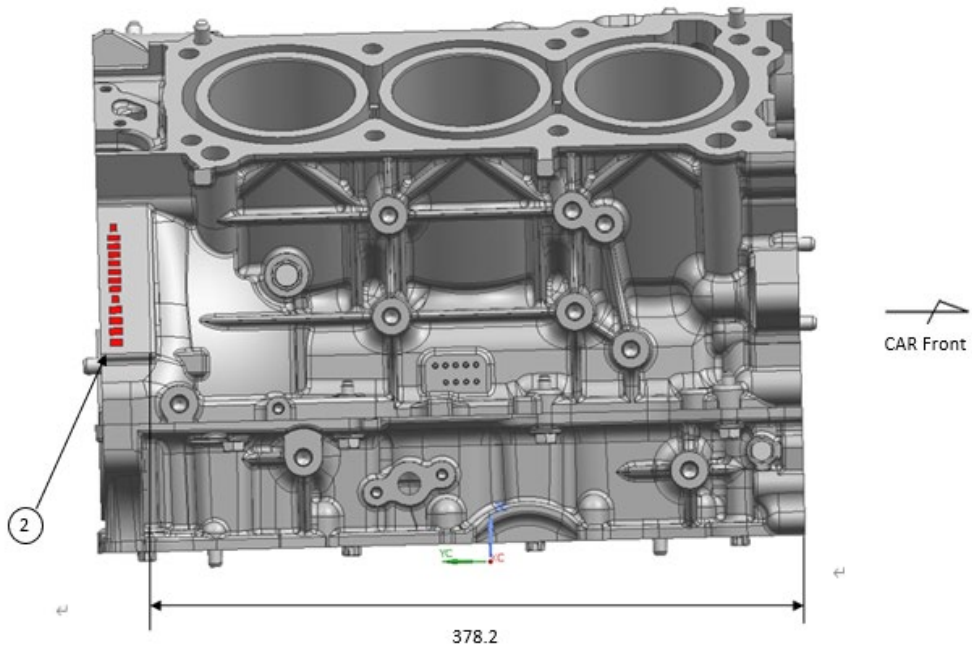
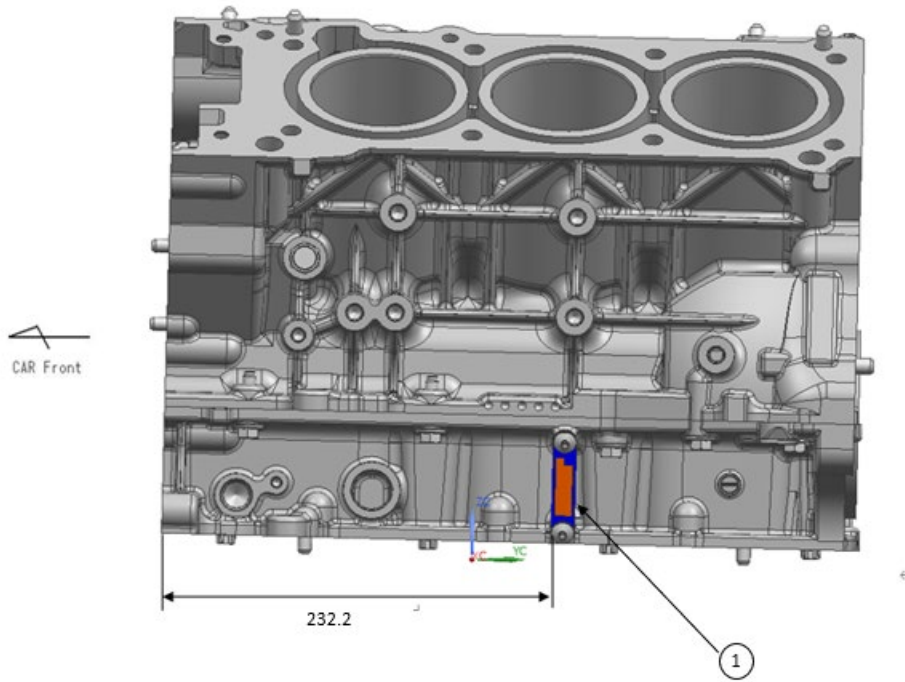
Drawing No.:1

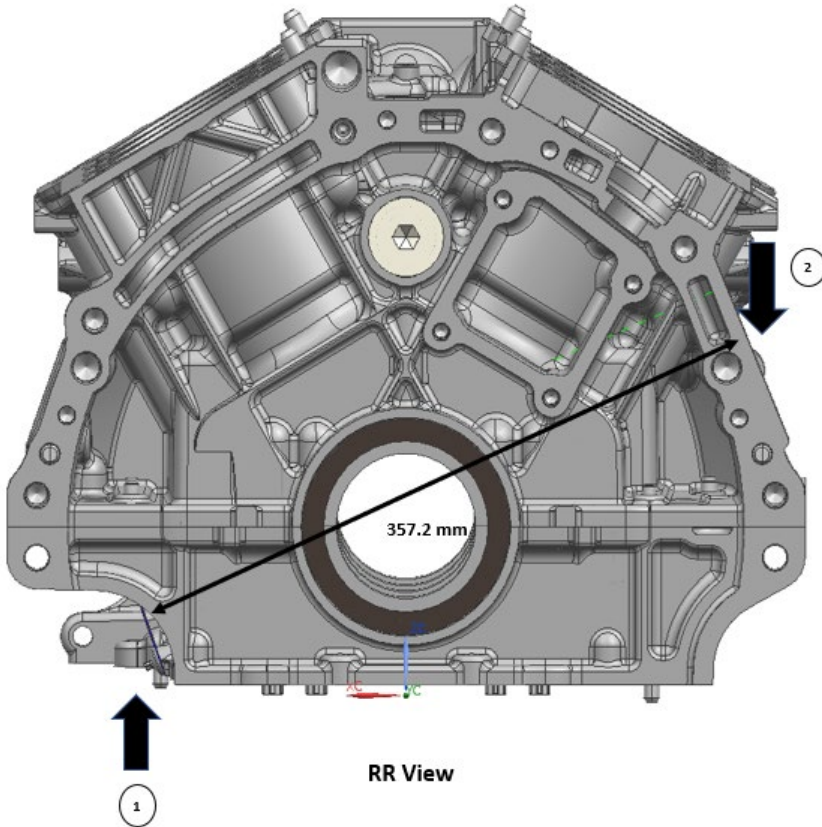
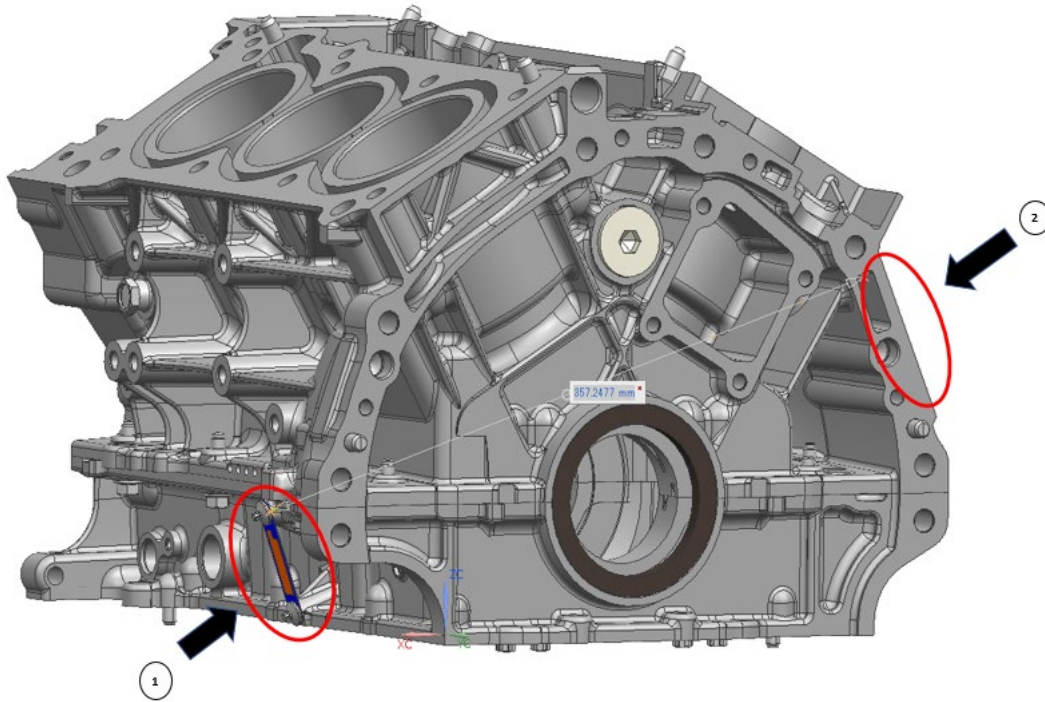
Model : Nissan Z

① Target Area: Production Parts

Part : Engine (VR30) ((a)(1))

② Target Area: Replacement Parts





Distance between ① and ② is more than 100mm

NISSAN MOTOR Co., Ltd.

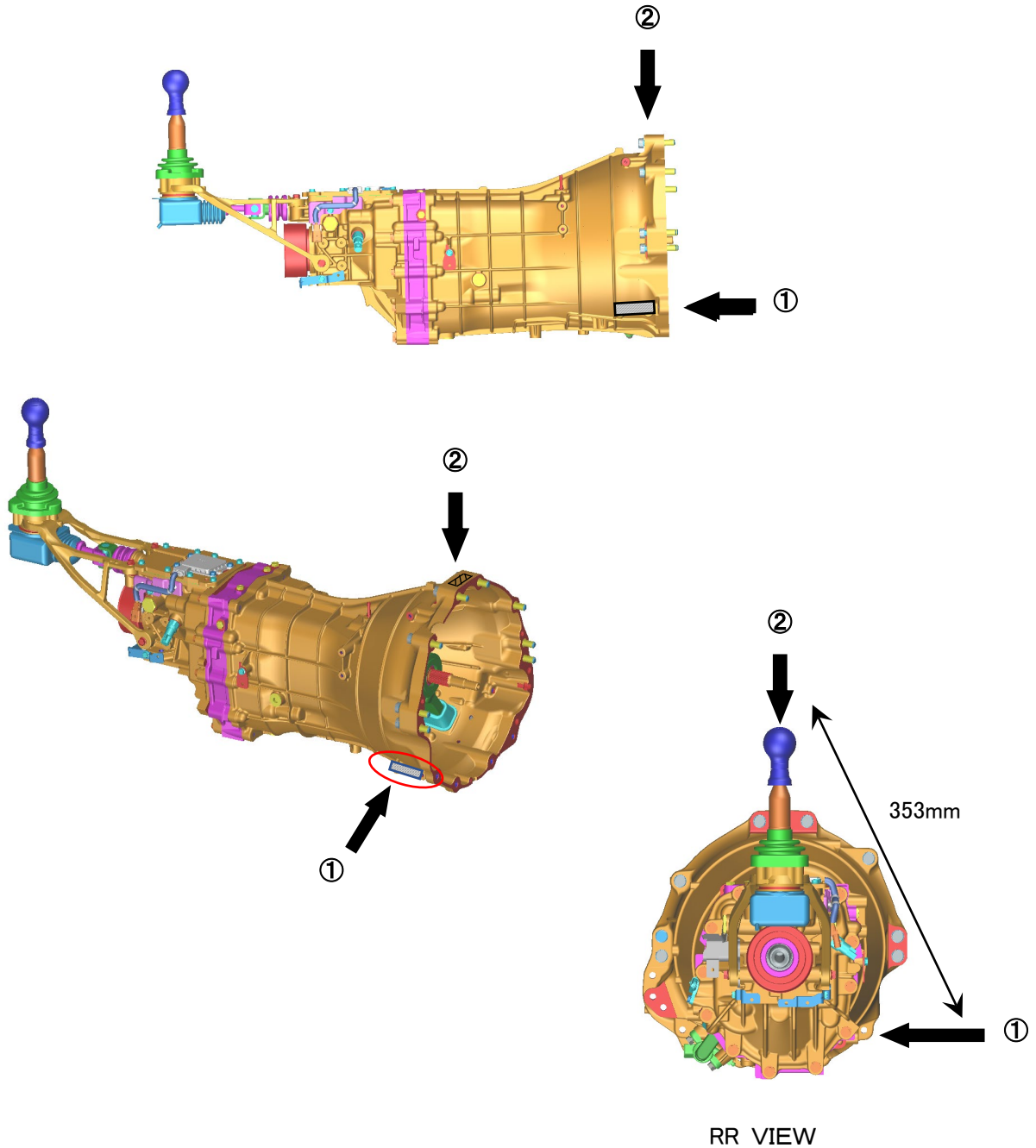
Drawing No.:2

Model: Nissan Z

① Target Area: Production Parts

Part: Transmission(6MT) ((a)(2))

② Target Area: Replacement Parts



Distance between ① and ② is more than 100mm

NISSAN MOTOR Co., Ltd.

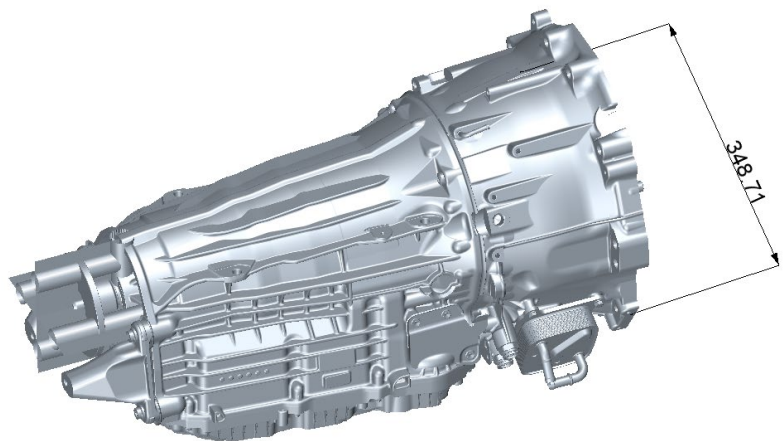
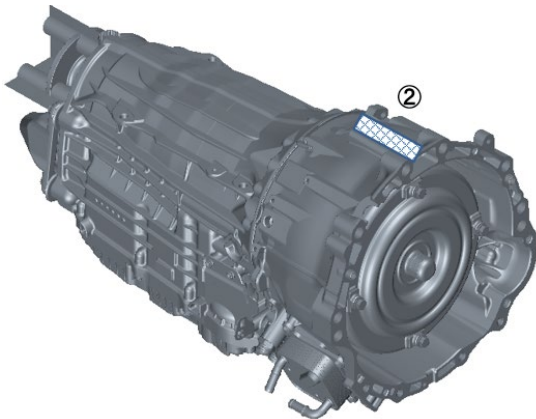
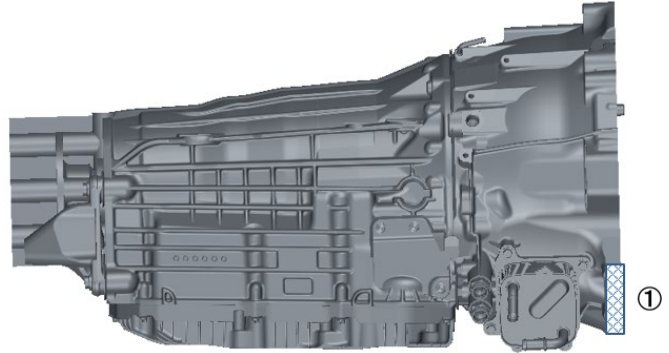
Model: Nissan Z

Part: Transmission(9AT) ((a)(2))

Drawing No.:3

① Target Area: Production Parts

② Target Area: Replacement Parts



Distance between ① and ② is more than 100mm

NISSAN MOTOR Co., Ltd.

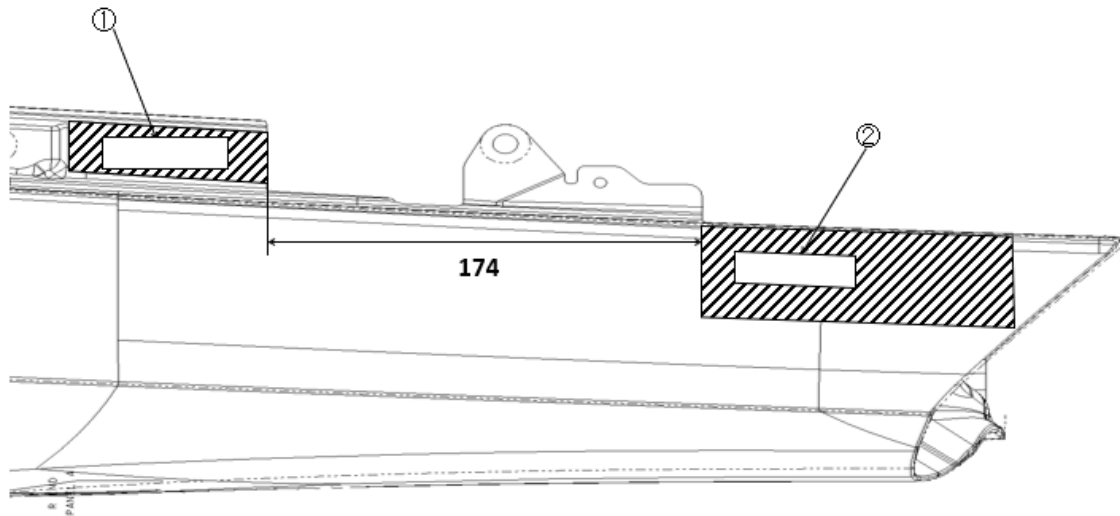
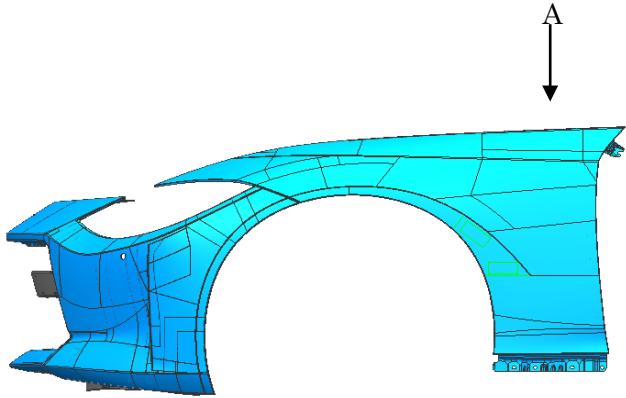
Drawing No.:4

Model: Nissan Z

① Target Area: Production Parts

Part: Right/Left front fender((a)(3)(4))

② Target Area: Replacement Parts



VIEW: A

Distance between ① and ② is more than 100mm

NISSAN MOTOR Co., Ltd.

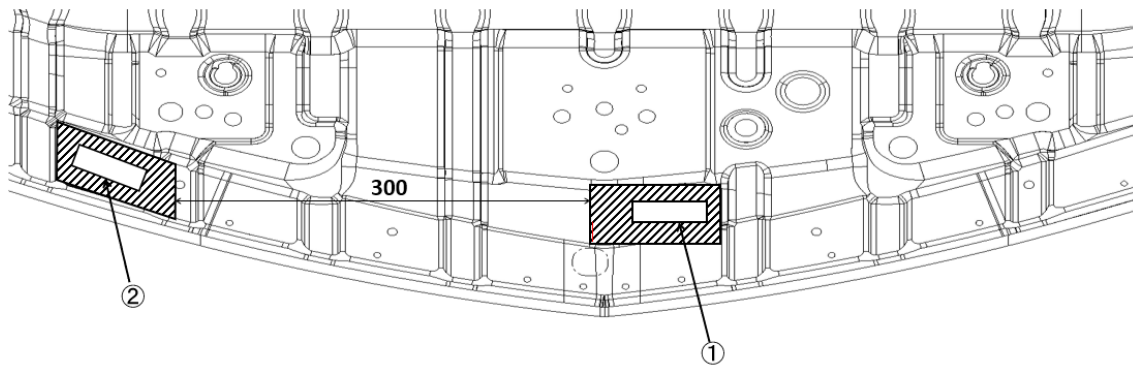
Drawing No.:5

Model: Nissan Z

① Target Area: Production Parts

Part: Hood ((a)(5))

② Target Area: Replacement Parts



HOOD  
BOTTOM VIEW

Distance between ① and ② is more than 100mm



NISSAN MOTOR Co., Ltd.

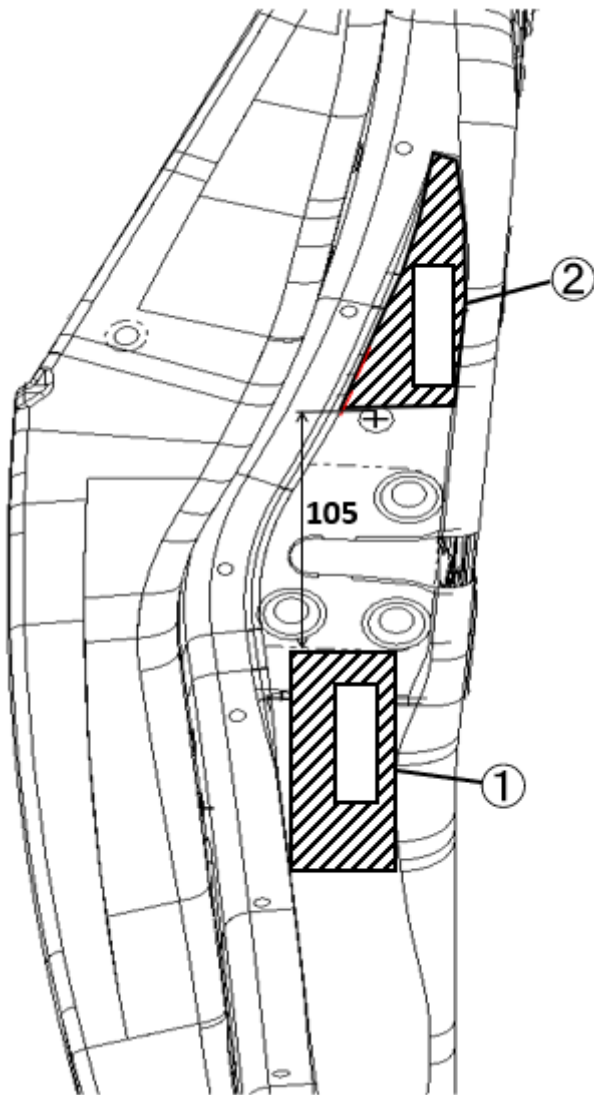
Drawing No.:6

Model: Nissan Z

① Target Area: Production Parts

Part: Right/Left front door ((a)(6)(7))

② Target Area: Replacement Parts



FRONT DOOR  
REAR VIEW

Distance between ① and ② is more than 100mm

NISSAN MOTOR Co., Ltd.

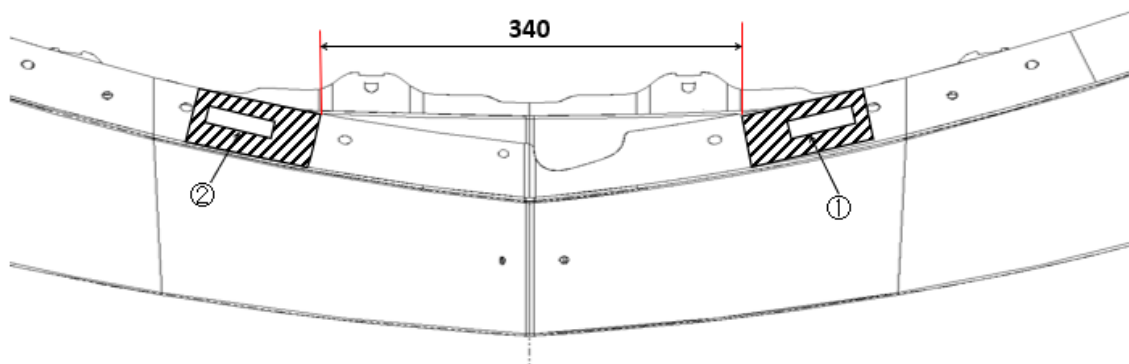
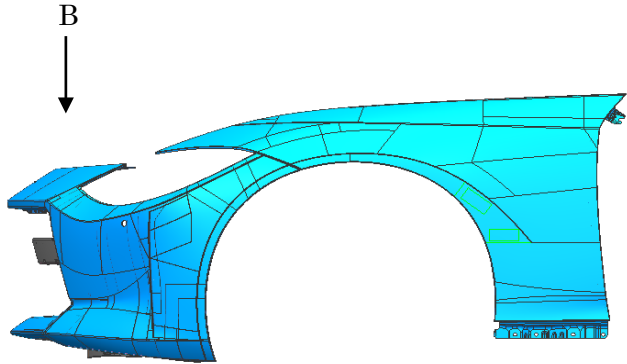
Drawing No.:7

Model: Nissan Z

① Target Area: Production Parts

Part: Front bumper ((a)(11))

② Target Area: Replacement Parts



VIEW: B

Distance between ① and ② is more than 100mm

NISSAN MOTOR Co., Ltd.

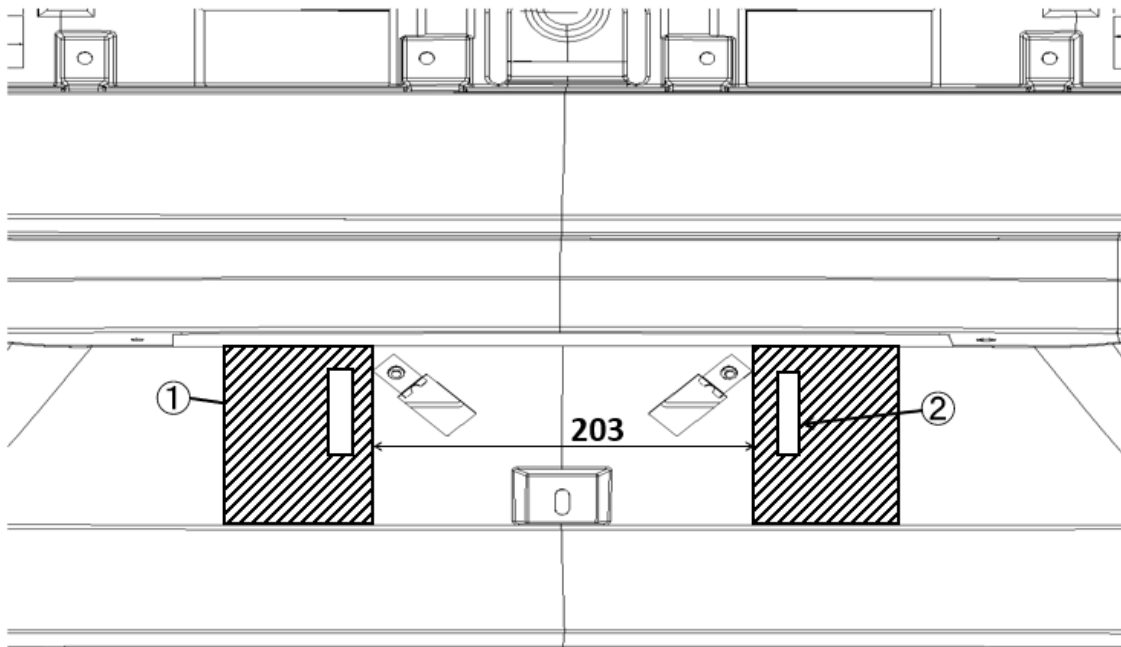
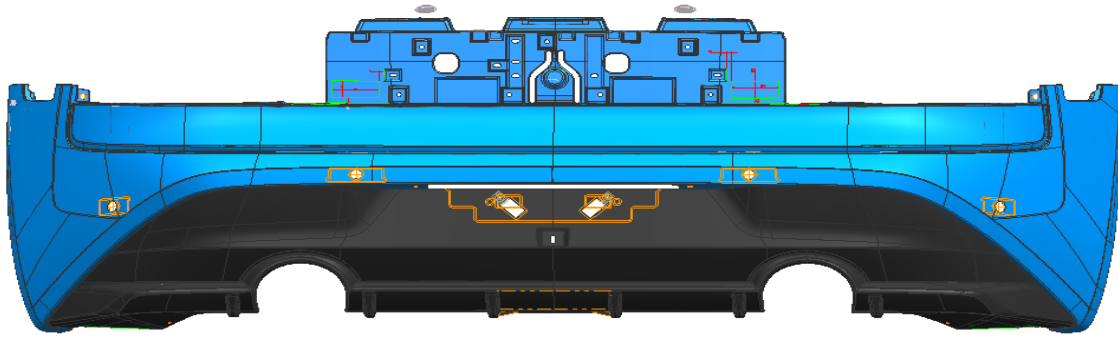
Drawing No.:8

Model: Nissan Z

① Target Area: Production Parts

Part: Rear bumper ((a)(12))

② Target Area: Replacement Parts



REAR BUMPER

REAR VIEW

Distance between ① and ② is more than 100mm

NISSAN MOTOR Co., Ltd.

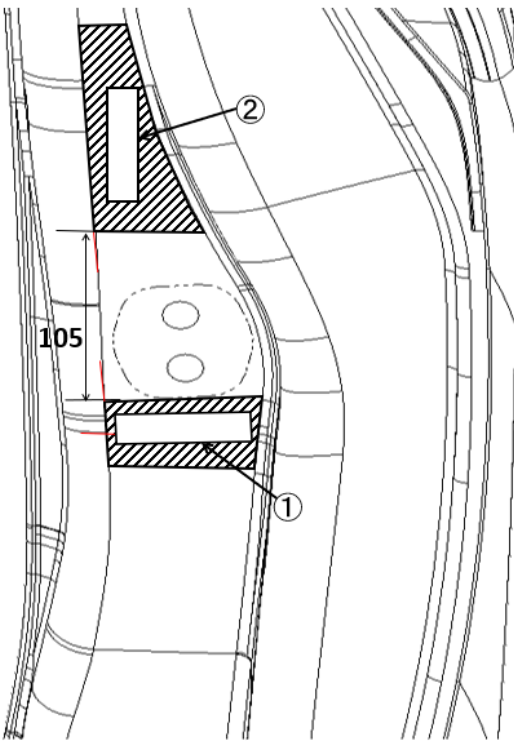
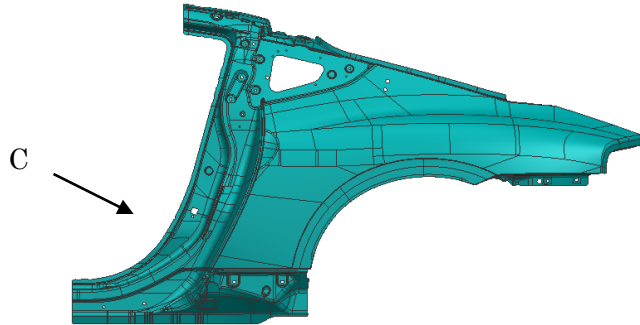
Drawing No.:9

Model: Nissan Z

① Target Area: Production Parts

Part: Right/Left rear quarter panel((a)(13)(14))

② Target Area: Replacement Parts



VIEW: C

Distance between ① and ② is more than 100mm

NISSAN MOTOR Co., Ltd.

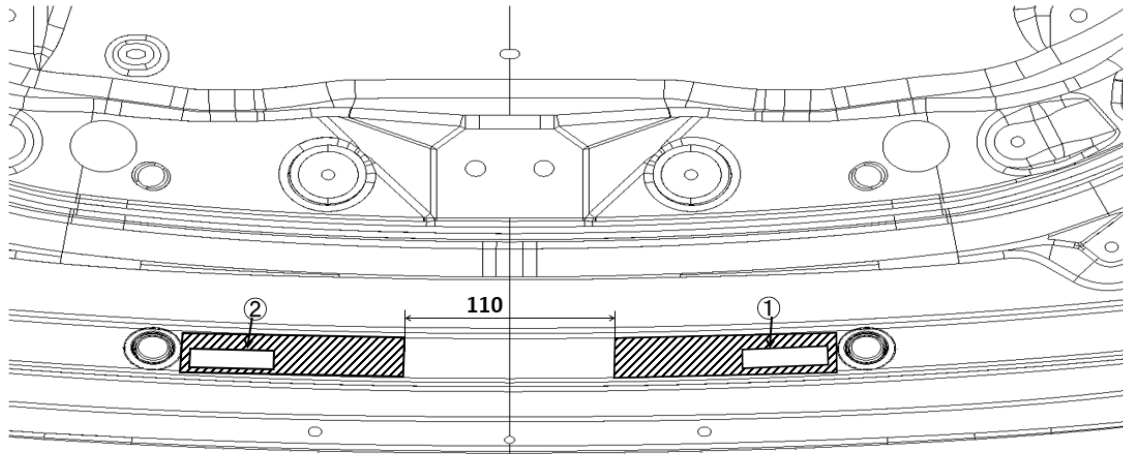
Drawing No.:10

Model: Nissan Z

③ Target Area: Production Parts

Part: Decklid ((a)(18))

④ Target Area: Replacement Parts



BACK DOOR  
BOTTOM VIEW

Distance between ① and ② is more than 100mm