

**NCAP-KAR-DR-20-03
NEW CAR ASSESSMENT PROGRAM (NCAP)
DYNAMIC ROLLOVER RESISTANCE TEST**

NISSAN MOTOR CO., LTD.

2021 NISSAN ROGUE FWD 5-DOOR COMPACT SUV

**PREPARED BY:
APPLUS IDIADA KARCO ENGINEERING, LLC.
9270 HOLLY ROAD
ADELANTO, CA 92301**



DECEMBER 10, 2020

FINAL REPORT

**PREPARED FOR:
U.S. DEPARTMENT OF TRANSPORTATION
NATIONAL HIGHWAY TRAFFIC SAFETY ADMINISTRATION
NEW CAR ASSESSMENT PROGRAM
MAIL CODE: NRM-110
1200 NEW JERSEY AVE, SE
WASHINGTON, D.C. 20590**

The United States Government assumes no liability for the contents of this report or use thereof. If trade or manufacturers' names or products are mentioned, it is only because they are considered essential to the object of the publication and should not be construed as an endorsement. The United States Government does not endorse products or manufacturers.

Applus+ IDIADA KARCO Engineering, LLC does not endorse or certify products of manufacturers. The manufacturer's name appears solely to identify the test article. Applus+ IDIADA KARCO Engineering, LLC assumes no liability for the report or use thereof. It is responsible for the facts and the accuracy of the data presented herein. This report does not constitute a standard, specification, or regulation.

Prepared By: Mr. Eduard Lucas, Project Engineer
Applus IDIADA KARCO Engineering, LLC.

Approved By: Mr. Bernat Ferrer, Program Manager
Applus IDIADA KARCO Engineering, LLC.

Date: December 10, 2020

TECHNICAL REPORT DOCUMENTATION PAGE

1. Report No. NCAP-KAR-DR-20-03	2. Government Accession No.	3. Recipient's Catalog No.	
4. Title and Subtitle Final Report of New Car Assessment Program Dynamic Rollover Resistance Maneuver (Fishhook) Test of a 2021 Nissan Rogue FWD 5-Door Compact SUV		5. Report Date December 10, 2020	
		6. Performing Organization Code KAR	
7. Authors Mr. Bernat Ferrer, Program Manager, Applus+ IDIADA KARCO Engineering Mr. Eduard Lucas, Project Engineer, Applus+ IDIADA KARCO Engineering		8. Performing Organization Report No. TR-P40373-01-NC	
9. Performing Organization Name and Address Applus IDIADA KARCO Engineering, LLC. 9270 Holly Rd. Adelanto, CA 92301		10. Work Unit No.	
		11. Contract or Grant No. 693JJ920D000011	
12. Sponsoring Agency Name and Address U. S. Department of Transportation National Highway Traffic Safety Administration New Car Assessment Program 1200 New Jersey Ave., SE Washington, D.C. 20590		13. Type of Report and Period Covered Final Test Report, December 4 - 10, 2020	
		14. Sponsoring Agency Code NRM-110	
15. Supplementary Notes			
16. Abstract An NCAP Dynamic Rollover Maneuver (Fishhook) Test was conducted on a 2021 Nissan Rogue FWD 5-Door Compact SUV by Applus+ IDIADA KARCO Engineering, LLC. on December 4, 2020. The vehicle did not experience two-wheel lift. The vehicle's steering angle at 0.3 g lateral acceleration at 50 mph was 25.8 degrees			
17. Key Words New Car Assessment Program (NCAP) NCAP Rollover Resistance Ratings Fishhook Test		18. Distribution Statement Copies of this report are available from: National Highway Traffic Safety Admin. Technical Reference Division 1200 New Jersey Ave., SE Washington, DC 20590	
19. Security Classification of this report UNCLASSIFIED	20. Security Classification of this page UNCLASSIFIED	21. No. of Pages 53	22. Price

TABLE OF CONTENTS

<u>Section</u>		<u>Page</u>
I	INTRODUCTION	1
II	VEHICLE PREPARATION	2
III	TEST PROCEDURES	9
IV	RESULTS	13
<u>Appendix</u>		<u>Page</u>
A	Photographs	A
B	Test Run Log	B
C	Slowly Increasing Steer Test Worksheet	C
D	Time History Plots	D

LIST OF FIGURES

<u>Figure</u>		<u>Page</u>
1	Nominal Position of Video Cameras for Fishhook Tests	8
2	Vehicle Dynamics Area at Honda Proving Center	12

LIST OF TABLES

<u>Table</u>		<u>Page</u>
1	Test Vehicle Data	3
2	Tire Information	4
3	Vehicle Loading	4
4	Weight of In-Cab Test Equipment	6
5	Sensor Specifications	7
6	Lateral Surface Friction	10
7	Handwheel Angles	10
8	Weather Conditions	11

SECTION I

INTRODUCTION

The National Highway Traffic Safety Administration (NHTSA) has engaged Applus+ IDIADA KARCO Engineering, LLC to conduct dynamic rollover testing and gather data from that testing as part of NHTSA's New Car Assessment Program (NCAP).

The purpose of the testing reported herein was to determine if a 2021 Nissan Rogue FWD 5-Door Compact SUV would experience tip-up, defined as simultaneous two-wheel lift of two inches or more at an entry speed of 50 mph or less in the Dynamic Rollover Test Procedure developed by NHTSA. This procedure may be found at www.regulations.gov, docket item NHTSA-2006-26555-0136.

The testing reported herein was accomplished under contract 693JJ920D000011.

SECTION II

VEHICLE PREPARATION

A. TEST VEHICLE

The test vehicle was new or in as-new condition, meaning the vehicle had been driven no more than 500 miles prior to the start of dynamic rollover testing. It was acquired through a commercial rental/leasing company. Details of the test vehicle are given in Table 1.

B. TIRES

All tires used were new, and of the same make, model, size, and DOT specification of those installed on the vehicle when purchased new. Tire inflation pressures were in accordance with the recommendations indicated on each vehicle's identification placard. To further reduce the possibility of tire debanding, the tires were mounted to the rims without the use of tire mounting lubricant. Tire specifications are listed in Table 2.

C. VEHICLE LOADING

The multi-passenger load, described in the Fishhook Procedure, was used for all tests. The load and positioning of the load in the vehicle are listed in Table 3.

In addition to water dummies, the loading included instrumentation, a steering machine, and outriggers. Test vehicle bumper assemblies were removed for outrigger installation. The reduction in vehicle weight due to the removal of the bumpers was offset by the additional weight of the outriggers and their mounting system. The outrigger system typically outweighs the bumper assemblies.

Table 1. Test Vehicle Data

General Data					
Model year, make, model	2021 Nissan Rogue				
VIN	5N1AT3AA1MC68xxxx				
Body style	Compact SUV				
Number of doors	5				
Trim level	S				
Seating positions	Front:	2 nd row	3 rd row	4 th row	5 th row
	2	3			
Electronic stability control	Yes				
4-Wheel ABS (Yes/No)	Yes				
Power steering (Yes/No)	Yes				
Major optional equipment	-				
Odometer at start of testing	10 miles				
Drivetrain					
Engine cylinder arrangement	Transversal 4				
Engine displacement	2.5 L				
Transmission type	Automatic				
Drive arrangement	FWD				
Chassis					
Track width	F: 62.2 in (1580 mm), R: 62.3 in (1590 mm)				
Wheelbase	106.7 in (2710 mm)				
Curb weight	3305 lb (1499.0 kg)				
Certification Data from Vehicle's Label					
Vehicle manufactured by	Nissan Motor Co., LTD.				
Date of manufacture	11/20				
GVWR	4486 lb (2035 kg)				
GAWR Front	2359 lb (1070 kg)				
GAWR Rear	2238 lb (1015 kg)				

Table 2. Tire Information

Tire Manufacturer	Bridgestone
Tire Model	Alenza
Tire Size	Front: 235/65R17 Rear: 235/65R17
Load rating	Front: 104 Rear: 104
Speed rating	Front: H Rear: H
Treadwear grade	Front: 500 Rear: 500
Traction grade	Front: A Rear: A
Temperature grade	Front: A Rear: A
Location of "Recommended Tire Pressure" label	Driver's door jamb
Recommended cold tire pressure	Front: 36 psi, (250 kPa) Rear: 33 psi, (230 kPa)
DOT code (8 first digits)	Front: 1VN 81ALA1 Rear: 1VN 81ALA1

Table 3. Vehicle Loading

Water dummy and other loading	Multi-Passenger Configuration 3 water dummies in second row.
Water dummy weight	525.1 lb (238.2 kg)
Fuel level	Full
Weight as Tested	
Left front	1167 lb (529.5 kg)
Right front	1177 lb (534.0 kg)
Left rear	1090 lb (494.5 kg)
Right rear	983 lb (446.0 kg)
Total weight	4417 lb (2004.0 kg)

D. STEERING CONTROLLER

Precise steering control is accomplished using a steering machine designed and constructed by ABD. It can provide up to 45 ft-lb torque and at rates over 1000 deg/sec. The integrated angle encoder has an unlimited range with a resolution of 0.25 degrees and an accuracy of ± 0.25 degrees. The steering motor is controlled by RC8 software from ABD, which also acts as the data acquisition system.

E. REAL-TIME CONTROLLER AND DATA ACQUISITION

Data acquisition is achieved using a MOSES Meas X which also serves as the real-time system for the steering controller. Data from the OXTS, including Longitudinal, Lateral, and Vertical Acceleration, Roll, Yaw, and Pitch Rate, Forward and Lateral Velocity, Roll and Pitch Angle, are sent over Ethernet to the MOSES MeasX. The Oxford IMUs are calibrated per the manufacturer's recommended schedule (Table 5).

Two video cameras were used to record the Fishhook runs. They were positioned nominally as shown in Figure 1. The recorded video was reviewed after the Fishhook runs to check for any two-wheel lift. If any two-wheel lift was observed, four infrared distance measuring sensors for measurement of wheel lift (two sensors at each wheel) were then mounted for use in subsequent confirmation Fishhook tests.

F. EQUIPMENT WEIGHT

Table 4 lists the equipment and associated weights outlined in the NHTSA Laboratory Test Procedure for Dynamic Rollover and the equipment at Applus+ IDIADA KARCO Engineering, LLC used for this specific test program.

Table 4. Weight of In-Cab Test Equipment

Equipment	Location	Equipment Weight (lb)	
		NHTSA*	IDIADA
Data Acquisition System	Front passenger seat	58	35
GPS Inertial unit	At the chassis in a flat and rigid surface		7
Steering Machine	Handwheel	31	51
Steering Machine Electronics Box	Passenger row foot well behind the front passenger seat. If vehicle does not have a rear passenger row foot well, the Electronics Box should be placed in the front passenger seat footwell.	39	39
	Total	128	132

* Table A.1 from US DOT NHTSA - Laboratory Test Procedure for Dynamic Rollover - The Fishhook Maneuver Test Procedure - New Car Assessment Program (NCAP) - March 2013

G. SENSORS

A list of the sensors is given in Table 5.

H. OTHER VEHICLE PREPARATION

In addition to installation and preparation discussed above, the test vehicle was prepared as follows:

- Front and rear bumpers were removed.
- Outrigger mounts were installed in the bumper locations and titanium outriggers were fastened to these mounts.
- Airbags were removed or otherwise disabled.

Photographs of the vehicle tested are given in Appendix A.

Table 5. Sensor Specifications

Type	Measured Variable	Sensor	Range	Resolution	Accuracy	Specifics	Serial Number	Calibration	Unit
<i>Multi-Axis Inertial Sensing System</i> <i>Distance Measuring System</i> <i>Radar Speed Sensor</i> <i>Data Flag (Roll Rate Flag)</i>	Longitudinal speed Lateral speed Longitudinal acc. Lateral acc. Roll angle Pitch angle Yaw angle Roll rate Pitch rate Yaw rate	GPS inertial unit	- - ±100 ±100 ±100 ±100 ±100 ±100 ±100 ±100	0.01 %/s 0.01 m/s ²	±0.1 ±0.1 ±0.1 ±0.1 ±0.05 ±0.05 ±0.1 ±0.1 ±0.1	OXTS (RT)	1611	By: IDIADA Date: 6/16/2020 Due: 6/16/2022	km/h km/h m/s ² ° ° ° %/s %/s %/s
<i>Angle Encoder¹</i> <i>Data Flag (Handwheel Command Flag)</i>	Steering angle Steering torque	Steering wheel robot	>1000 60	0.25 deg	±0.20 ±0.25	ABD	769/17	By: IDIADA Date: 8/01/2019 Due: 8/01/2021	° Nm
<i>Infrared Distance Measuring System</i>	Tire wheel lift	Height sensors	300-700	0.01 mm	±0.8	OPTImess	OMS 4140-3098 OMS 4140-4506 OMS 4140-4508 OMS 4140-4509	By: IDIADA Date: 7/7/2020 Due: 7/7/2021	mm
<i>Load Cell</i>	Brake Pedal Force	Load Cell	±600	-	±0.5	Novatech	48305	By: IDIADA Date: 3/27/2020 Due: 3/27/2021	N
<i>Acquisition system</i>	-	Acquisition system	200	-	-	IDIADA Moses MEAS X	180749	By: IDIADA Date: 05/21/2020 Due: 05/21/2022	-

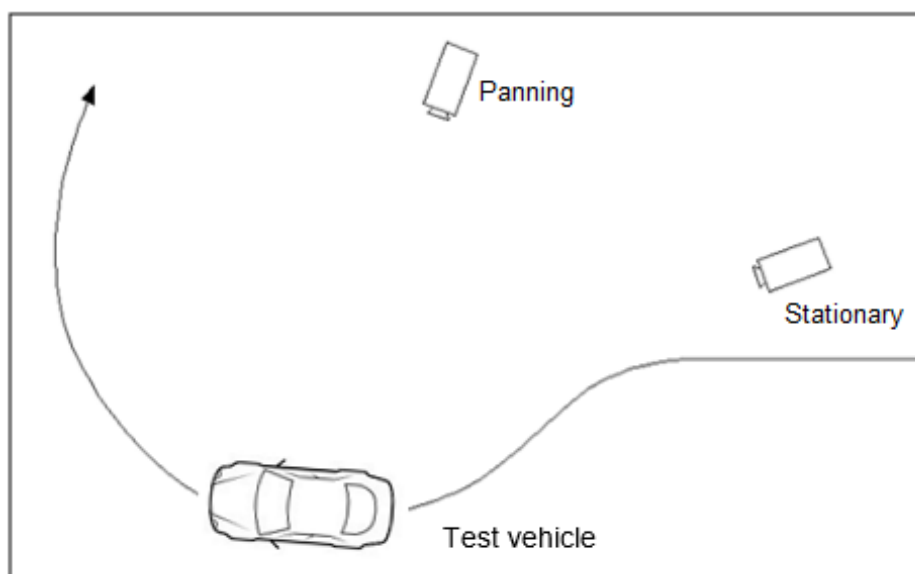


Figure 1. Nominal Position of Video Cameras for Fishhook Tests

SECTION III

TEST PROCEDURES

A. TEST PROCEDURE OVERVIEW

This test was conducted in accordance with NHTSA's NCAP Rollover Resistance Test Procedure (Fishhook) as described in the Federal Register (68 FR 59250). Detailed descriptions of the test procedure, pass/fail criteria, and data acquisition specifications may be found at docket NHTSA-2001-9663.

There are two major components of the test procedure, the Slowly Increasing Steer (SIS) pre-test and the Fishhook test.

The Slowly Increasing Steer (SIS) maneuver was used to characterize the steady state lateral dynamics of each vehicle, and is based on the "Constant Speed, Variable Steer" test defined in SAE J266. The maneuver is used to determine the handwheel angle that produces a lateral acceleration of 0.3 g at 50 mph. This handwheel angle is then used to determine the magnitude of steering to be used for the NHTSA Fishhook maneuver.

SIS tests were performed at a constant speed of 50 mph. Handwheel angle was input at a rate of 13.5 deg/sec, from 0 to an angle that provided at least 0.55 g. Three tests were conducted in each direction, and the data for the six runs were averaged to obtain the handwheel angle that produced 0.3 g at 50 mph.

The Fishhook test is a programmed steering maneuver that is implemented via the steering controller. The vehicle was initially steered in one direction and then the steering was reversed. The timing, magnitude and rate of the steering were prescribed by the Fishhook Procedure.

To begin the maneuver, the vehicle was driven in a straight line at a speed slightly greater than the desired entrance speed. The driver then released the throttle. When the vehicle was at the target speed, the steering controller automatically initiated the steering maneuver. Following completion of the steering reversal, the handwheel position was maintained for 3 seconds, and then returned to zero angle in 2 seconds.

The tests were conducted in both left-right and right-left directions. The “Default” test series used a handwheel angle equal to 6.5 times the handwheel angle that produced 0.3 g at 50 mph in the SIS tests, and initial vehicle speeds beginning at 35 mph and concluding up to 50 mph (if no two-wheel lift occurs). Supplemental tests were also done, as specified in the Fishhook Procedure.

A. TEST CONDITIONS

1. Test Surface

The tests were conducted on the Vehicle Dynamics Area (VDA) at HONDA Proving Center facility, located in Cantil, California, on 12/4/2020. The VDA has a smooth, flat (slope less than 0.5% throughout) asphaltic concrete surface. Its dimensions are as shown in Figure 2. The test was accomplished using an ASTM E1136 tire with an inflation pressure of 35 (± 0.5) psi at a test speed of 40 (± 0.5) mph. The net slip angle of the test tire for each test run was 7.5 deg. The surface friction measurement results are shown in Table 6.

Table 6. Lateral Surface Friction

Date of surface friction measurements	12/4/2020
Average lateral friction coefficient	0.92

2. Fishhook Handwheel Angles

The 0.3 g handwheel angle obtained from the SIS tests and the handwheel angles used in the Fishhook tests are shown in Table 7.

Table 7. Handwheel Angles

0.3 g handwheel angle (from SIS tests at 50 mph)	25.8°
5.5 scalar handwheel angle for Fishhook Test	141.9°
6.5 scalar handwheel angle for Fishhook Test	167.7°

3. Weather Conditions

The weather conditions, recorded at the end of testing, are shown in Table 8.

Table 8. Weather Conditions

Ambient temperature	57.3 °F (14.1 °C)
Wind Speed	2.9 mph (1.3 m/s)
Wind Direction	SSE

SECTION IV

RESULTS

There is Appendix A with the photographic documentation. The test run log is given in Appendix B. A summary of the Slowly Increasing Steer Test is given in Appendix C. Appendix D contains time history plots for the 50 mph runs and any runs which resulted in two-wheel lift. For the 2021 Nissan Rogue FWD 5-Door Compact SUV, there was no two-wheel lift at any test condition.

APPENDIX A
PHOTOGRAPHS

LIST OF FIGURES

Figure		Page
Figure A1	Monroney Label	A-1
Figure A2	Right Front View, Test Vehicle As-Delivered	A-2
Figure A3	Left Rear View, Test Vehicle As-Delivered	A-3
Figure A4	Left Front View, Test Vehicle in Test Condition	A-4
Figure A5	Right Rear View, Test Vehicle in Test Condition	A-5
Figure A6	Vehicle's Tire Information Placard	A-6
Figure A7	Vehicle's Certification Label	A-7
Figure A8	Instrumentation in Test Vehicle	A-8
Figure A9	Steering Controller and Computer	A-9
Figure A10	Ballast Condition	A-10



Figure A2. Right Front View, Test Vehicle As-Delivered



Figure A3. Left Rear View, Test Vehicle As-Delivered



Figure A4. Left Front View, Test Vehicle in Test Condition



Figure A5. Right Rear View, Test Vehicle in Test Condition

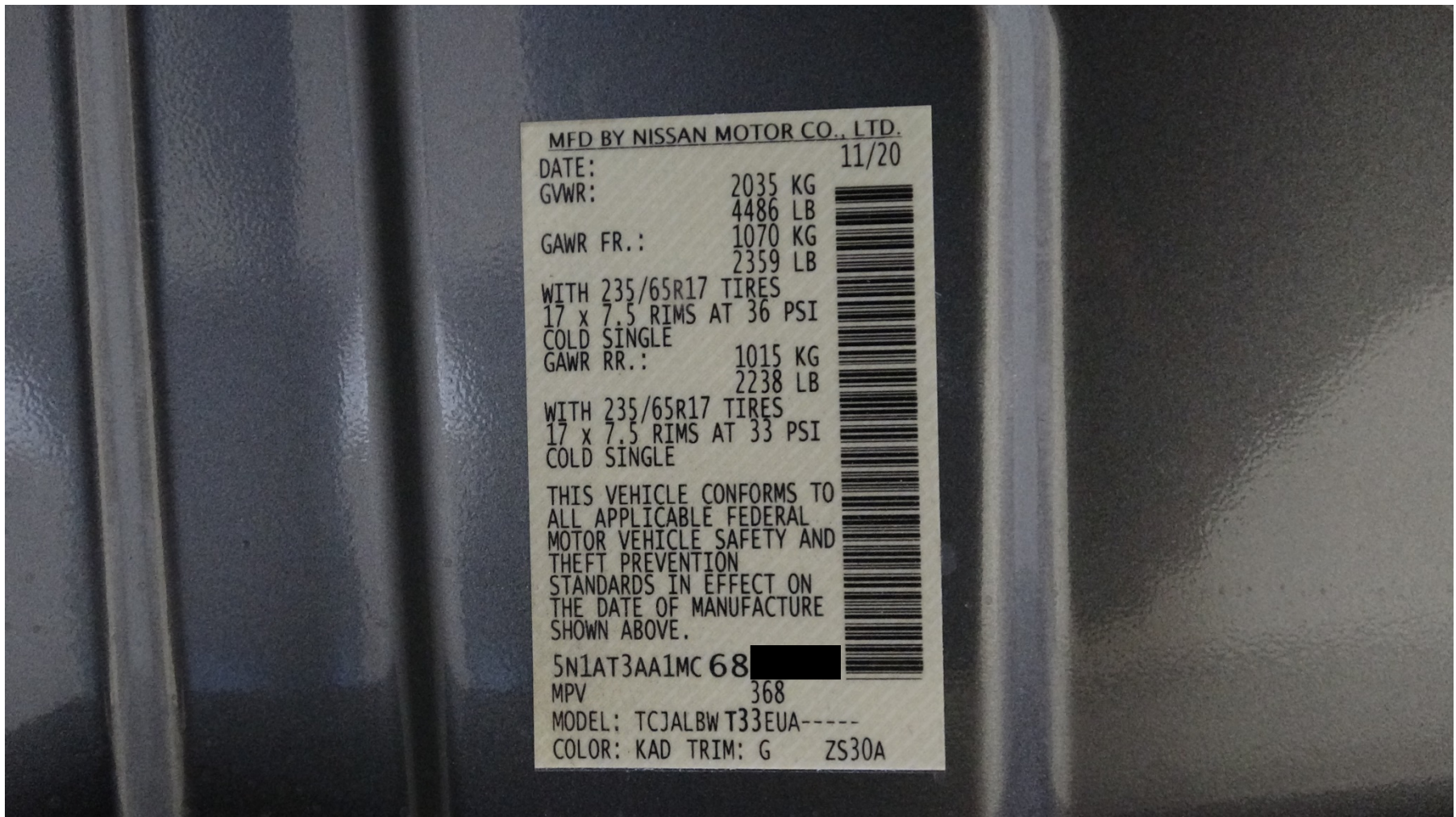



Figure A6. Vehicle's Certification Label



TIRE AND LOADING INFORMATION
RENSEIGNEMENTS SUR LES PNEUS ET LE CHARGEMENT

SEATING CAPACITY	TOTAL	5	FRONT AVANT	2
NOMBRE DE PLACES	TOTAL		REAR ARRIÈRE	3

The combined weight of occupants and cargo should never exceed **408 kg** or **900 lbs.**
 Le poids total des occupants et du chargement ne doit jamais dépasser **408 kg** ou **900 lb.**

TIRE PNEU	SIZE DIMENSIONS	COLD TIRE PRESSURE PRESSION DES PNEUS À FROID
FRONT AVANT	235/65R17 104H	250kPa, 36PSI
REAR ARRIÈRE	235/65R17 104H	230kPa, 33PSI
SPARE DE SECOURS	T155/80D17 101M	420kPa, 60PSI

SEE OWNER'S MANUAL FOR ADDITIONAL INFORMATION
 VOIR LE MANUEL DE L'USAGER POUR PLUS DE RENSEIGNEMENTS



6RR4B

Figure A7. Vehicle's Tire Information Placard



Figure A8. Instrumentation in Test Vehicle



Figure A9. Steering Controller and Computer



Figure A10. Ballast Condition

APPENDIX B
TEST RUN LOG

Run Number	Test Type	Speed (mph)	Handwheel Angle (deg)	Dir. of First Steer	2 Wheel Lift	Notes
1	Tire Warm-Up	35	30.0	Left	N/A	Resulted in ay = 0.24g
2	"	"	51.8	"	"	Resulted in ay = 0.39g
3	"	"	"	"	"	
4	"	"	"	"	"	
5	2x SWA last cycle	"	103.6	"	"	2x SWA last cycle
6	Static	0	0	N/A	N/A	
7	Steady State	50	0	N/A	"	
8	Slowly Increasing Steer	50	30.0	Left	N/A	
9	"	"	44.5	Left	"	HW angle at 0.3 g = -26.5
10	"	"	"	Left	"	HW angle at 0.3 g = -26.5
11	"	"	"	Left	"	HW angle at 0.3 g = -26.2
12	"	"	"	Right	"	HW angle at 0.3 g = 25.3
13	"	"	"	Right	"	HW angle at 0.3 g = 25.1
14	"	"	"	Right	"	HW angle at 0.3 g = 25.2
						Average = 25.8
15	Fishhook 6.5 Scalar	35	167.7	Left	No	
16	"	40	"	"	"	
17	"	45	"	"	"	
18	"	47.5	"	"	"	
19	"	50	"	"	"	
20	Fishhook 5.5 Scalar	45	141.9	Left	No	
21	"	47.5	"	"	"	
22	"	50	"	"	"	

Run Number	Test Type	Speed (mph)	Handwheel Angle (deg)	Dir. of First Steer	2 Wheel Lift	Notes
23	Fishhook 6.5 Scalar	35	167.7	Right	No	
24	"	40	"	"	"	
25	"	45	"	"	"	
26	"	47.5	"	"	"	
27	"	50	"	"	"	
28	Fishhook 5.5 Scalar	45	141.9	Right	No	
29	"	47.5	"	"	"	
30	"	50	"	"	"	

APPENDIX C
SLOWLY INCREASING STEER TEST WORKSHEET

2021 Nissan Rogue FWD 5-Door Compact SUV, Multi-Passenger Configuration,
Test Date: 12/4/2020



Slowly Increasing Steer



Vehicle: 2021 Nissan Rogue
Test Date: 4/12/2020
Analysis Date: 4/12/2020
Analysed by: EL
Executed by: OG
Weight Condition: Test Condition

Test Track: Dynamic Platform
Test Speed: 50 mph

Run	Dir of Steer	Start speed [mph]	End speed [mph]	Speed red [%]	Index of ay	HW angle [deg] at 0.3g	ay [g] 0.3g index	6.5x HW angle [deg]	Ramp time [sec] at 6.5x	5.5x HW angle [deg]	Ramp time [sec] at 5.5x	R2	Zero Begin index	Zero End index
SIS000	L	49.4	-0.1	100.2	998	-26.5	-0.300	-172.3	-0.2393	-145.8	-0.2025	0.9977	357	557
SIS001	L	49.8	0.2	99.7	996	-26.5	-0.300	-172.4	-0.2395	-145.9	-0.2027	0.9984	358	558
SIS002	L	50.1	-0.1	100.1	988	-26.3	-0.300	-170.8	-0.2373	-144.5	-0.2008	0.9959	353	553
SIS003	R	49.7	0.4	99.1	978	25.3	0.300	164.3	0.2282	139.0	0.1931	0.9968	338	538
SIS004	R	49.5	0.5	99.1	986	25.2	0.300	163.5	0.2271	138.3	0.1921	0.9970	344	544
SIS005	R	49.7	0.4	99.2	987	25.1	0.300	163.5	0.2270	138.3	0.1921	0.9967	346	546

Mean: 25.8

Steering Controller Input values

Scalar 6.5 values:

Initial HW angle: 167.7 deg

Reversal HW angle: -167.7 deg

Scalar 5.5 values:

Initial HW angle: 141.9 deg

Reversal HW angle: -141.9 deg

APPENDIX D
TIME HISTORY PLOTS

LIST OF FIGURES

Figure		Page
Figure D1	Steering Machine Operation Time History Plots for Default Test Series, L-R, 50 mph	D-1
Figure D2	Steering Machine Operation Time History Plots for Default Test Series, L-R, 50 mph	D-2
Figure D3	Yaw Rate, Roll Rate, and Lateral Acceleration Time History Plots for Default Test Series, L-R, 50 mph	D-3
Figure D4	Pitch Rate and Longitudinal Acceleration Time History Plots for Default Test Series, L-R, 50 mph	D-4
Figure D5	Vehicle Speed, Handwheel Angle, and Roll Angle Time History Plots for Default Test Series, R-L, 50 mph	D-5
Figure D6	Steering Machine Operation Time History Plots for Default Test Series, R-L, 50 mph	D-6
Figure D7	Yaw Rate, Roll Rate, and Lateral Acceleration Time History Plots for Default Test Series, R-L, 50 mph	D-7
Figure D8	Pitch Rate and Longitudinal Acceleration Time History Plots for Default Test Series, R-L, 50 mph	D-8
Figure D9	Vehicle Speed, Handwheel Angle, and Roll Angle Time History Plots for Supplemental 2 Test Series, L-R, 50 mph	D-9
Figure D10	Steering Machine Operation Time History Plots for Supplemental 2 Test Series, L-R, 50 mph	D-10
Figure D11	Yaw Rate, Roll Rate, and Lateral Acceleration Time History Plots for Supplemental 2 Test Series, L-R, 50 mph	D-11
Figure D12	Pitch Rate and Longitudinal Acceleration Time History Plots for Supplemental 2 Test Series, L-R, 50 mph	D-12
Figure D13	Vehicle Speed, Handwheel Angle, and Roll Angle Time History Plots for Supplemental 2 Test Series, R-L, 50 mph	D-13
Figure D14	Steering Machine Operation Time History Plots for Supplemental 2 Test Series, R-L, 50 mph	D-14
Figure D15	Yaw Rate, Roll Rate, and Lateral Acceleration Time History Plots for Supplemental 2 Test Series, R-L, 50 mph	D-15
Figure D16	Pitch Rate and Longitudinal Acceleration Time History Plots for Supplemental 2 Test Series, R-L, 50 mph	D-16

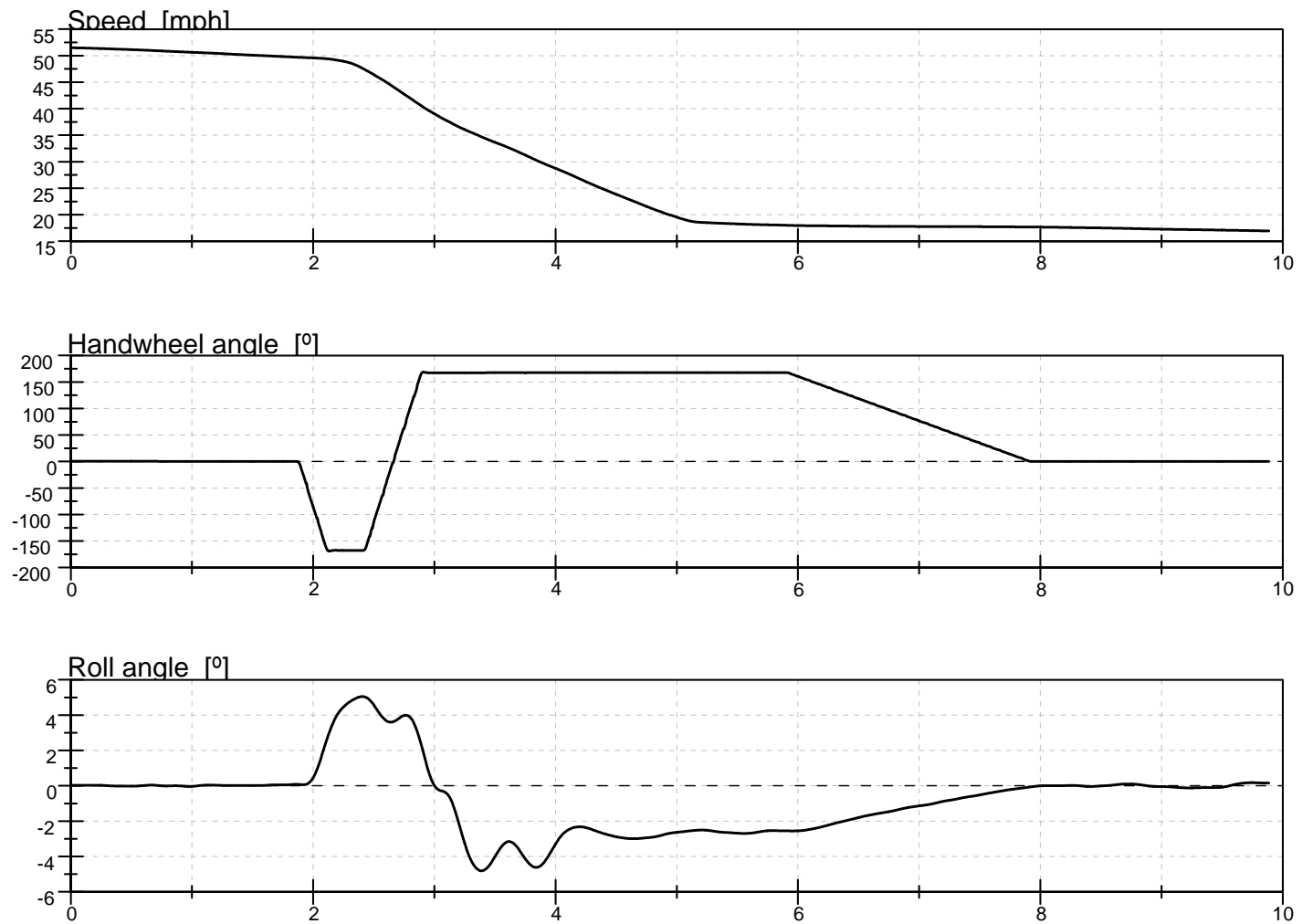


Figure D1. Vehicle Speed, Handwheel Angle, and Roll Angle Time History Plots for Default Test Series, L-R, 50 mph

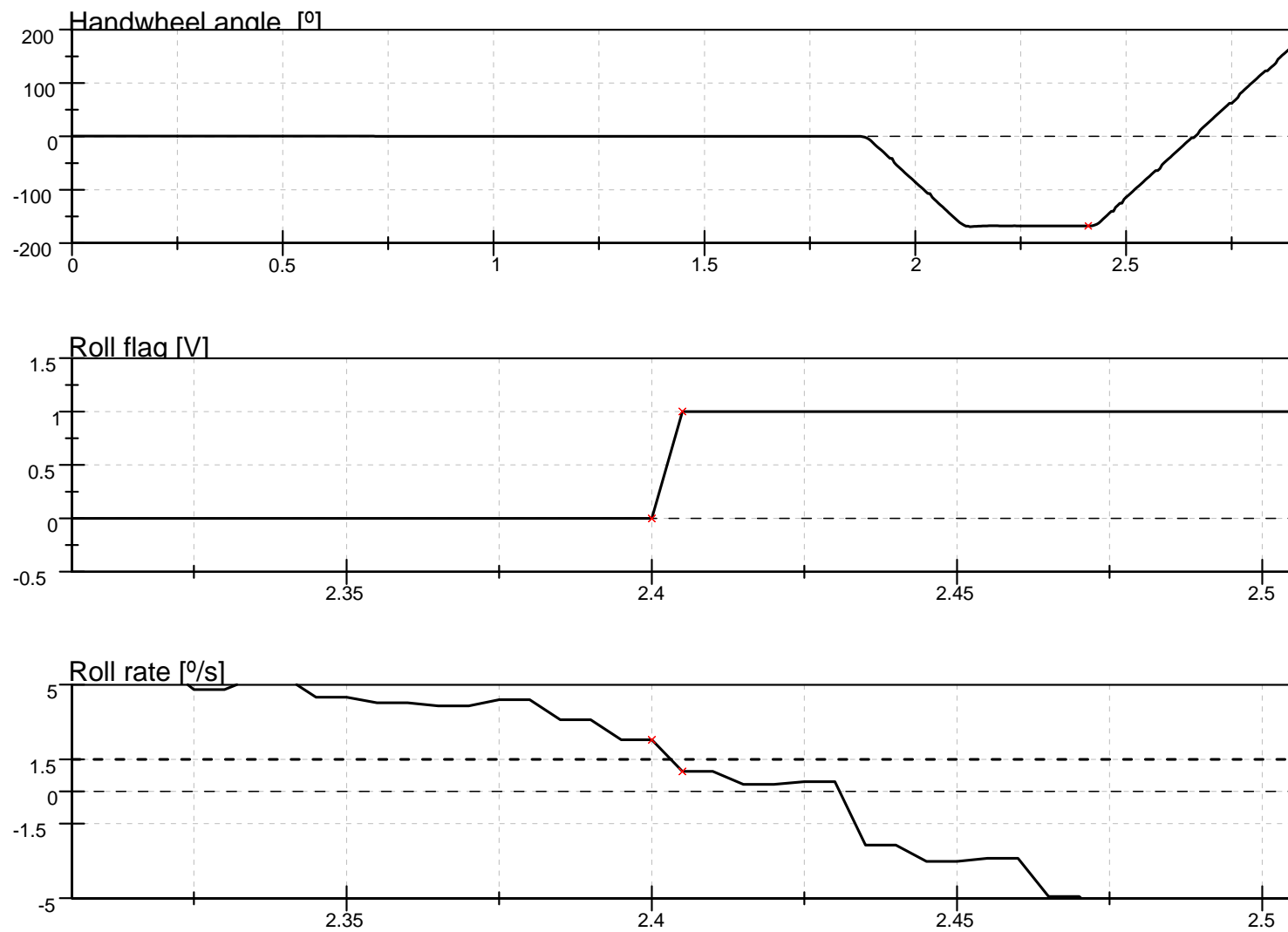


Figure D2. Steering Machine Operation Time History Plots for Default Test Series, L-R, 50 mph

FILENAME: FH003

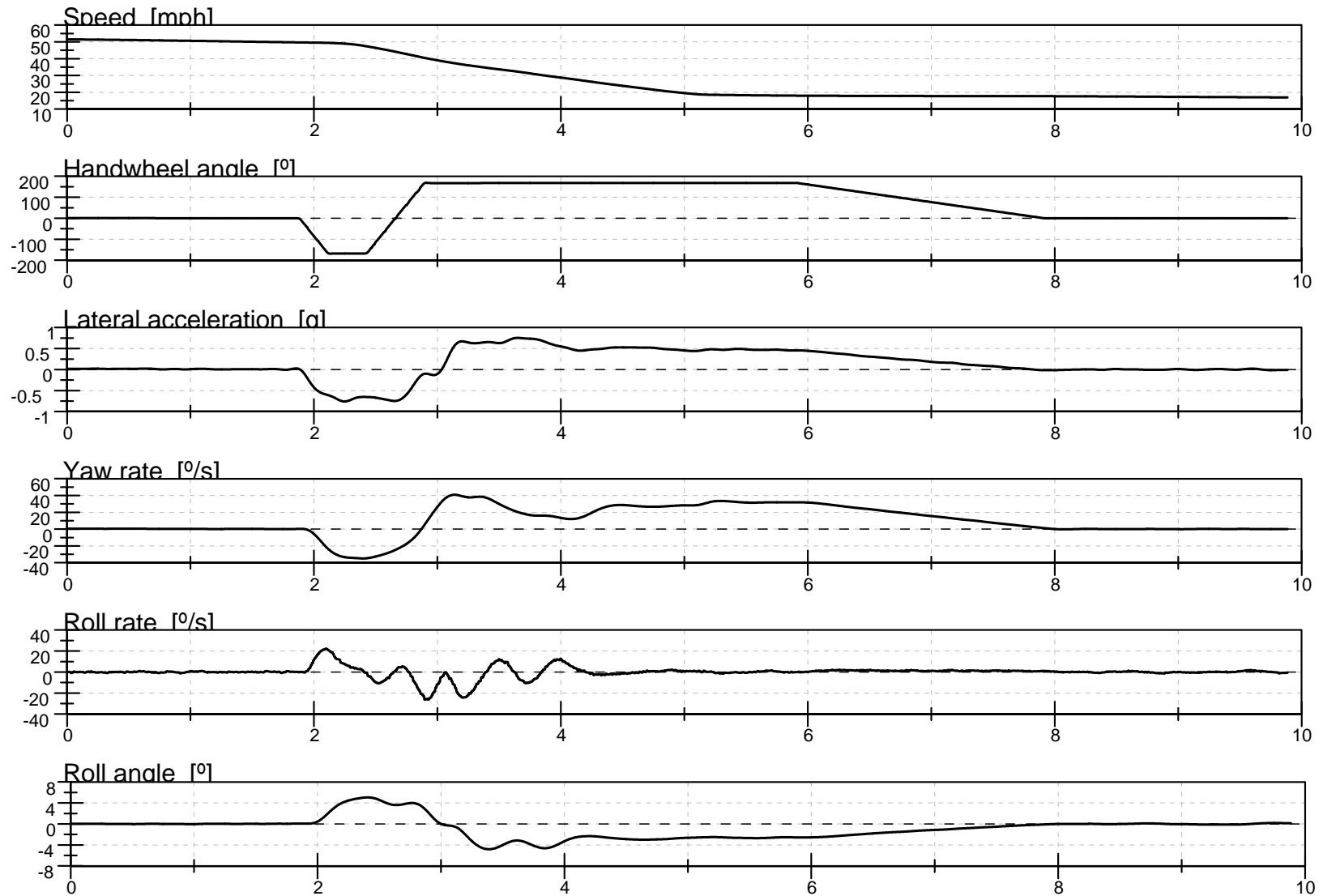


Figure D3. Yaw Rate, Roll Rate, and Lateral Acceleration Time History Plots For Default Test Series, L-R, 50 mph

FILENAME: FH003

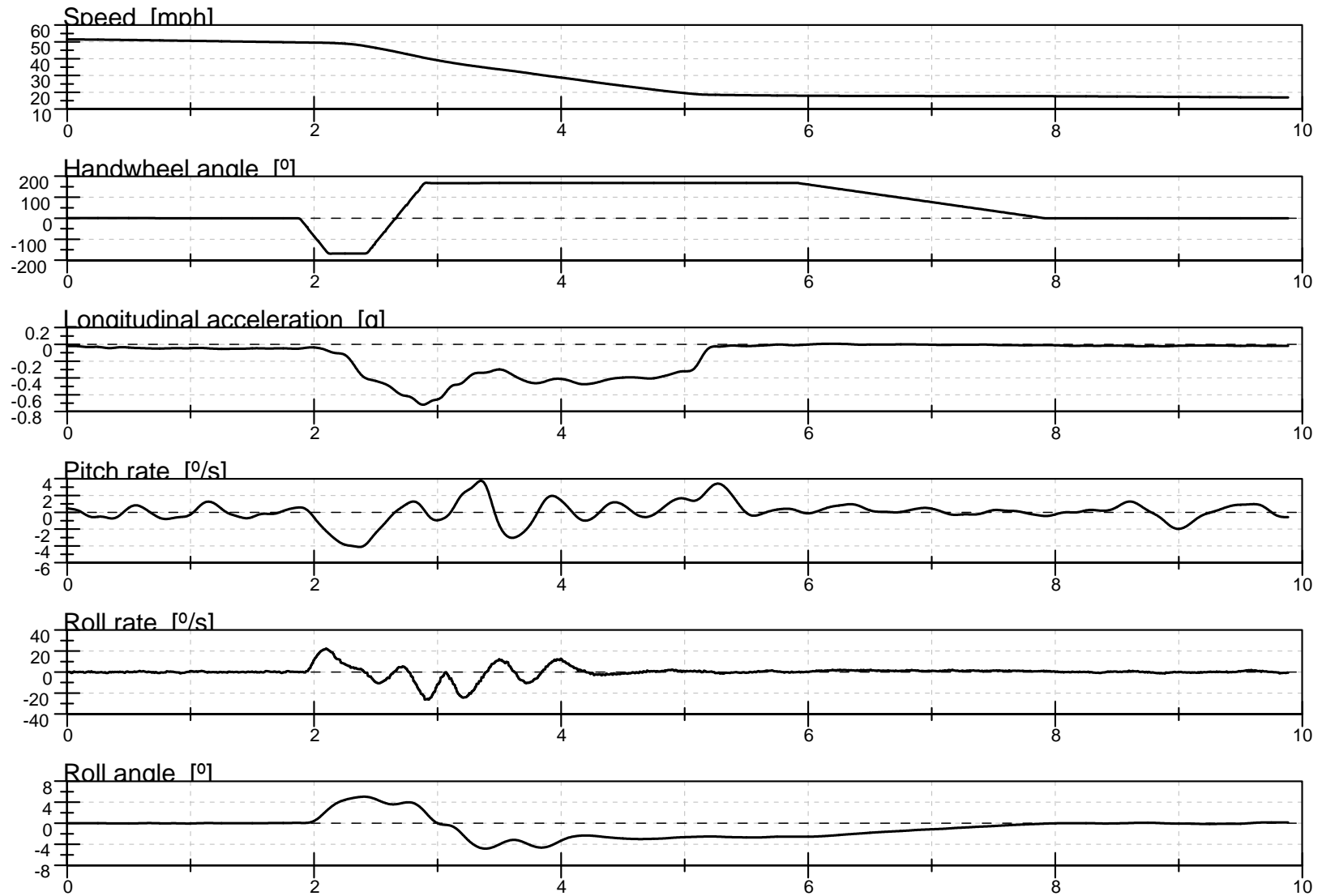


Figure D4. Pitch Rate and Longitudinal Acceleration Time History Plots for Default Test Series, L-R, 50 mph

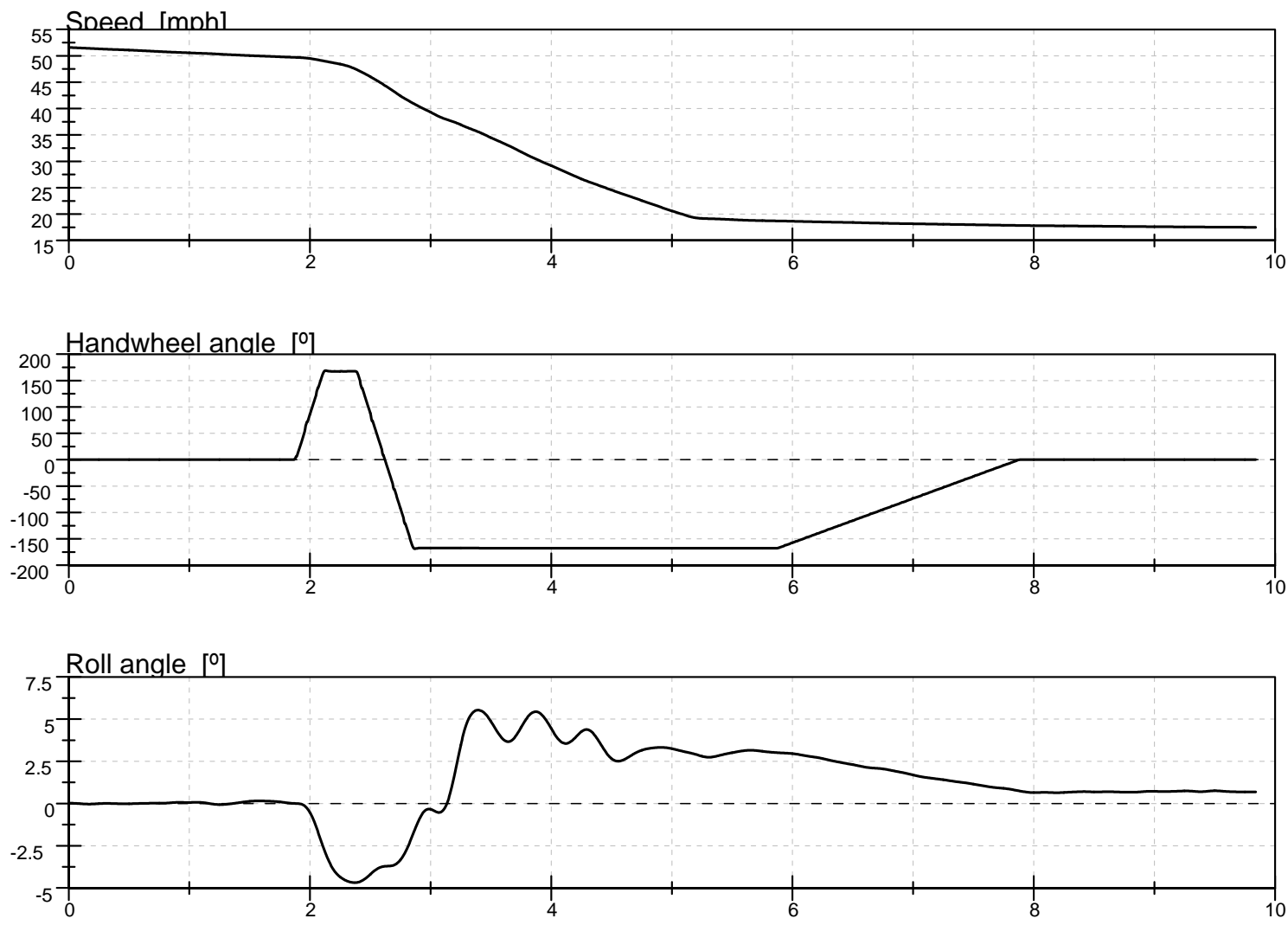


Figure D5. Vehicle Speed, Handwheel Angle, and Roll Angle Time History Plots for Default Test Series, R-L, 50 mph

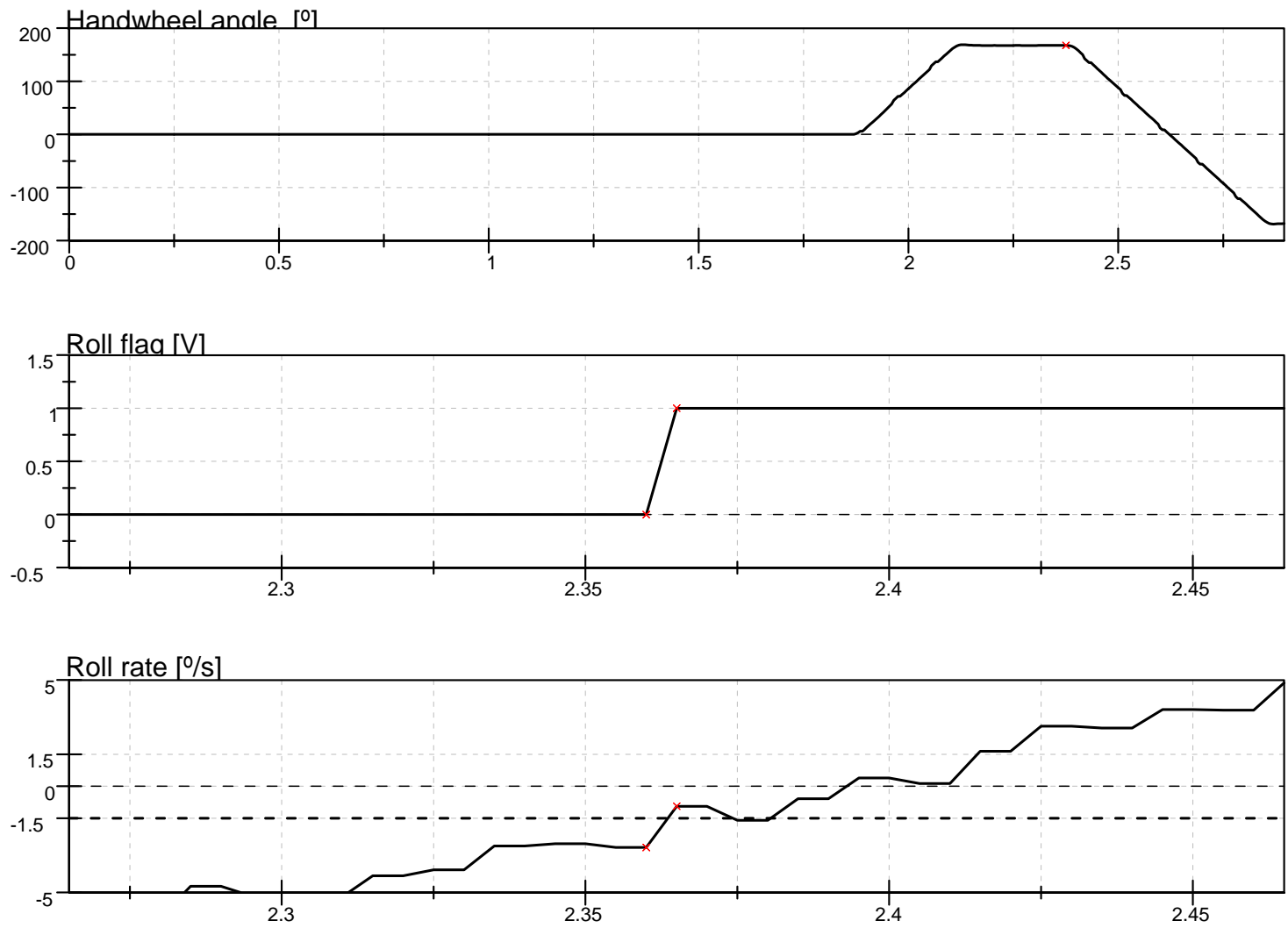


Figure D6. Steering Machine Operation Time History Plots for Default Test Series, R-L, 50 mph

FILENAME: FH008

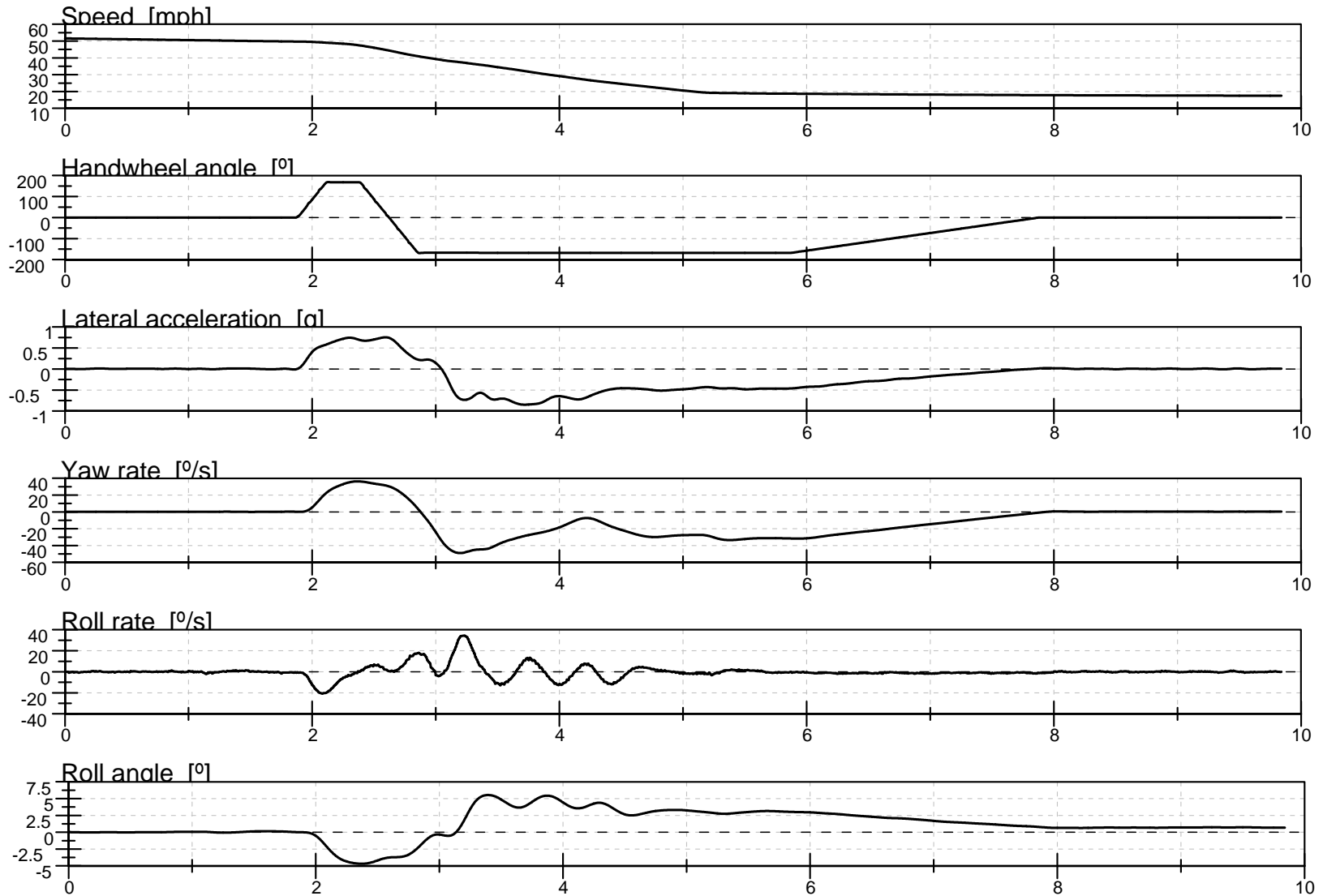


Figure D7. Yaw Rate, Roll Rate, and Lateral Acceleration Time History Plots for Default Test Series, R-L, 50 mph

FILENAME: FH008

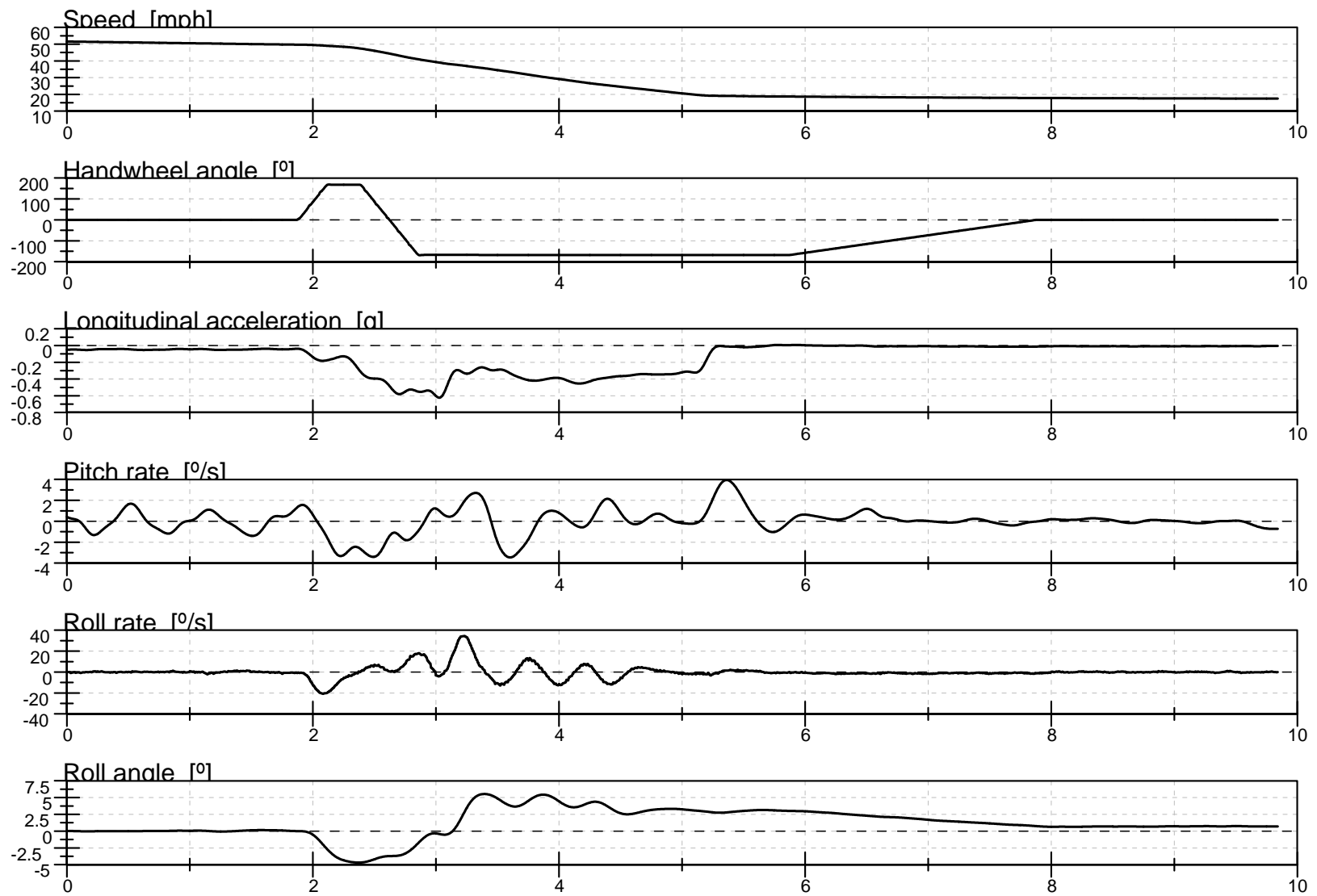


Figure D8. Pitch Rate and Longitudinal Acceleration Time History Plots or Default Test Series, R-L, 50 mph

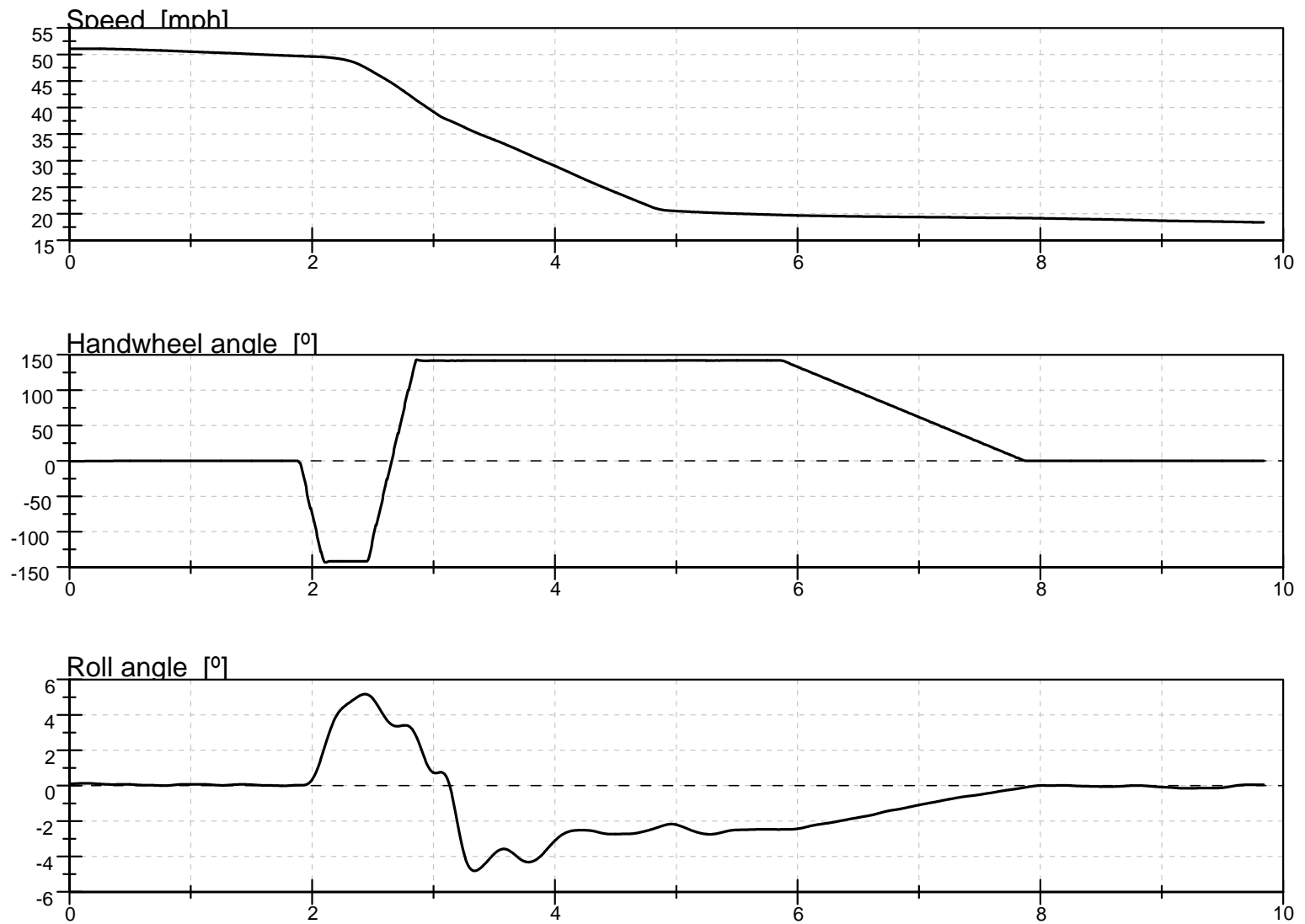


Figure D9. Vehicle Speed, Handwheel Angle, and Roll Angle Time History Plots for Supplemental 2 Test Series, L-R, 50 mph

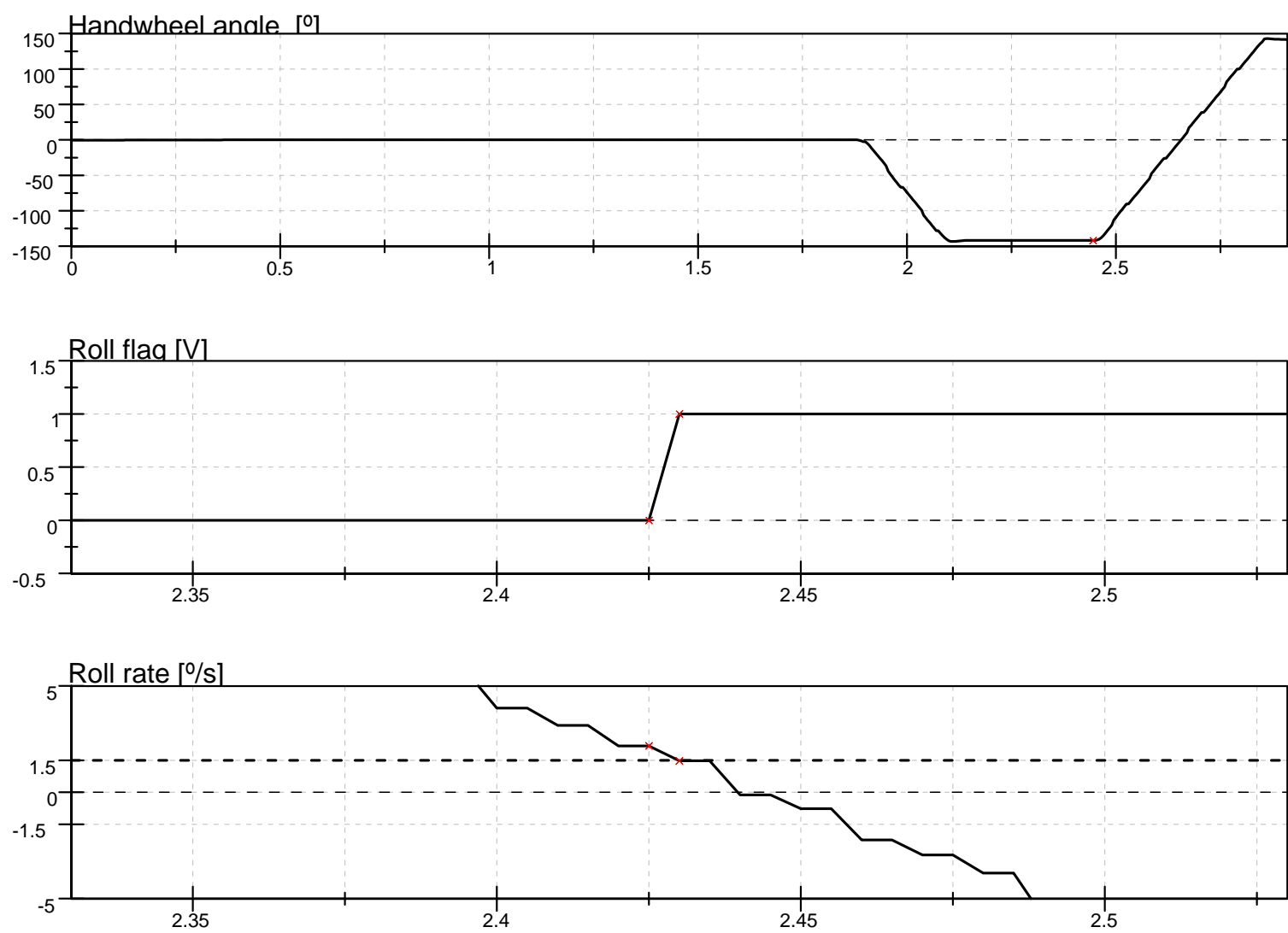


Figure D10. Steering Machine Operation Time History Plots for Supplemental 2 Test Series, L-R, 50 mph

FILENAME: FH011

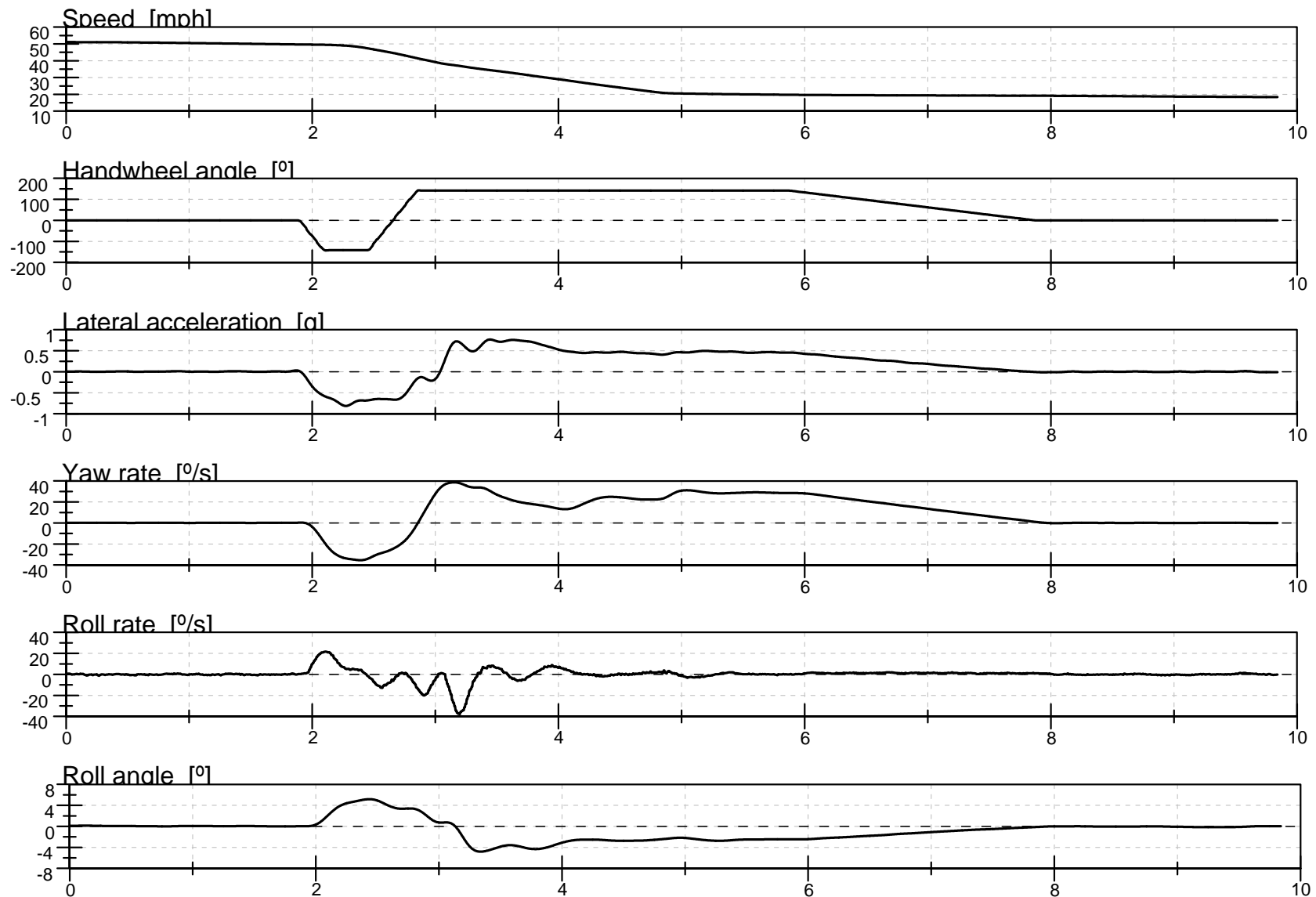


Figure D11. Yaw Rate, Roll Rate, and Lateral Acceleration Time History Plots for Supplemental 2 Test Series, L-R, 50 mph

FILENAME: FH011

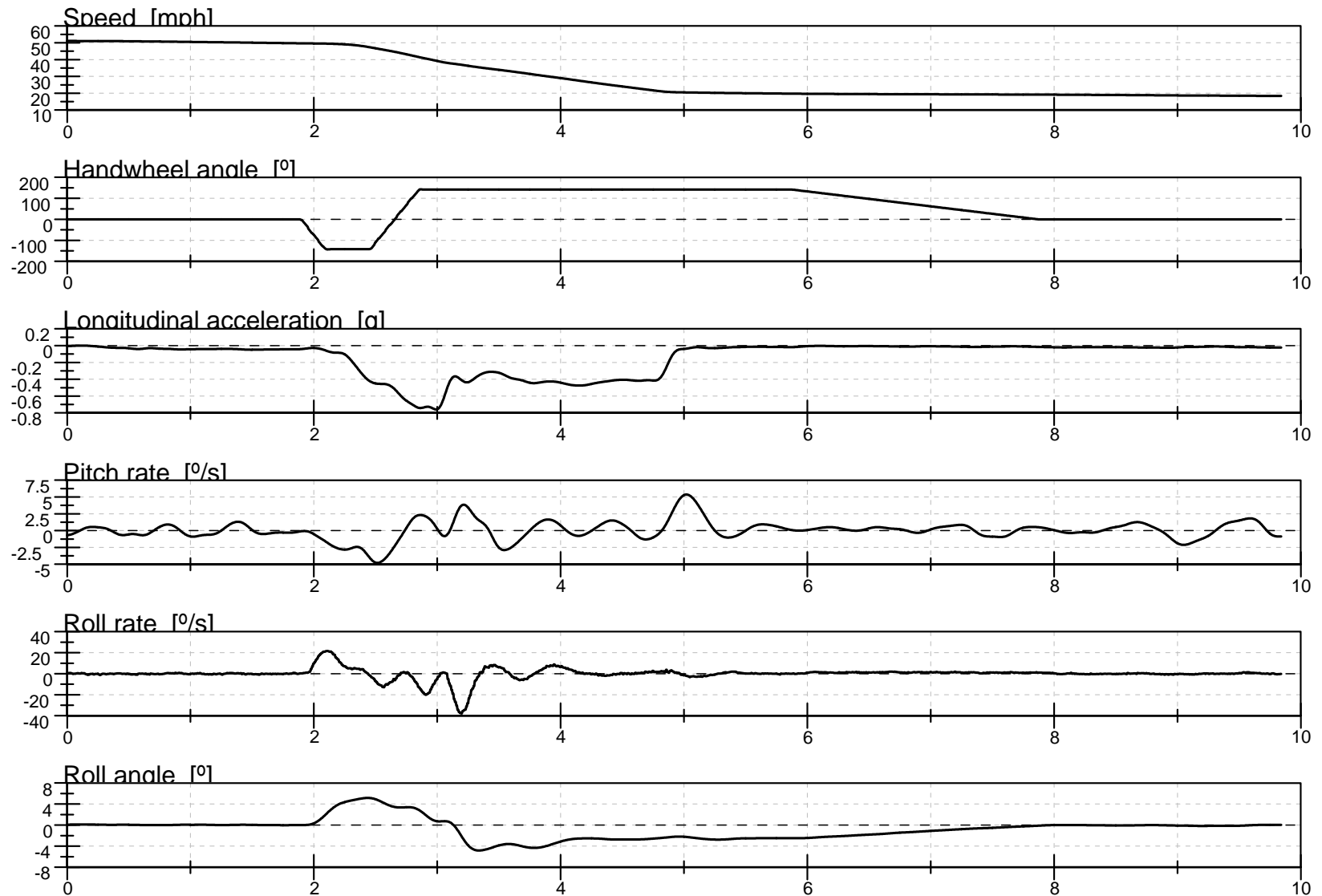


Figure D12. Pitch Rate and Longitudinal Acceleration Time History Plots for Supplemental 2 Test Series, L-R, 50 mph

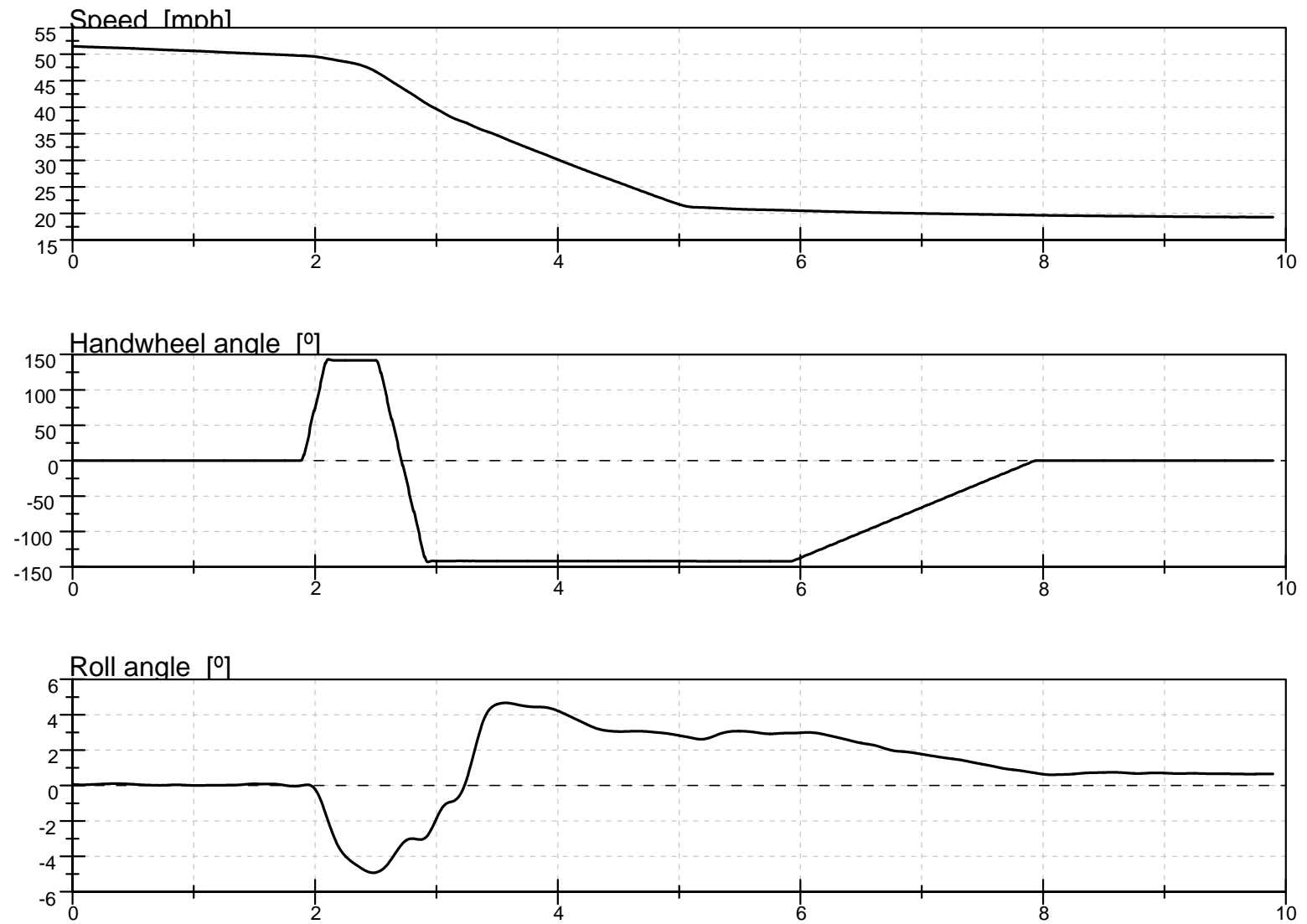


Figure D13. Vehicle Speed, Handwheel Angle, and Roll Angle Time History Plots for Supplemental 2 Test Series, R-L, 50 mph

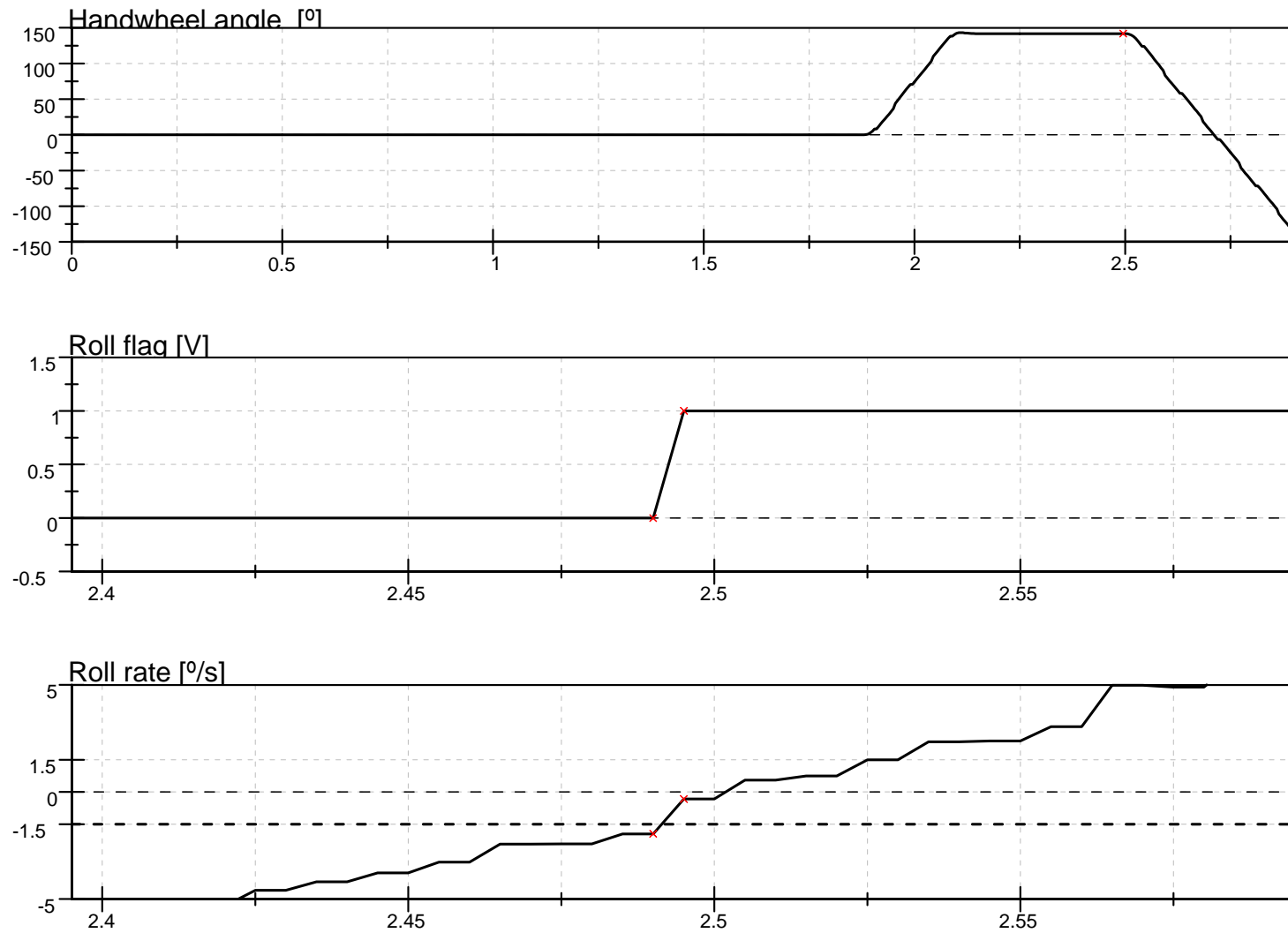


Figure D14. Steering Machine Operation Time History Plots for Supplemental 2 Test Series, R-L, 50 mph

FILENAME: FH014

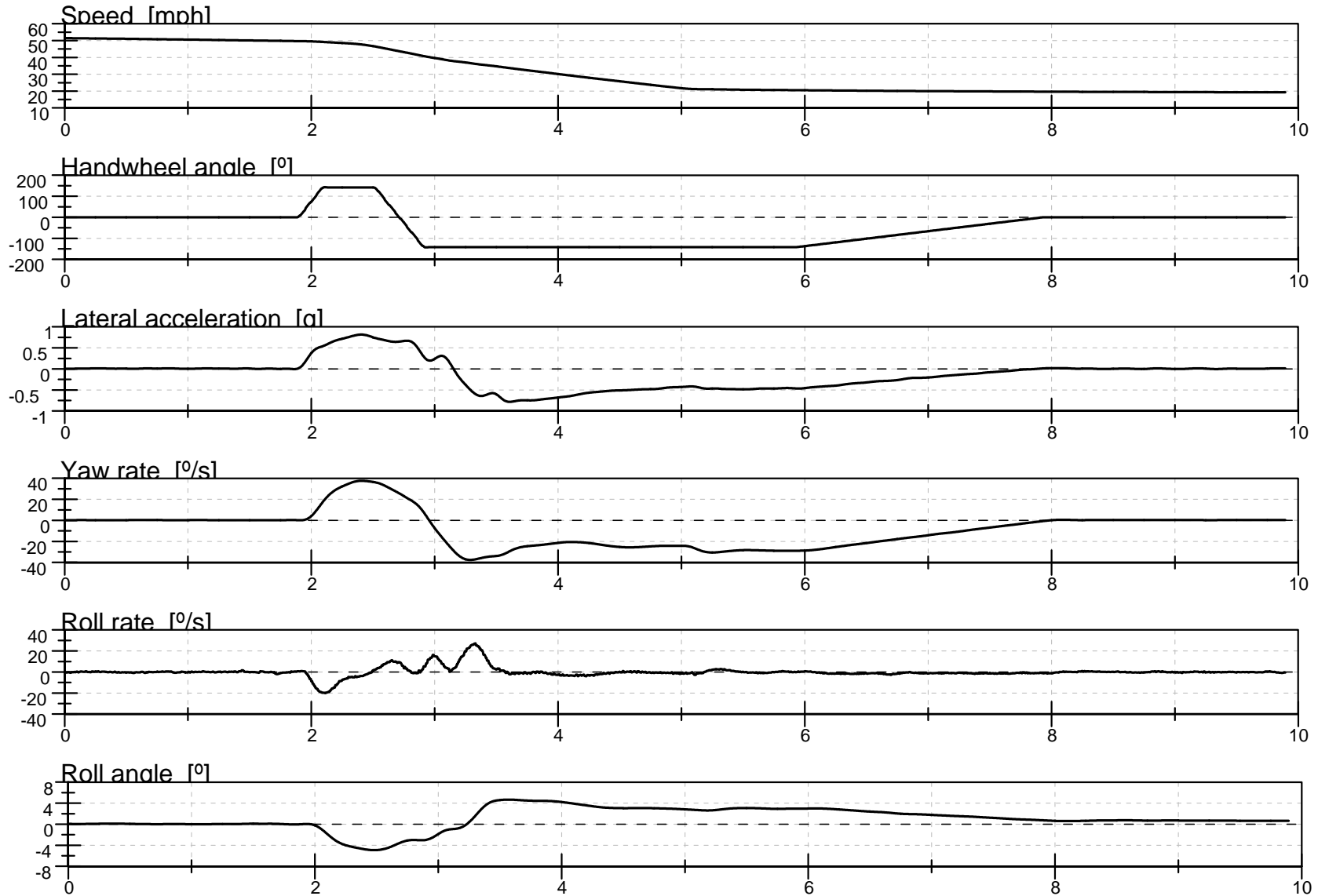


Figure D15. Yaw Rate, Roll Rate, and Lateral Acceleration Time History Plots for Supplemental 2 Test Series, R-L, 50 mph

FILENAME: FH014

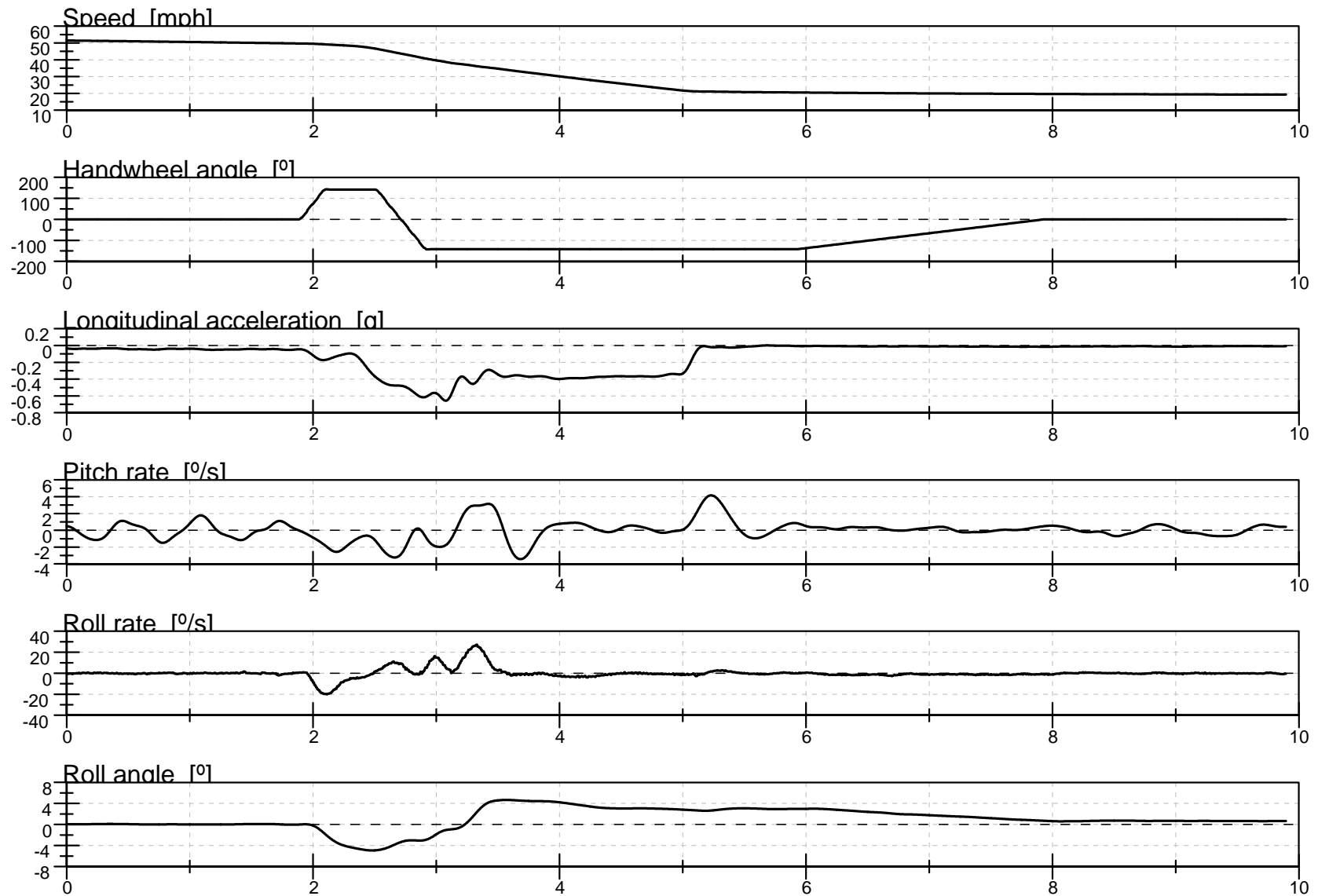


Figure D16. Pitch Rate and Longitudinal Acceleration Time History Plots for Supplemental 2 Test Series, R-L, 50 mph