



Yokohama Corporation of North America  
1 MacArthur Place, Suite 800 | Santa Ana, CA 92707

U.S. Department of Transportation  
National Highway Traffic Safety Administration  
Docket Section  
400 Seventh Street SW  
Washington, DC 20590



09 March 2021

U.S. Department of Transportation  
National Highway Traffic Safety Administration  
Docket section  
400 Seventh Street SW  
Washington, DC 20590

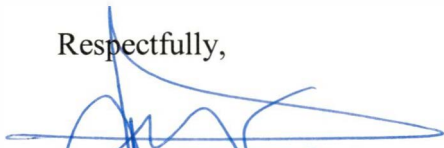
RE: New Pneumatic Tires for Motor Vehicles With a GVWR Less Than 10,000 Pounds.

Pursuant to 49 CFR Ch 5 §571.139 Standard No. 139 Yokohama Tire Corporation (YTC), on behalf of Yokohama Rubber Corporation, advises that it will manufacture and distribute a new 145/80R15 77(LI) Yokohama brand passenger car tire in the G.T. Special Classic Y350 tread design for use and service in the United States market. This tire is designed in a size and maximum loads rating currently not listed in the 2020 Year Book of the Tire and Rim Association as indicated in the attached tire specification table. This information has been prepared and will be provided to users of this new product with sufficient information to permit their proper selection and safe operational performance.

This new 145/80R15 77 (LI) YOKOHAMA G.T. SPECIAL CLASSIC Y350 tire will be available for sale and distribution in the U.S. market beginning approximately within 3<sup>rd</sup> quarter of 2021 and all of its descriptive and specification literature is being prepared now and will be in both print and electronic formats for customer access and use prior to the tire sale.

If any further detail or clarification of this provided information is required, please direct any inquiry to me here at the corporate office address, by phone at 800-423-4544, extension 3836, or via email at [harold.cruz@yokohamatire.com](mailto:harold.cruz@yokohamatire.com).

Respectfully,

  
Harold Q. Cruz 3.9.21  
Corporate Quality Engineering

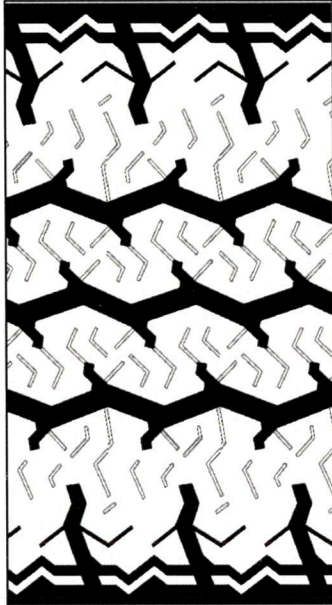
Attachment: Tire Specification Chart- YOKOHAMA G.T. SPECIAL CLASSIC Y350  
145/80R15 77(LI)



YRCドキュメント申請(PC)

**PRODUCT NAME**

YOKOHAMA G.T.SPECIAL CLASSIC Y350  
145/80R15 77(L) S Y350



**SPECIFICATIONS**

TIRE SIZE DESIGNATION	LOAD INDEX	TEST RIM WIDTH (INCHES)	MINIMUM SIZE FACTOR (INCHES)	SECTION WIDTH (INCHES)
145/80R15	77	4.0	29.92	5.83

**MAXIMUM TIRE LOADS (kg) AT VARIOUS COLD INFLATION PRESSURES (kPa)**

INFLATION PRESSURE [kPa]	150	160	170	180	190	200	210	220	230	240	250	350
TIRE LOAD [kg]	275	290	305	315	330	245	360	370	385	400	412	412