



DEPARTMENT OF  
TRANSPORTATION

2021 JAN 28 A 10: 12

DOCKET OPERATIONS

19 January 2021

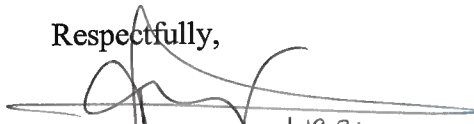
Docket Section  
National Highway Traffic Safety Administration  
1200 New Jersey Ave. SE.  
Washington, DC 20590

RE: New Pneumatic Tires for Motor Vehicles with a GVWR More Than 4,536  
Kilograms (10,000 Pounds)

Pursuant to 49 CFR Ch 5 §571.119 Standard No. 119 Yokohama Tire Corporation (YTC), on behalf of Yokohama Rubber Company, advises the manufacturing and distribution of 425/65R22.5 Load Range (L) Yokohama brand truck/bus tire in the RY253 tread design for use and service in the United States market. This tire is designed to carry maximum loads in excess of the maximum loads currently listed in the 2020 Year Book of the Tire and Rim Association as indicated in the attached tire specification table. This information has been prepared and provided to users of this product with sufficient information to permit their proper selection and safe operational performance. All its descriptive and specification literature is available in both print and electronic formats for customer access and use.

If any further detail or clarification of this provided information is required, please direct any inquiry to me here at the corporate office address, by phone at 800-423-4544, extension 3836, or via email at [harold.cruz@yokohamatire.com](mailto:harold.cruz@yokohamatire.com).

Respectfully,

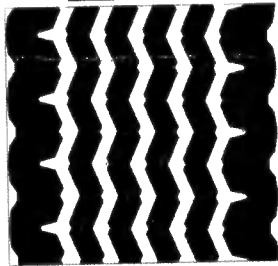


Harold Q. Cruz 1.19.21  
Corporate Quality Assurance

Attachment: Tire Specification Chart- Yokohama 425/65R22.5 Load Range (L) RY253



### RY253



#### Specifications

Tire Size	Ply Rating (L.R.)	Rim Size		Inflated Dimensions		Groove Depth (1/32inch)	Loaded Dimensions			Load Capacity at Cold Inflation Pressure			
		Meas. [inch]	Alt. [inch]	Overall Width [inch]	Overall Diameter [inch]		Section Width [inch]	Static Radius [inch]	PRM	lb/psi Single	lb/psi Dual	kg/kPa Single	kg/kPa Dual
425/65R22.5	L	12.25	13.00	16.5	1133	23	17.9	20.5	471	11400/120		5170/830	

#### Load Limits at various Inflation Pressure

Inflation Pressure[psi]	65	70	75	80	85	90	95	100	105	110	115	120
Single Load[lbs]	7390	7760	8220	8580	9020	9330	9740	10100	10400	10700	11000	11400