

**NEW CAR ASSESSMENT PROGRAM (NCAP)
DYNAMIC ROLLOVER RESISTANCE TEST**

SUBARU CORPORATION

2020 Subaru Outback

TEST NUMBER: NCAP-DRI-RR-20-21

Final Report
9 April 2020



Prepared by:

Dynamic Research, Inc.
355 Van Ness Ave. #200
Torrance, CA 90501

Prepared for:

National Highway Traffic Safety Administration
New Car Assessment Program
1200 New Jersey Avenue S.E.
Washington, DC 20590

The United States Government assumes no liability for the contents of this report or use thereof. If trade or manufacturers' names or products are mentioned, it is only because they are considered essential to the object of the publication and should not be construed as an endorsement. The United States Government does not endorse products or manufacturers.

Dynamic Research, Inc. does not endorse or certify products of manufacturers. The manufacturer's name appears solely to identify the test article. Dynamic Research, Inc. assumes no liability for the report or use thereof. It is responsible for the facts and the accuracy of the data presented herein. This report does not constitute a standard, specification, or regulation.

Report Prepared by:

John Lenkeit, Program Manager

Date: 9 April 2020

Jonathan Robel, Test Engineer

1. Report No. NCAP-DRI-RR-20-21	2. Government Accession No.	3. Recipient's Catalog No.	
4. Title and Subtitle NCAP Dynamic Rollover Resistance Maneuver (Fishhook) Test of a 2020 Subaru Outback MPV		5. Report Date 9 April 2020	6. Performing Organization Code DRI
		8. Performing Organization Report No. DRI- TM-18-127	
7. Author(s) John Lenkeit, Program Manager Jonathan Robel, Test Engineer		10. Work Unit No. (TRAIS)	
9. Performing Organization Name and Address Dynamic Research, Inc. 355 Van Ness Ave. #200 Torrance, CA 90501		11. Contract or Grant No. DTNH22-14-D-00332	
		13. Type of Report and Period Covered Final Report January 2020 to April 2020	
12. Sponsoring Agency Name and Address National Highway Traffic Safety Administration New Car Assessment Program 1200 New Jersey Avenue S.E. Washington, DC 20590		14. Sponsoring Agency Code NRM-110	
		15. Supplemental Notes	
16. Abstract An NCAP Dynamic Rollover Maneuver (Fishhook) Test was conducted on a 2020 Subaru Outback at Dynamic Research, Inc. on January 23, 2020. The vehicle did not experience two-wheel lift. The vehicle's steering angle at 0.3 g lateral acceleration at 50 mph was 26.2 degrees.			
17. Key Words New Car Assessment Program Rollover Fishhook Test		18. Distribution Statement Copies of this report are available from: National Highway Traffic Safety Admin. New Car Assessment Program 1200 New Jersey Ave., S.E. Washington, DC 20590	
19. Security Classif. (of this report) Unclassified	20. Security Classif. (of this page) Unclassified	21. Number of Pages 54	22. Price

TABLE OF CONTENTS

	Page
I. INTRODUCTION.....	1
II. VEHICLE PREPARATION	2
A. Test Vehicle	2
B. Tires	2
C. Vehicle Loading.....	2
D. Steering Controller	5
E. Real-Time Controller and Data Acquisition	5
F. Equipment Weight.....	6
G. Sensors	6
H. Other Vehicle Preparation	6
III. TEST PROCEDURES.....	9
A. Test Procedure Overview.....	9
B. Test Conditions	10
IV. RESULTS.....	13
APPENDIX A Photographs	A-1
APPENDIX B Test Run Log.....	B-1
APPENDIX C Slowly Increasing Steer Test Worksheet.....	C-1
APPENDIX D Time History Plots	D-1

LIST OF FIGURES

	Page
1. Nominal Position of Video Cameras for Fishhook Tests	8
2. DRI-Minter Vehicle Dynamics Area	12

LIST OF TABLES

	Page
1. Test Vehicle Data	3
2. Tire Information	4
3. Vehicle Loading	4
4. Weight of In-Cab Test equipment.....	6
5. Sensor Specifications	7
6. Surface Friction	10
7. Handwheel Angles	10
8. Weather Conditions.....	11

Section I
INTRODUCTION

Beginning with the 2006 fiscal year, the National Highway Traffic Safety Administration (NHTSA) has engaged Dynamic Research, Inc. (DRI) of Torrance, CA to conduct dynamic rollover testing and gather data from that testing as part of NHTSA's New Car Assessment Program (NCAP).

The purpose of the testing reported herein was to determine if a typical 2020 Subaru Outback would experience tip-up, defined as simultaneous two-wheel lift of two inches or more at an entry speed of 50 mph or less in the Fishhook Procedure developed by NHTSA. This procedure may be found at www.regulations.gov, docket item NHTSA-2006-26555-0136.

The testing reported herein was accomplished under contract DTNH22-14-D-00332. The task order is entitled, "NCAP Dynamic Rollover Testing."

Section II
VEHICLE PREPARATION

A. Test Vehicle

The test vehicle was new or in as-new condition, meaning the vehicle had been driven no more than 500 miles prior to the start of dynamic rollover testing. It was acquired through a commercial rental/leasing company. Details of the test vehicle are given in Table 1.

B. Tires

All tires used were new, and of the same make, model, size, and DOT specification of those installed on the vehicle when purchased new. Tire inflation pressures were in accordance with the recommendations indicated on each vehicle's identification placard. To further reduce the possibility of tire debanding, the tires were mounted to the rims without the use of tire mounting lubricant. Tire specifications are listed in Table 2.

C. Vehicle Loading

The multi-passenger load, described in the Fishhook Procedure, was used for all tests. The load and positioning of the load in the vehicle are listed in Table 3.

In addition to water dummies, the loading included instrumentation, a steering machine, and outriggers. Test vehicle bumper assemblies were removed for outrigger installation. The reduction in vehicle weight due to the removal of the bumpers was offset by the additional weight of the outriggers and their mounting system. The outrigger system typically outweighs the bumper assemblies.

Table 1. Test Vehicle Data

General Data					
Model year, make, model	2020 Subaru Outback				
VIN	4S4BTANC2L314xxxx				
Vehicle type/Body style	MPV/MPV				
Number of doors	4				
Trim level	LIMITED/LDF				
Seating positions	Front:	2 nd row	3 rd row	4 th row	5 th row
	2	3	0	0	0
Electronic stability control	Yes				
4-Wheel ABS (Yes/No)	Yes				
Power steering (Yes/No)	Yes				
Major optional equipment	STARLINK 11.6" Multimedia Navigation Infotainment System, Power Moonroof w/ Slide and Tilt, Driver Focus (Distraction Mitigation System), Heated Steering Wheel, Wireless Charger, Rear Bumper Cover, All-Weather Floor Liners, Sunshade, LED Upgrade - Dome Light.				
Odometer at start of testing	8 miles				
Drivetrain					
Engine cylinder arrangement	Inline 4				
Engine displacement	2.5 L				
Transmission type	CVT				
Drive arrangement	AWD				
Chassis					
Track width	F: 62 in (1574.8 mm), R: 62.5 in (1587.5 mm)				
Wheelbase	108.25 in (2749.5 mm)				
Curb weight	3725 lb (1689.6 kg)				
Certification Data from Vehicle's Label					
Vehicle manufactured by	SUBARU CORPORATION				
Date of manufacture	11/19				
GVWR	4850 lb (2200 kg)				
GAWR Front	2756 lb (1250 kg)				
GAWR Rear	2690 lb (1220 kg)				

Table 2. Tire Information

Tire Manufacturer	YOKOHAMA
Tire Model	AVID GT BluEarth
Tire Size	Front: 225/60R18 Rear: 225/60R18
Load rating	Front:100 Rear:100
Speed rating	Front: H Rear: H
Treadwear grade	Front: 400 Rear: 400
Traction grade	Front: B Rear: B
Temperature grade	Front: A Rear: A
Location of "Recommended Tire Pressure" label	Driver's door jamb
Recommended cold tire pressure	Front: 35 psi, (240 kPa) Rear: 33 psi, (230 kPa)
First 8 digits of DOT code	Front: 4UHD 6JH Rear: 4UHD 6JH

Table 3. Vehicle Loading

Water dummy and other loading	3 water dummies in second row
Water dummy weight	175 lb (79.4 kg)
Fuel level	Full
Weight as Tested	
Left front	1278 lb (579.7 kg)
Right front	1177 lb (533.9 kg)
Left rear	1158 lb (525.3 kg)
Right rear	1146 lb (519.8 kg)

D. Steering Controller

Precise controlled steering is accomplished using a steering machine designed and constructed by DRI. DRI has used its Automated Vehicle Controller (AVC) steering machine for many vehicle tests including FMVSS 126 tests. It can provide up to 65 ft-lb torque and rates over 1300 deg/sec. The integrated angle encoder has an unlimited range with a resolution of 0.045 degrees and an accuracy of ± 0.045 degrees. The steering motor is controlled by a MicroAutoBox II from dSPACE, which also acts as the data acquisition system.

E. Real-Time Controller and Data Acquisition

Data acquisition is achieved using a MicroAutoBox II from dSPACE, which also serves as the real-time system for the steering controller. Data from the Oxford IMU, including Longitudinal, Lateral, and Vertical Acceleration, Roll, Yaw, and Pitch Rate, Forward and Lateral Velocity, Roll and Pitch Angle, are sent over Ethernet to the Micro AutoBox. The Oxford IMUs are calibrated per the manufacturer's recommended schedule (Table 5). The MicroAutoBox II specifications are:

Model: dSPACE Micro-Autobox II 1401/1513
Base Board SN 549068
I/O Board SN 588523

Two video cameras were used to record the Fishhook runs. They were positioned nominally as shown in Figure 1. The recorded videotapes were reviewed after the Fishhook runs to check for any two-wheel lift. If any two-wheel lift was observed, eight infrared distance- measuring sensors for measurement of wheel lift (two sensors at each wheel) were then mounted for use in subsequent confirmation Fishhook tests.

F. Equipment Weight

Table 4 lists the equipment and associated weights outlined in the NHTSA Laboratory Test Procedure for Dynamic Rollover and the equipment at DRI used for this specific test program. The equipment used at DRI for this test program differs slightly from the equipment that was previously used by NHTSA for rollover testing. Because DRI's equipment is lighter than NHTSA's equipment, DRI uses ballast to maintain a consistent weight and weight distribution in the vehicle.

Table 4. Weight of In-Cab Test Equipment

Equipment	Location	Equipment Weight (lb)	
		NHTSA*	DRI
Data Acquisition System	Front passenger seat	58	
Steering Machine	Handwheel	31	31
Steering Machine Electronics Box	Passenger row foot well behind the front passenger seat. If vehicle does not have a rear passenger row foot well, the Electronics Box should be placed in the front passenger seat foot well.	39	
MABX, and laptop	Front passenger seat		21
Motor control and power supply	Front passenger footwell		26
Ballast	Front passenger footwell		50
Total		128	128

* Table A.1 from US DOT NHTSA - Laboratory Test Procedure for Dynamic Rollover - The Fishhook Maneuver Test Procedure - New Car Assessment Program (NCAP) - March 2013

G. Sensors

A list of the sensors is given in Table 5.

H. Other Vehicle Preparation

In addition to installation and preparation discussed above, the test vehicle was prepared as follows:

- Front and rear bumpers were removed
- Outrigger mounts were installed in the bumper locations and titanium outriggers were fastened to these mounts
- Airbags were removed or otherwise disabled
- Photographs of the vehicle tested are given in Appendix A.

Table 5. Sensors

Measured Variable	Sensor	Range	Resolution	Accuracy	Specifics	Serial Number	Calibration
Vehicle Tire Pressure	Tire Pressure Gauge	0-100 psi 0-690 kPa	0.01 psi 6.89 kPa	< 1% error between 20 and 100 psi	Omega DPG8001	17042707002	By: DRI Date: 7/3/2019 Due: 7/3/2020
Vehicle Total, Wheel, and Axle Load	Platform Scales (Minter)	1200 lb/platform 5338 N/platform	1 lb 4.4 N	0.5% of applied load	Intercomp SWI	1110M206352	By: DRI Date: 1/6/2020 Due: 1/6/2021
	Platform Scales (Torrance)	1500 lb/platform 6672 N	1 lb 4.4 N	0.5% of applied load	Intercomp SWII	NT2888	By: DRI Date: 1/16/2020 Due: 1/16/2021
Handwheel Angle	Steering Angle Encoder (Automated Steering Controller)	±800 deg	0.045 deg	±0.045 deg	DRI Automatic Vehicle Controller using dSPACE Micro-Autobox II	NA	Verified by DRI at installation ¹
Longitudinal, Lateral, and Vertical Acceleration Roll, Yaw, and Pitch Rate, Forward and Lateral Velocity, Roll and Pitch Angle	Multi-Axis Inertial Sensing System	Accels ± 5 g, Angular Rate ±300 deg/s, Angle >45 deg, Velocity >200 km/h	Accels .001 g, Angular Rate 0.01 deg/s, Angle 0.05 deg, Velocity 0.1 km/h	Accels .001g, Angular Rate 0.01 deg/s, Angle 0.05 deg, Velocity 0.1 km/h	Oxford xNav 550	015386	By: Oxford Technical Solutions Date: 8/8/2019 Due: 8/8/2021

1. The steering encoder is checked prior to beginning tests to verify that there are no faults. The steering controller is installed in the vehicle and the steering wheel is turned through two complete revolutions while recording data. The data are then reviewed for any dropouts or other nonlinearities that would indicate dust intrusion or faulty sectors.

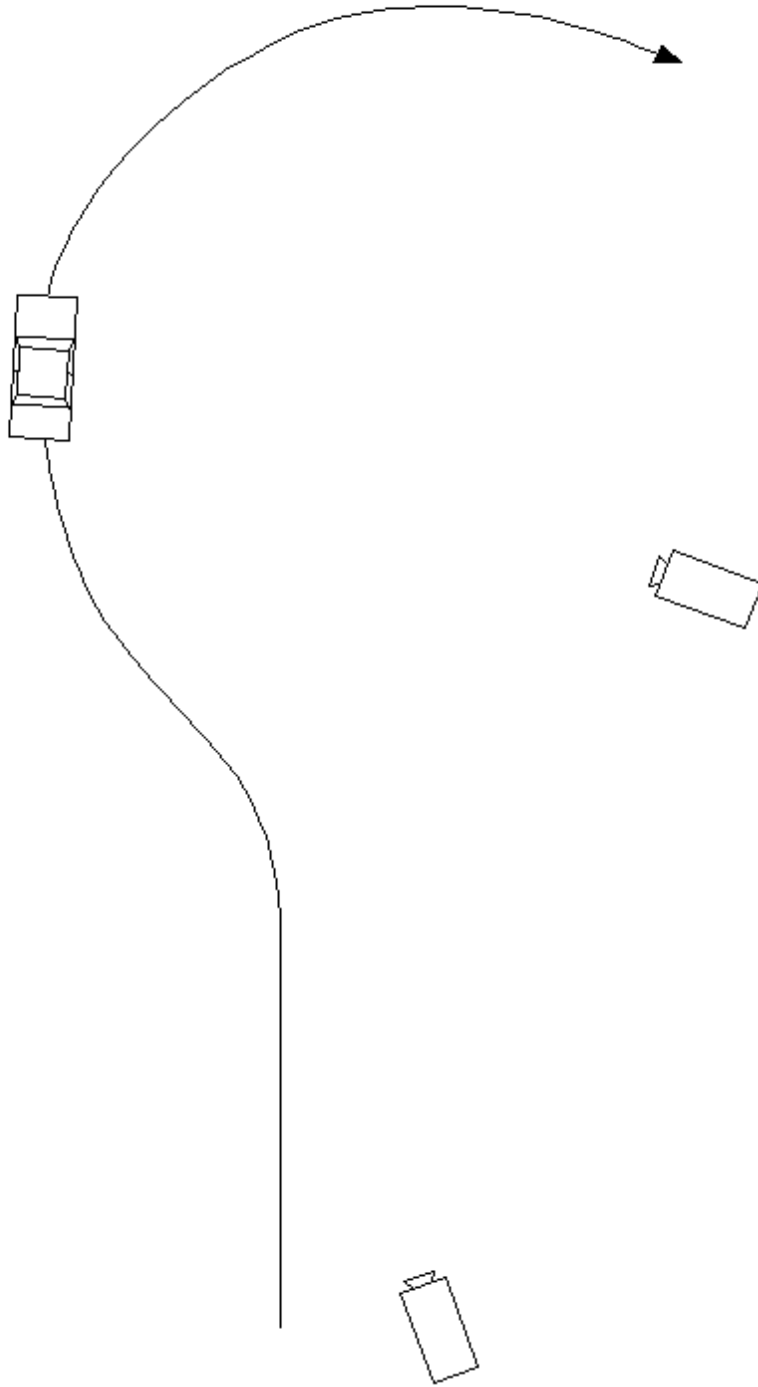


Figure 1. Nominal Position of Video Cameras for Fishhook Tests

Section III

TEST PROCEDURES

This section includes a general overview of the test procedures and details of the particular test.

A. Test Procedure Overview

This test was conducted in accordance with NHTSA's NCAP Rollover Resistance Test Procedure (Fishhook) as described in the Federal Register (68 FR 59250). Detailed descriptions of the test procedure, pass/fail criteria, and data acquisition specifications may be found at docket NHTSA-2001-9663.

There are two major components of the test procedure, the Slowly Increasing Steer (SIS) pre-test and the Fishhook test.

The Slowly Increasing Steer (SIS) maneuver was used to characterize the steady state lateral dynamics of each vehicle, and is based on the "Constant Speed, Variable Steer" test defined in SAE J266. The maneuver is used to determine the handwheel angle that produces a lateral acceleration of 0.3 g at 50 mph. This handwheel angle is then used to determine the magnitude of steering to be used for the NHTSA Fishhook maneuver.

SIS tests were performed at a constant speed of 50 mph. Handwheel angle was input at a rate of 13.5 deg/sec, from 0 to an angle that provided at least 0.55 g. Three tests were conducted in each direction, and the data for the six runs were averaged to obtain the handwheel angle that produced 0.3 g at 50 mph.

The Fishhook test is a programmed steering maneuver that is implemented via the steering controller. The vehicle was initially steered in one direction and then the steering was reversed. The timing, magnitude, and rate of the steering were prescribed by the Fishhook Procedure.

To begin the maneuver, the vehicle was driven in a straight line at a speed slightly greater than the desired entrance speed. The driver then released the throttle. When the vehicle was at the target speed, the steering controller automatically initiated the steering maneuver. Following completion of the steering reversal, the handwheel position was maintained for three seconds and then returned to zero angle in 1 second.

The tests were conducted in both left-right and right-left directions. The "Default" test series used a handwheel angle equal to 6.5 times the handwheel angle that produced 0.3 g at 50 mph in the SIS tests, and initial vehicle speeds beginning at 35 mph and concluding up to 50 mph (if no two-wheel lift occurs). Supplemental tests were also done, as specified in the Fishhook Procedure.

B. Test Conditions

1. TEST SURFACE

The tests were conducted on the Vehicle Dynamics Area at DRI's Minter Field facility, located near Bakersfield, California, on 1/23/2020. The VDA has a smooth, flat (slope less than 0.5% throughout) asphaltic concrete surface. Its dimensions are as shown in Figure 2. It was built in the spring of 2005.

VDA surface friction measurements were accomplished using the DRI Mobile Tire Tester. Three runs were done, one at each of three previously determined locations. Each run provided for a minimum of 3 seconds of tire friction at constant normal load, slip angle, and speed in a free rolling condition. The test was accomplished using an ASTM E1136 tire with an inflation pressure of 35 (± 0.5) psi at a test speed of 40 (± 0.5) mph. The net slip angle of the test tire for each test run was 7.5 deg. The test tire was no older than 6 months from the date of manufacture. The surface friction measurement results are shown in Table 6.

Table 6. Surface Friction

Date of surface friction measurements	1/24/2020
Average normalized lateral force	0.773

2. FISHHOOK HANDWHEEL ANGLES

The 0.3 g handwheel angle obtained from the SIS tests and the handwheel angles used in the Fishhook tests are shown in Table 7.

Table 7. Handwheel Angles

0.3 g handwheel angle (from SIS tests at 50 mph)	26.2°
5.5 scalar handwheel angle for Fishhook Test	144°
6.5 scalar handwheel angle for Fishhook Test	170°

3. WEATHER CONDITIONS

The weather conditions, recorded at the end of testing, are shown in Table 8.

Table 8. Weather Conditions

Ambient temperature	50° F (10° C)
Wind Speed	3 mph (1.2 m/s)
Wind Direction	150

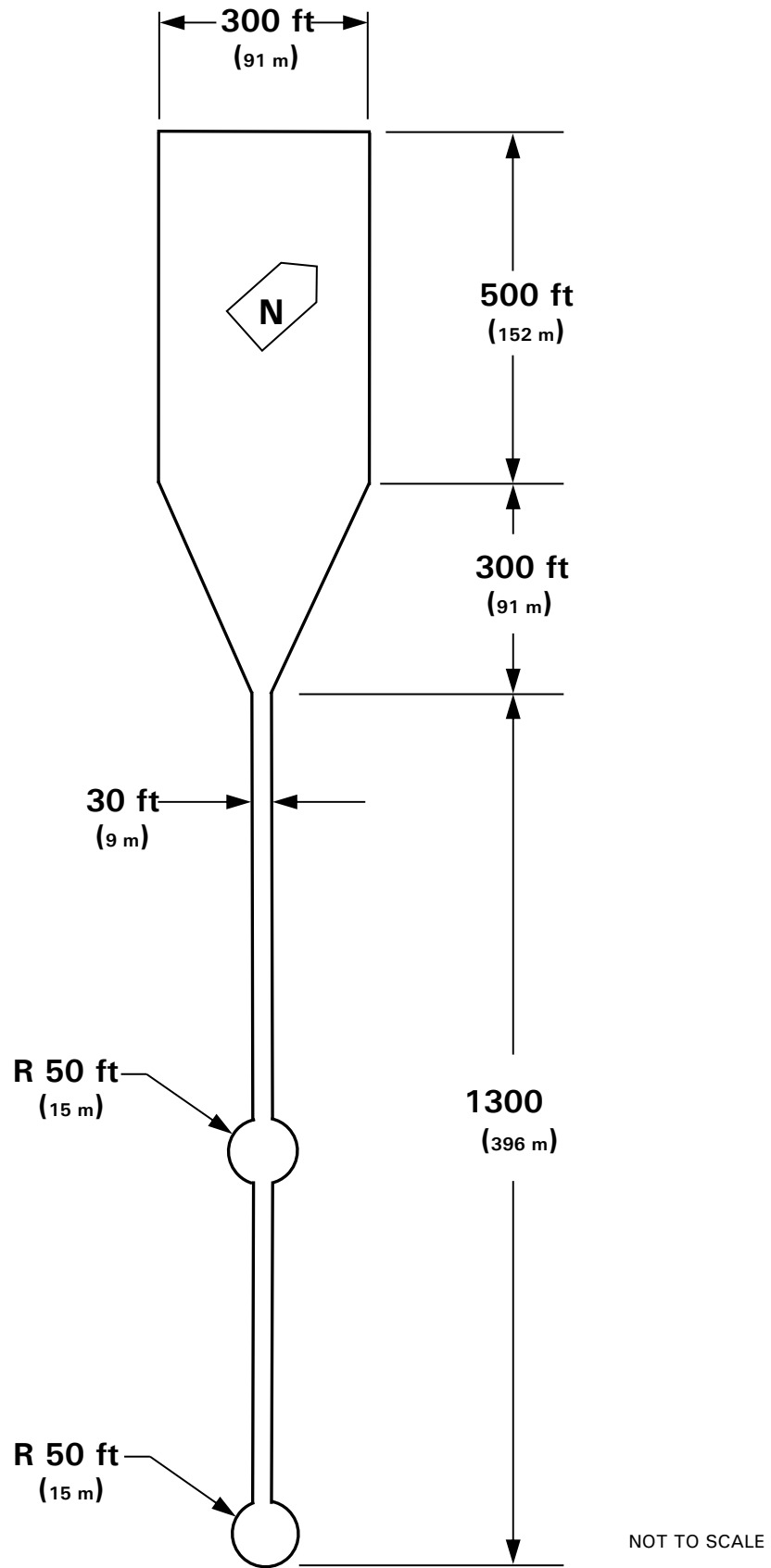


Figure 2. DRI-Minter Vehicle Dynamics Area

Section IV

RESULTS

The test run log is given in Appendix B. The Slowly Increasing Steer Test Worksheet is given in Appendix C. Appendix D contains time history plots for the 50 mph runs and any runs which resulted in two-wheel lift. There was no two-wheel lift at any test condition for the 2020 Subaru Outback.

APPENDIX A

Photographs

LIST OF FIGURES

	Page
A1. Window Sticker.....	A-3
A2. Front View, Test Vehicle as Delivered	A-4
A3. Rear View, Test Vehicle as Delivered	A-5
A4. Front View, Test Vehicle in Test Condition	A-6
A5. Rear View, Test Vehicle in Test Condition	A-7
A6. Certification Label.....	A-8
A7. Tire Placard	A-9
A8. Instrumentation in Test Vehicle	A-10
A9. Steering Controller and Computer	A-11
A10. Ballast Condition.....	A-12

OUTBACK®

VIN 4S4BTANC2L314
 Model/Code 2020 SUBARU OUTBACK LIMITED/LD
 Port/Assembly LAFAYETTE, IN
 Deliver by/Carrier TRUCK / 605-601126



GOVERNMENT 5-STAR SAFETY RATINGS

Overall Vehicle Score **Not Rated**
 Based on the combined ratings of frontal, side and rollover. Should ONLY be compared to other vehicles of similar size and weight.

Frontal	Driver	Not Rated
Crash	Passenger	Not Rated

Based on the risk of injury in a frontal impact. Should ONLY be compared to other vehicles of similar size and weight.

Side	Front seat	Not Rated
Crash	Rear seat	Not Rated

Based on the risk of injury in a side impact.

Rollover	Not Rated
-----------------	------------------

Based on the risk of rollover in a single-vehicle crash.

Star ratings range from 1 to 5 stars (★★★★★) with 5 being the highest.
 Source: National Highway Traffic Safety Administration (NHTSA)
www.safercar.gov or 1-888-327-4236

Protect Your Investment!

Subaru Added Security®™
 The Only Extended Service Agreement Backed By Subaru

- Protection designed to fit your driving needs, up to 10 years/100,000 miles of coverage
- Maintenance plans also available
- We use Genuine Subaru replacement parts - only the best
- We use technicians trained by Subaru - those who know your vehicle best
- Towing, rental and trip interruption benefits available
- Transferable to the next owner

Ask your sales representative for more details.
 Accept nothing less than Added Security®

STANDARD EQUIPMENT

SAFETY
 Symmetrical All-Wheel Drive w/ Vehicle Dynamics Control
 EyeSight Driver-Assist System w/ Automatic Emergency Braking
 Advanced Adaptive Cruise Control w/ Lane Centering
 Lane Departure and Sway Warning
 Rear Vision Camera w/ Adaptive Guidelines
 Blind Spot Detection with Rear Cross-Traffic Alert
 4-Wheel Anti-Lock (ABS) Disc Brakes w/ Brake Assist
 Subaru Advanced Frontal Airbag System
 Driver Knee Airbag, Passenger Seat Cushion Airbags
 Side Curtain Airbags with Rollover Sensor and Seat Side Airbags
 3-Point Seatbelts, Front/Rear Load Limiters & Pretensioners
 LATCH System for Child Safety Seats
 Anti-Theft Alarm & Immobilizer System
 Brake Override System
 Reverse Automatic Braking System (RAB)
 SUBARU STARLINK Safety Plus - 3 Years Free

PERFORMANCE AND EXTERIOR
 2.5L Direct Injection 4-Cylinder DOHC 16-Valve Boxer Engine
 Lineartronic CVT with 8-Speed Manual Mode
 Auto Start - Stop
 X-Mode, Traction Management System
 Active Torque Vectoring with Quick Ratio Steering
 Four-Wheel Independent Suspension
 8.7" Ground Clearance
 18" Aluminum Alloy Wheels: Black w/ Machine Finish
 LED Headlights w/ High Beam Assist, LED Fog Lights
 Integrated Roof Rack System with Swing in Place Crossbars

OPTIONAL EQUIPMENT AND OTHER ITEMS

Manufacturer's Suggested Retail Price	\$33,445.00
Exterior Color: Crystal Black Silica	INCLD
Full Tank of Gas	\$2,045.00
Option Package: 34	
STARLINK 11.6" Multimedia Navigation infotainment System:	
Multi-Touch High Resolution Display, Over The Air (OTA) Map Update Program 3 Years Free	
Power Moonroof w/ Slide and Tilt	
Driver Focus (Distraction Mitigation System)	
Heated Steering Wheel	\$245.00
Wireless Charger	\$159.00
Rear Bumper Cover	\$132.00
All-Weather Floor Liners	\$76.00
Sunshade	\$45.00
LED Upgrade - Dome Light	

EPA DOT Fuel Economy and Environment Gasoline Vehicle

Fuel Economy **29** MPG Small SUVs range from 18 to 120 MPG. The best vehicle rates 136 MPG.

26 **29** 33
 combined city/hwy city highway

3.4 gallons per 100 miles

You save \$500 in fuel costs over 5 years compared to the average new vehicle.

Annual fuel cost \$1,400

Fuel Economy & Greenhouse Gas Rating (tailpipe only) **6** **Smog Rating (tailpipe only)** **6**

1 6 10 Best
 This vehicle emits 308 grams CO₂ per mile. The best emits 0 grams per mile (tailpipe only). Producing and distributing fuel also creates emissions; learn more at fuelconomy.gov.

Actual results will vary for many reasons, including driving conditions and how you drive and maintain your vehicle. The average new vehicle gets 27 MPG and costs \$7,500 to fuel over 5 years. Cost estimates are based on 15,000 miles per year at \$2.70 per gallon. MPG is miles per gallon equivalent. Vehicle emissions are a significant cause of climate change and smog.

fuelconomy.gov
 Calculate personalized estimates and compare vehicles

Smartphone QR Code

PARTS CONTENT INFORMATION FOR THIS VEHICLE:
 U.S./CANADIAN PARTS CONTENT: 45%
 MAJOR SOURCES OF FOREIGN PARTS CONTENT: JAPAN: 40%

FINAL ASSEMBLY POINT: Lafayette, IN
COUNTRY OF ORIGIN: JAPAN
ENGINE: JAPAN
TRANSMISSION: JAPAN

Note: Parts content does not include final assembly, distribution, or other non-parts costs.

COMFORT, CONVENIENCE & INTERIOR
 STARLINK 11.6" Multimedia Infotainment System
 Bluetooth Hands-Free Phone Connectivity
 Harman Kardon Premium Audio System Upgrade
 SiriusXM Radio, Sports and Weather - 4 Months Free
 STARLINK Smartphone Connectivity/Apps
 SUBARU STARLINK Security Plus - 6 Months Free Trial
 Built-In 4G LTE Wi-Fi Hotspot
 Apple CarPlay and Android Auto
 Dual Front & Rear USB Ports, iPod / iPhone Connectivity
 Auto-Dimming Homelink Compass Mirror
 Leather-Trimmed Seats, Steering Wheel and Shift Knob
 10-Way Adjustable Power Driver's Seat w/ Lumbar Support
 Heated Front Seats, Heated Mirrors, Wiper De-Icer
 Dual Zone Automatic Climate Control w/ Air Filtration System
 Auto-Up/Down Front/Rear Power Windows
 Keyless Access with Push-Button Start (2 Fobs)
 60/40 Split Fold-Down Rear Seatback

LIMITED WARRANTY/ROADSIDE ASSISTANCE
 3 Years / 36,000 Miles Basic
 5 Years / 60,000 Miles Powertrain
 5 Yrs/Unlimited Mileage Rust Perforation
 3 Yrs / 36,000 24/7 Roadside Assistance
 See Owner Info Kit&Warranty For Details

Destination and Delivery \$1,010.00
Total Suggested Retail Price \$37,157.00

*iPod is a registered trademark of Apple Inc. Harmonization is a registered trademark of Harmon International Industries, Inc. Bluetooth is a registered trademark of Bluetooth SIG, Inc. TomTom is a registered trademark of TomTom International B.V. Corporation. TOPSEN is a registered trademark of JTEKT Toyoko North America Inc.

Figure A1. Window Sticker



Figure A2. Front View, Test Vehicle as Delivered



Figure A3. Rear View, Test Vehicle as Delivered



Figure A4. Front View, Test Vehicle in Test Condition



Figure A5. Rear View, Test Vehicle in Test Condition

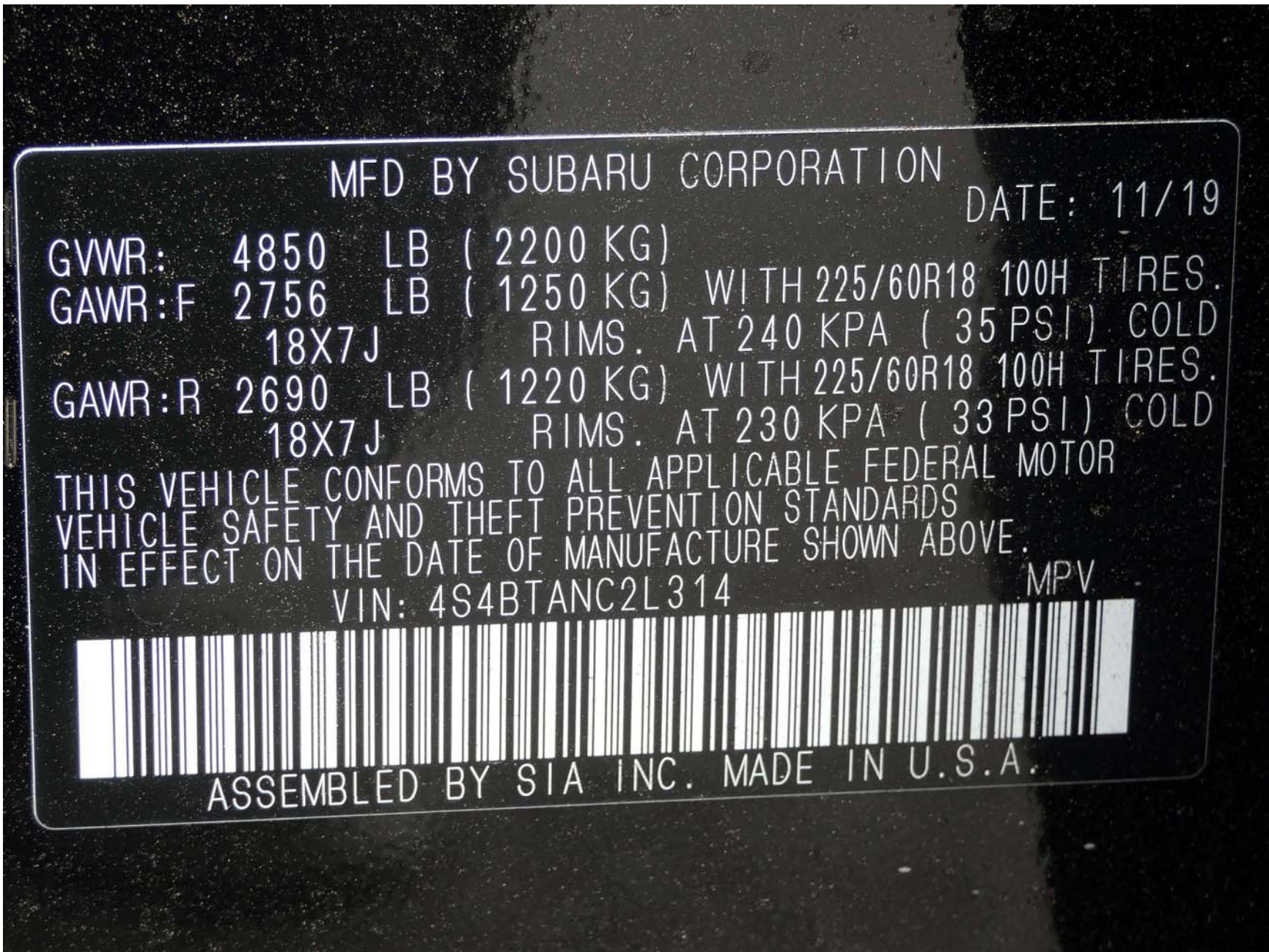


Figure A6. Certification Label



TIRE AND LOADING INFORMATION
RENSEIGNEMENTS SUR LES PNEUS ET LE CHARGEMENT

SEATING CAPACITY | TOTAL 5 | FRONT 2 | REAR 3
NOMBRE DE PLACES | AVANT 2 | ARRIERE 3

The combined weight of occupants and cargo should never exceed 408kg or 900lbs.
Le poids total des occupants et du chargement ne doit jamais dépasser 408kg ou 900lb.

TIRE PNEU	SIZE DIMENSIONS	COLD TIRE PRESSURE PRESSION DES PNEUS A FROID
FRONT AVANT	225/60R18	240 KPA, 35 PSI
REAR ARRIERE	225/60R18	230 KPA, 33 PSI
SPARE DE SECOURS	T155/80D17	420 KPA, 60 PSI

SEE OWNER'S MANUAL FOR ADDITIONAL INFORMATION
VOIR LE MANUEL DE L'USAGER POUR PLUS DE RENSEIGNEMENTS

AD

Figure A7. Tire Placard



Figure A8. Instrumentation in Test Vehicle



Figure A9. Steering Controller and Computer



Figure A10. Ballast Condition

APPENDIX B

Test Run Log

Vehicle: **2020 Subaru Outback**

Driver: **Jonathan Robel**

Test Date: **1/23/2020**

Run Number	Test Type	Speed (mph)	Handwheel Angle (deg)	Dir. of First Steer	2 Wheel Lift	Notes
1	Tire Warm-Up	35	40	Right	NA	
2	"	"	60	"	"	
3	"	"	"	"	"	
4	"	"	"	"	"	
5	2x SWA last cycle	"	"	"	"	
6	Static	0	0			
7	Steady State	50	0			
8	Slowly Increasing Steer	50	50	Left	"	
9	"	"	40	Left	"	
10	"	"	"	Left	"	
11	"	"	"	Left	"	
12	"	"	"	Right	"	
13	"	"	"	Right	"	
14	"	"	"	Right	"	
15	Fishhook 6.5 Scalar	35	170	Left	No	
16	"	40			"	
17	"	45			"	
18	"	47.5			"	

Run Number	Test Type	Speed (mph)	Handwheel Angle (deg)	Dir. of First Steer	2 Wheel Lift	Notes
19	"	50			"	
20	Fishhook 5.5 Scalar	45	144	Left	No	
21	"	47.5			"	
22	"	50			"	
					"	
23	Fishhook 6.5 Scalar	35	170	Right	No	
24	"	40			"	
25	"	45			"	
26	"	47.5			"	
27	"	50			"	
28	Fishhook 5.5 Scalar	45	144	Right	No	
29	"	47.5			"	
30	"	50			"	

APPENDIX C

Slowly Increasing Steer Test Worksheet

NCAP, 2020 Subaru Outback AWD, Multi-Passenger Load, Test Date: 1/23/2020

SIS_out_v2

Run	Dir of Steer	Start Speed (mph)	End Speed (mph)	Speed Red. (%)	Index of ay @ 0.3g	HW Angle (deg) at 0.3g	ay (g) @ 0.3g index	6.5x HW Angle (deg)	Ramp Time (sec) at 6.5x	5.5x HW Angle (deg)	Ramp Time (sec) at 5.5x	R2	Zero Begin Index	Zero End Index
9	1	50.2	0.4	99.2	1178	-25.1	-0.303	-163.3	-0.2268	-138.2	-0.1919	0.9978	600	800
10	1	50	0.2	99.7	1181	-25.3	-0.299	-164.7	-0.2288	-139.4	-0.1936	0.9979	600	800
11	1	49.5	0.1	99.9	1180	-25.2	-0.305	-164.1	-0.2279	-138.8	-0.1928	0.9961	601	800
12	0	49.7	0.0	100	1212	27.3	0.298	177.2	0.2460	149.9	0.2082	0.9989	600	800
13	0	50.1	3.3	93.5	1206	26.9	0.303	174.6	0.2424	147.7	0.2051	0.9976	600	800
14	0	50.1	0.8	98.5	1210	27.1	0.301	176.2	0.2448	149.1	0.2071	0.9988	601	800

Mean: 26.2 0.302 170 0.236 144 0.2

Steering Controller Input Values

Scalar 6.5 values:

Initial HW angle: 170 deg
 Initial time: 0.236 s
 Reversal HW angle: -170 deg
 Reversal time: 0.472 s

Scalar 5.5 values:

Initial HW angle: 144 deg
 Initial time: 0.2 s
 Reversal HW angle: -144 deg
 Reversal time: 0.4 s

APPENDIX D

Time History Plots

LIST OF FIGURES

	Page
D1. Vehicle Speed, Handwheel Angle, and Roll Angle Time History Plots for Default Test Series, L-R, 50 mph	D-3
D2. Steering Machine Operation Time History Plots for Default Test Series, L-R, 50 mph.....	D-4
D3. Yaw Rate, Roll Rate, and Lateral Acceleration Time History Plots for Default Test Series, L-R, 50 mph	D-5
D4. Pitch Rate and Longitudinal Acceleration Time History Plots for Default Test Series, L-R, 50 mph	D-6
D5. Vehicle Speed, Handwheel Angle, and Roll Angle Time History Plots for Default Test Series, R-L, 50 mph	D-7
D6. Steering Machine Operation Time History Plots for Default Test Series, R-L, 50 mph	D-8
D7. Yaw Rate, Roll Rate, and Lateral Acceleration Time History Plots for Default Test Series, R-L, 50 mph	D-9
D8. Pitch Rate and Longitudinal Acceleration Time History Plots for Default Test Series, R-L, 50 mph	D-10
D9. Vehicle Speed, Handwheel Angle, and Roll Angle Time History Plots for Supplemental 2 Test Series, L-R, 50 mph.....	D-11
D10. Steering Machine Operation Time History Plots for Supplemental 2 Test Series, L-R, 50 mph.....	D-12
D11. Yaw Rate, Roll Rate, and Lateral Acceleration Time History Plots for Supplemental 2 Test Series, L-R, 50 mph.....	D-13
D12. Pitch Rate and Longitudinal Acceleration Time History Plots for Supplemental 2 Test Series, L-R, 50 mph.....	D-14
D13. Vehicle Speed, Handwheel Angle, and Roll Angle Time History Plots for Supplemental 2 Test Series, R-L, 50 mph.....	D-15
D14. Steering Machine Operation Time History Plots for Supplemental 2 Test Series, R-L, 50 mph.....	D-16
D15. Yaw Rate, Roll Rate, and Lateral Acceleration Time History Plots for Supplemental 2 Test Series, R-L, 50 mph.....	D-17
D16. Pitch Rate and Longitudinal Acceleration Time History Plots for Supplemental 2 Test Series, R-L, 50 mph.....	D-18

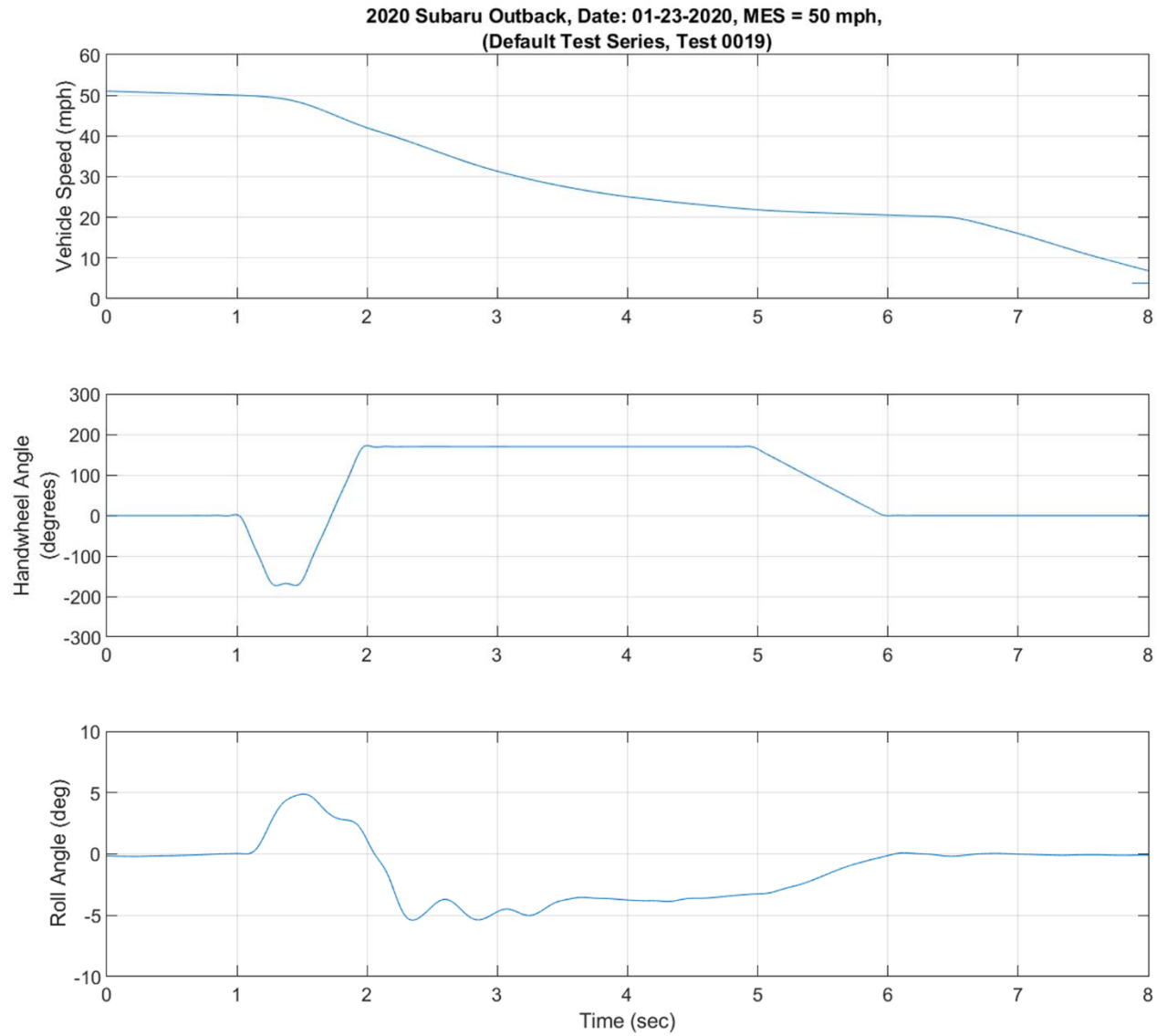


Figure D1. Vehicle Speed, Handwheel Angle, and Roll Angle Time History Plots for Default Test Series, L-R, 50 mph

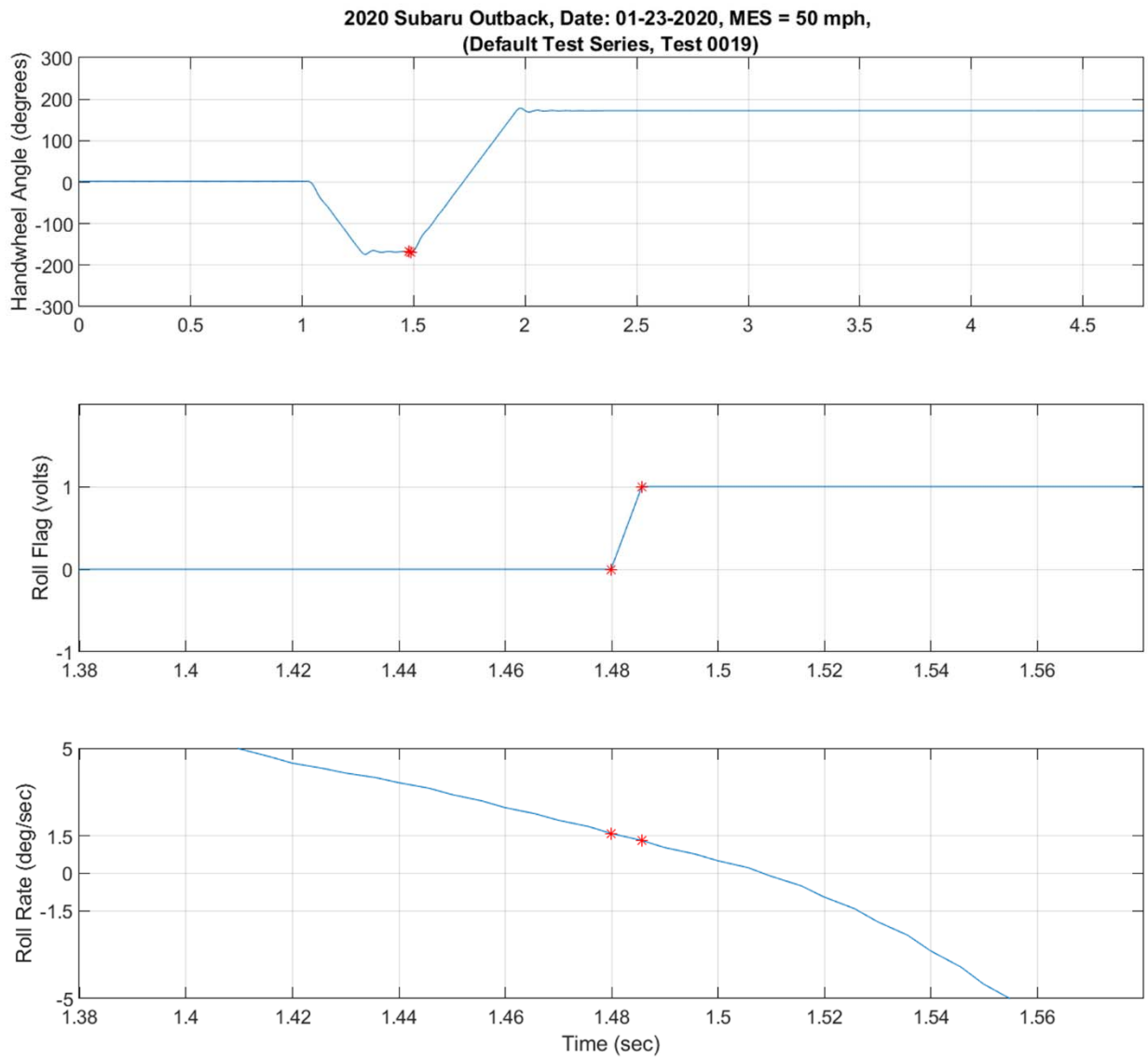


Figure D2. Steering Machine Operation Time History Plots for Default Test Series, L-R, 50 mph

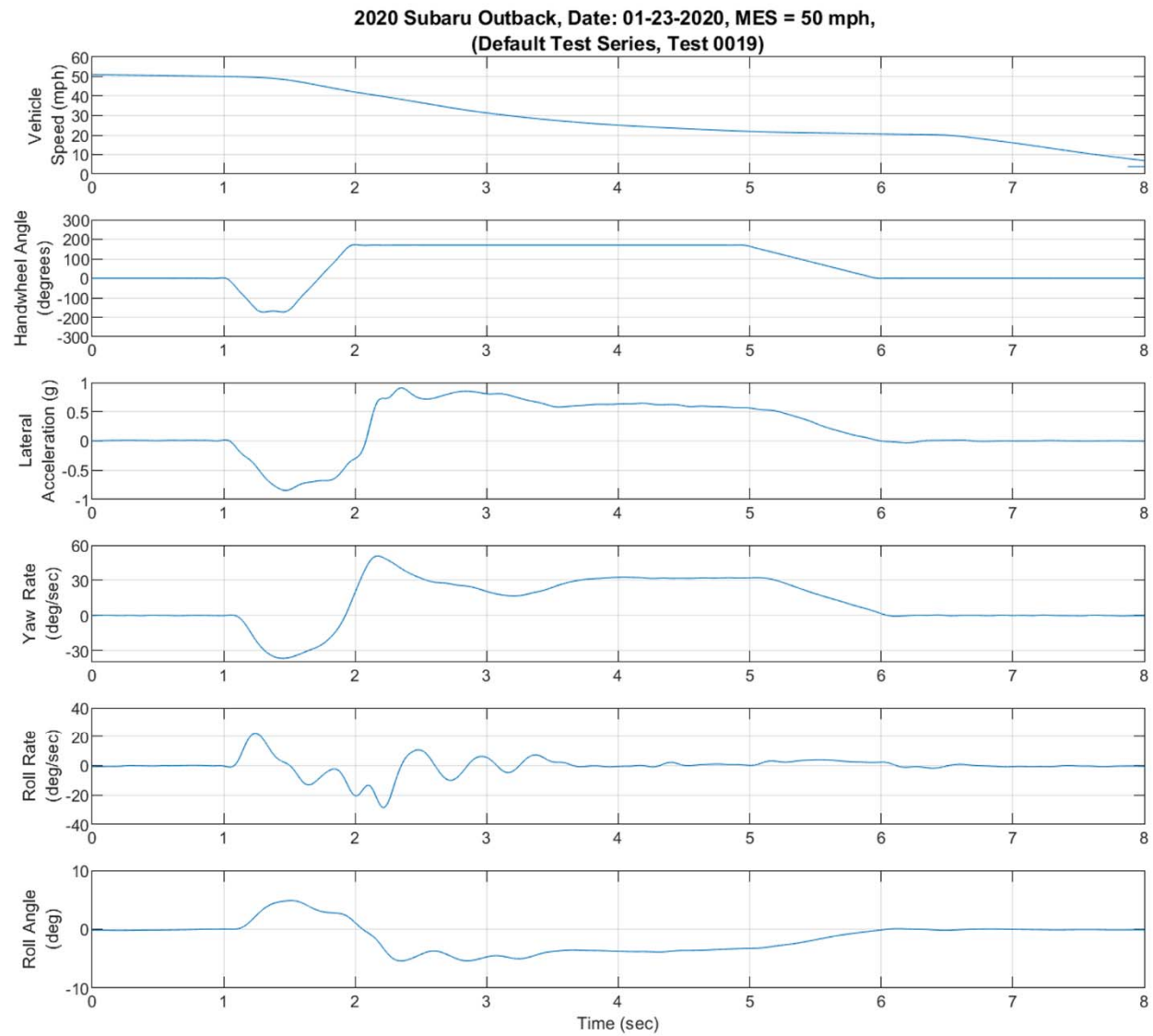


Figure D3. Yaw Rate, Roll Rate, and Lateral Acceleration Time History Plots For Default Test Series, L-R, 50 mph

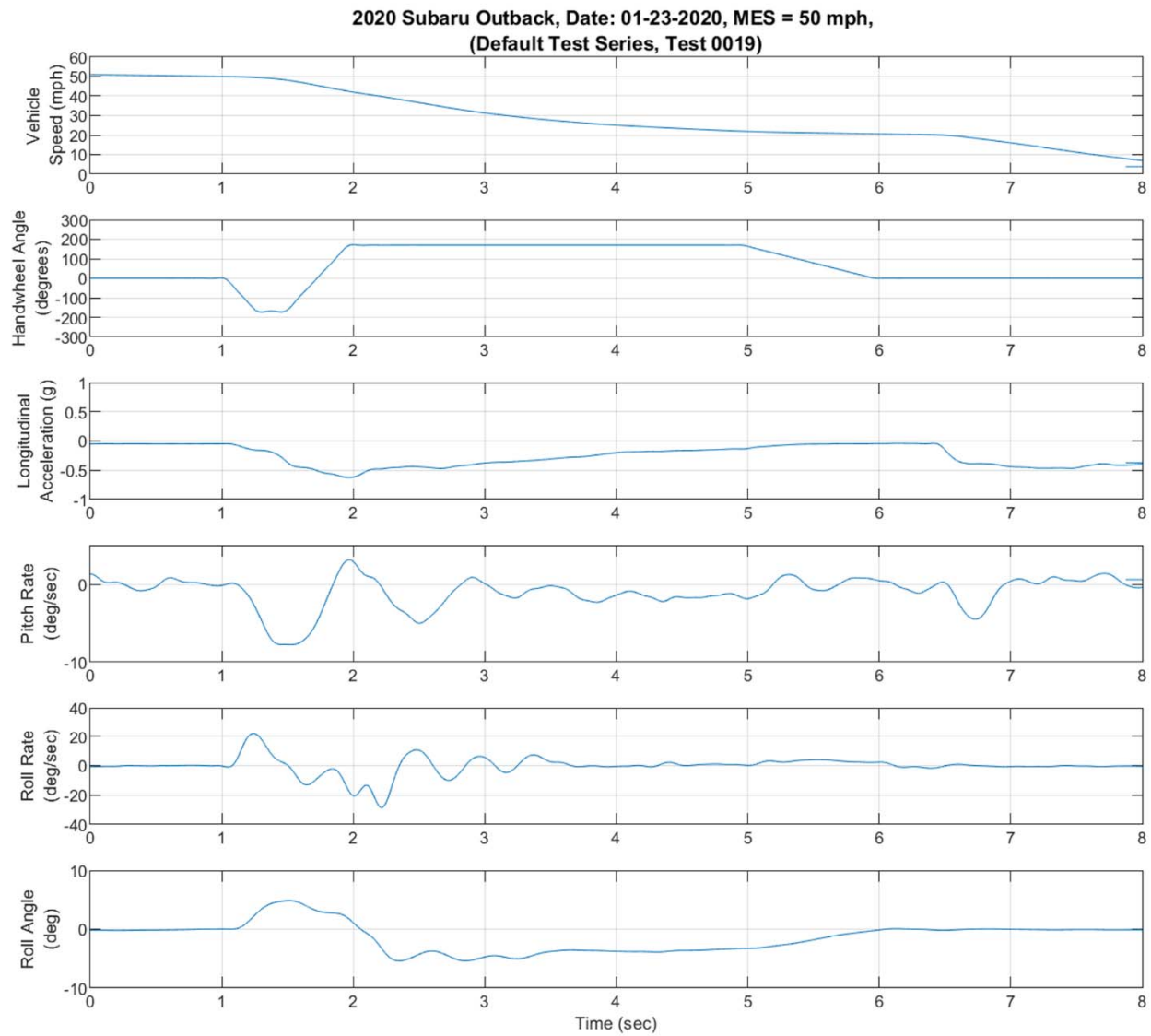


Figure D4. Pitch Rate and Longitudinal Acceleration Time History Plots for Default Test Series, L-R, 50 mph

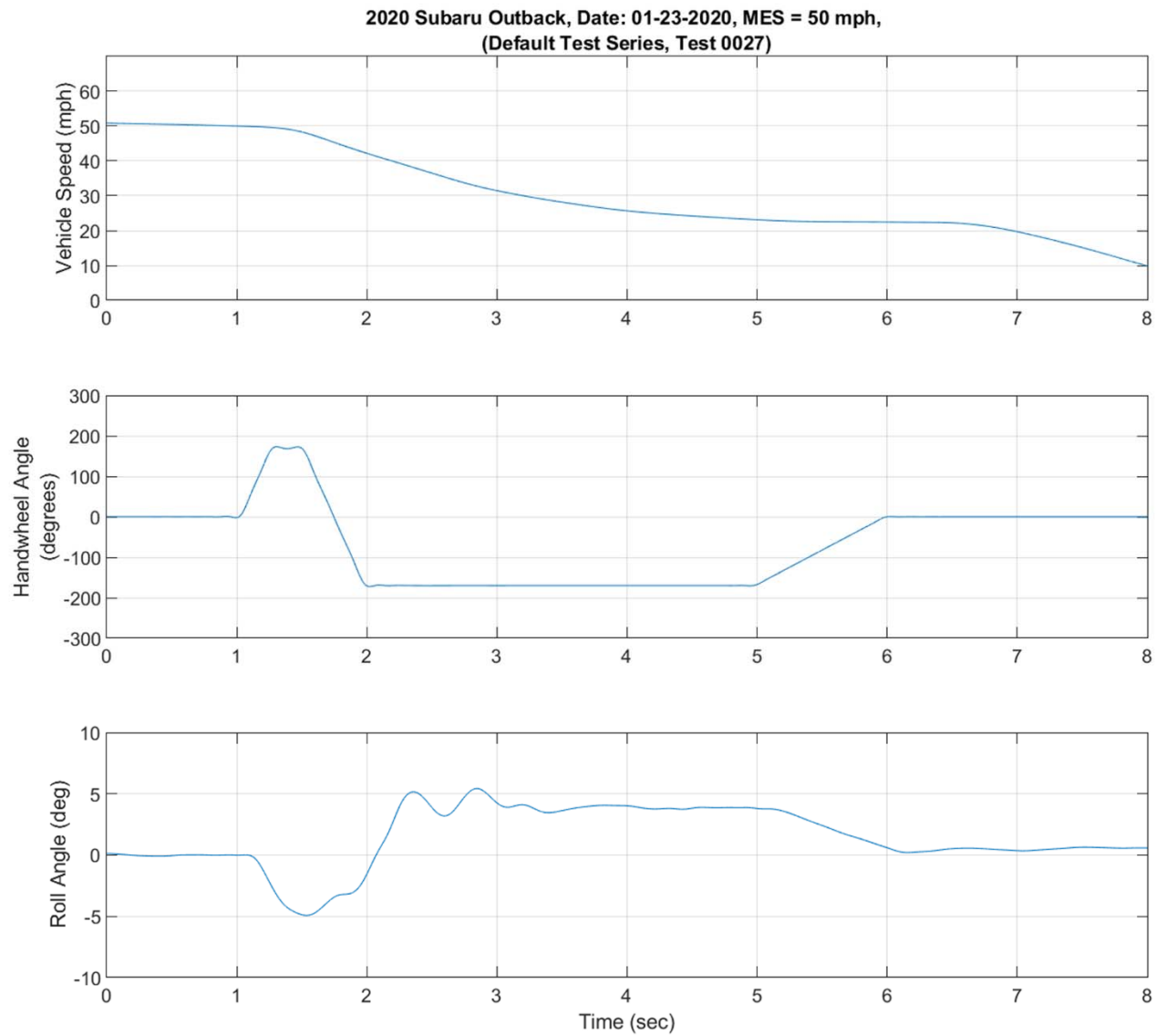


Figure D5. Vehicle Speed, Handwheel Angle, and Roll Angle Time History Plots for Default Test Series, R-L, 50 mph

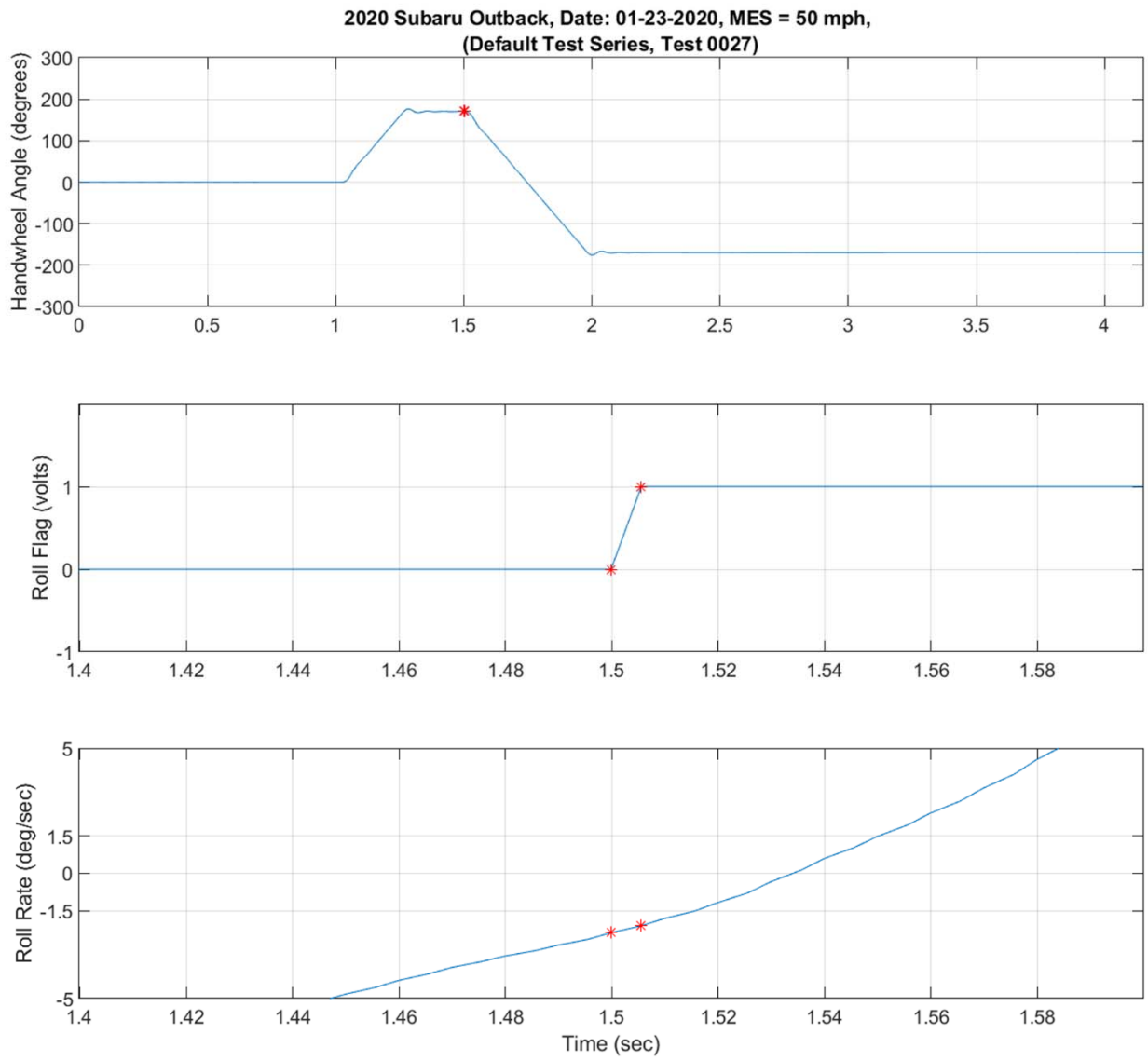


Figure D6. Steering Machine Operation Time History Plots for Default Test Series, R-L, 50 mph

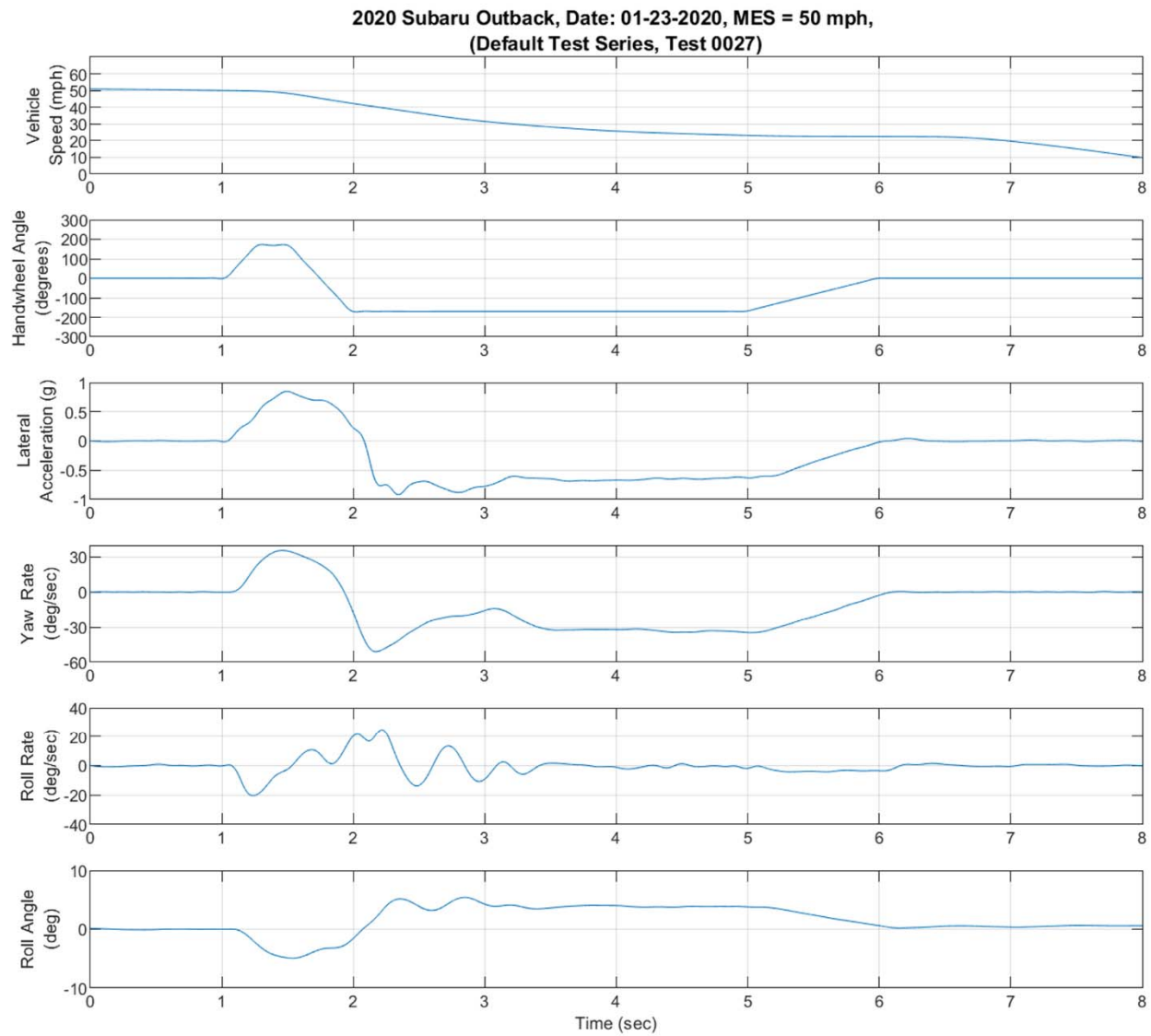


Figure D7. Yaw Rate, Roll Rate, and Lateral Acceleration Time History Plots for Default Test Series, R-L, 50 mph

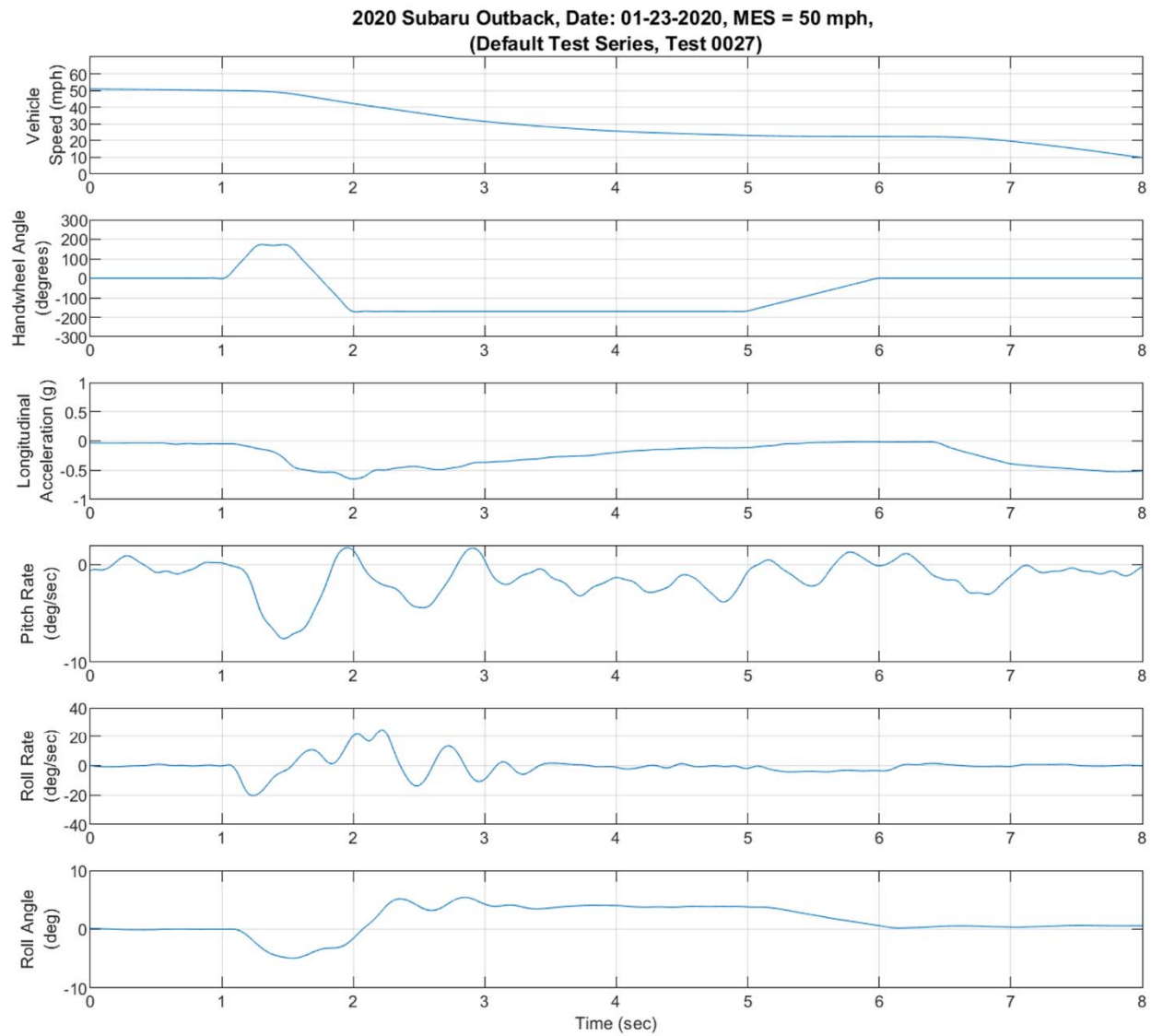


Figure D8. Pitch Rate and Longitudinal Acceleration Time History Plots or Default Test Series, R-L, 50 mph

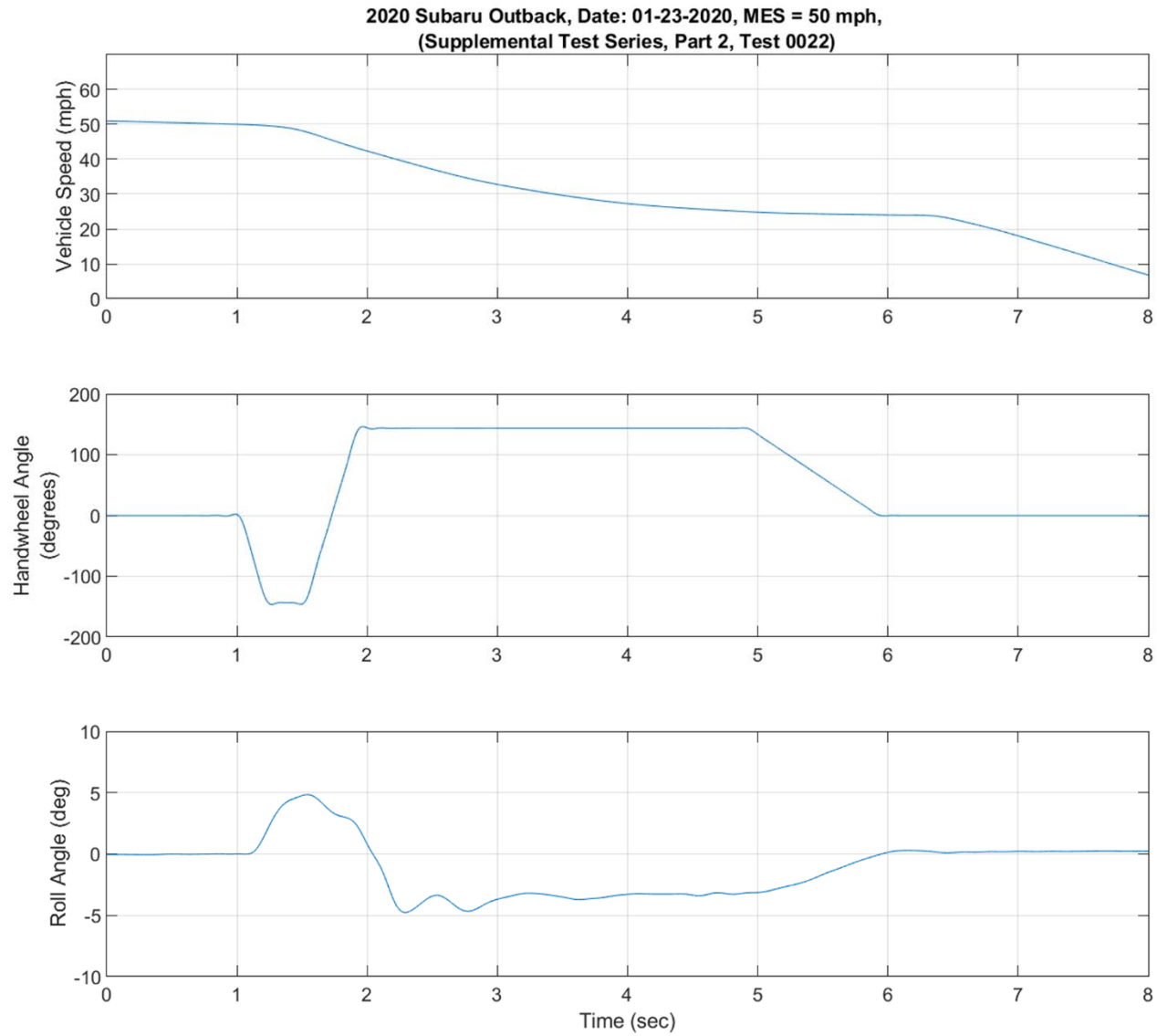


Figure D9. Vehicle Speed, Handwheel Angle, and Roll Angle Time History Plots for Supplemental 2 Test Series, L-R, 50 mph

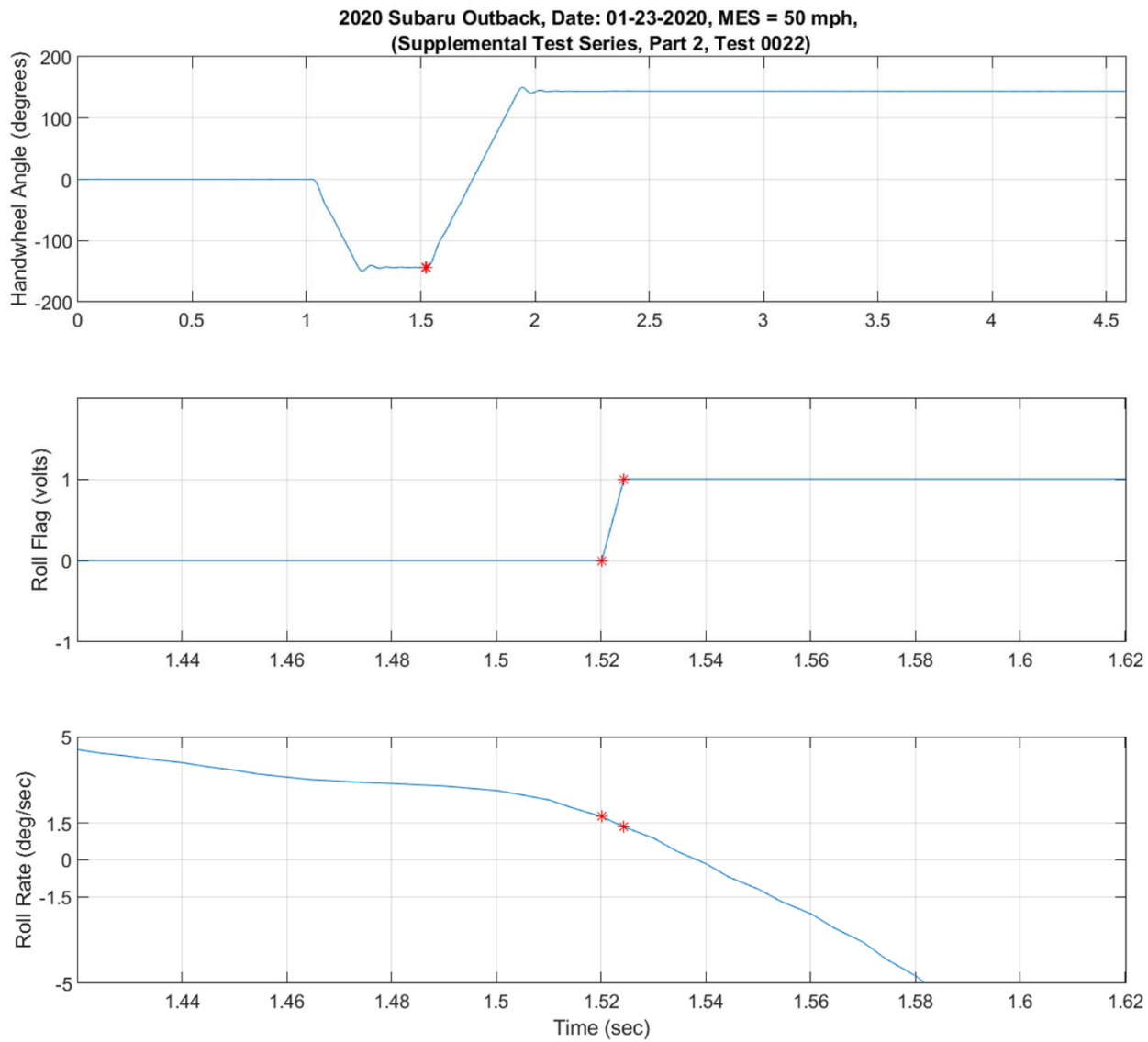


Figure D10. Steering Machine Operation Time History Plots for Supplemental 2 Test Series, L-R, 50 mph

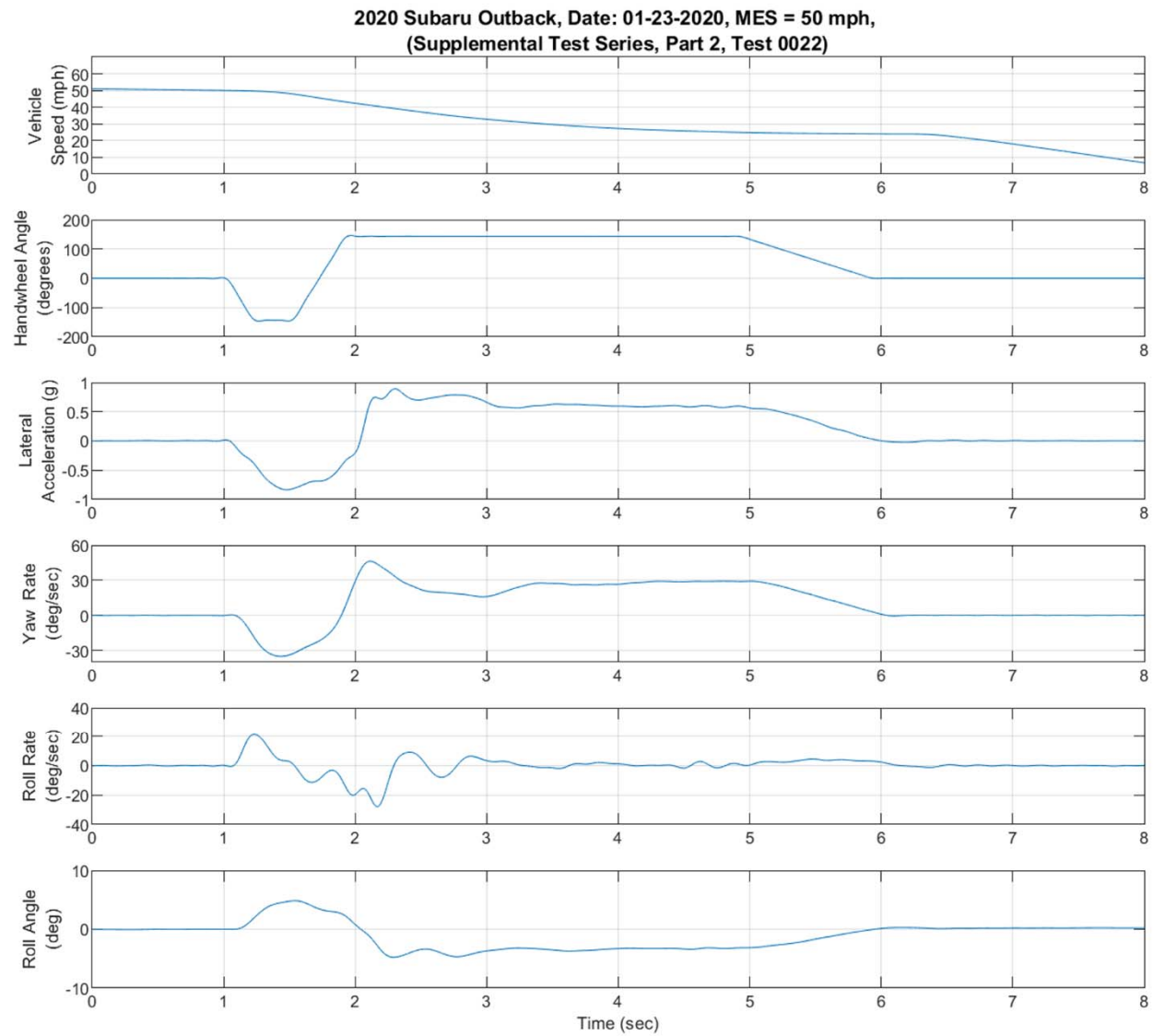


Figure D11. Yaw Rate, Roll Rate, and Lateral Acceleration Time History Plots for Supplemental 2 Test Series, L-R, 50 mph

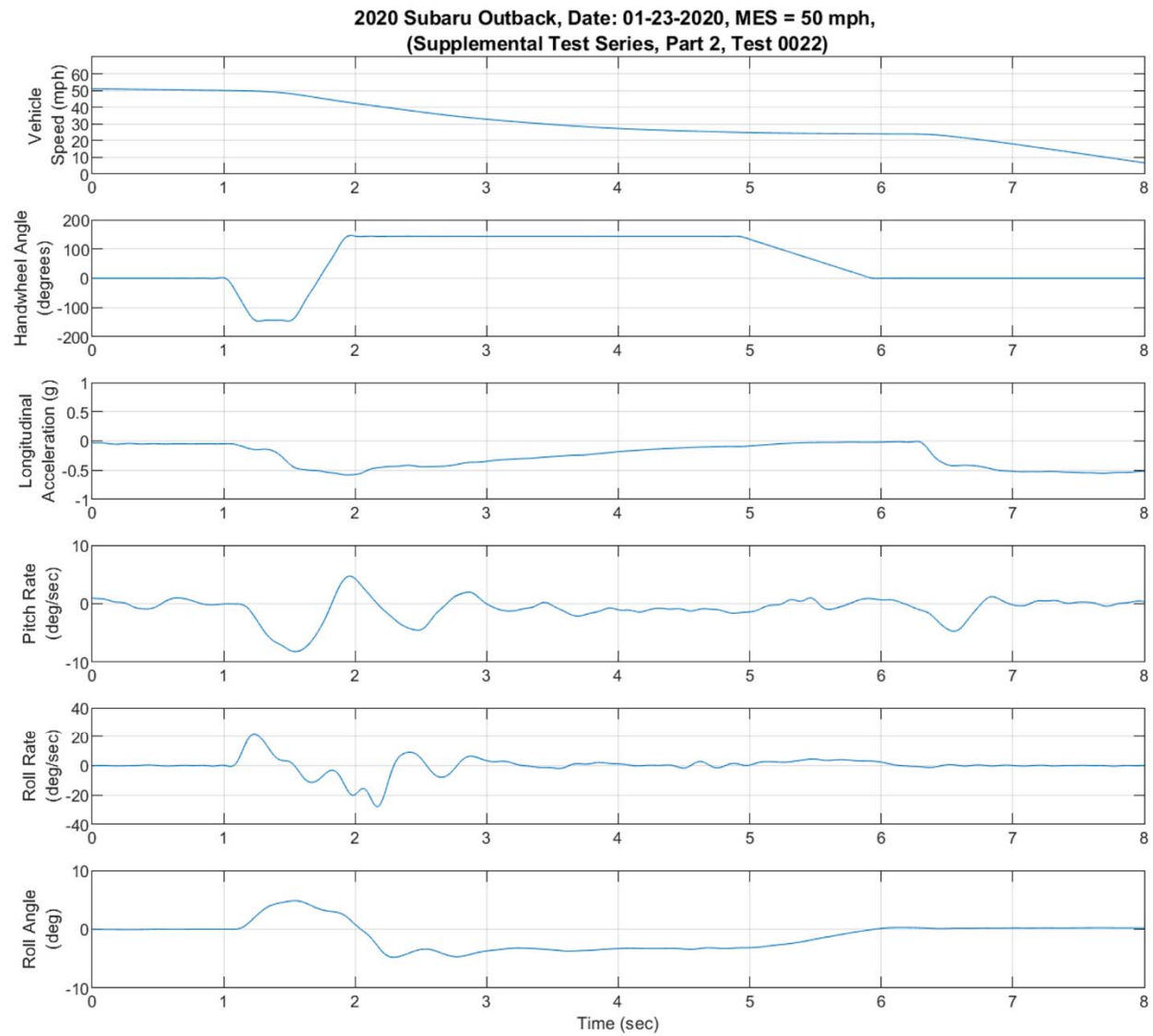


Figure D12. Pitch Rate and Longitudinal Acceleration Time History Plots for Supplemental 2 Test Series, L-R, 50 mph

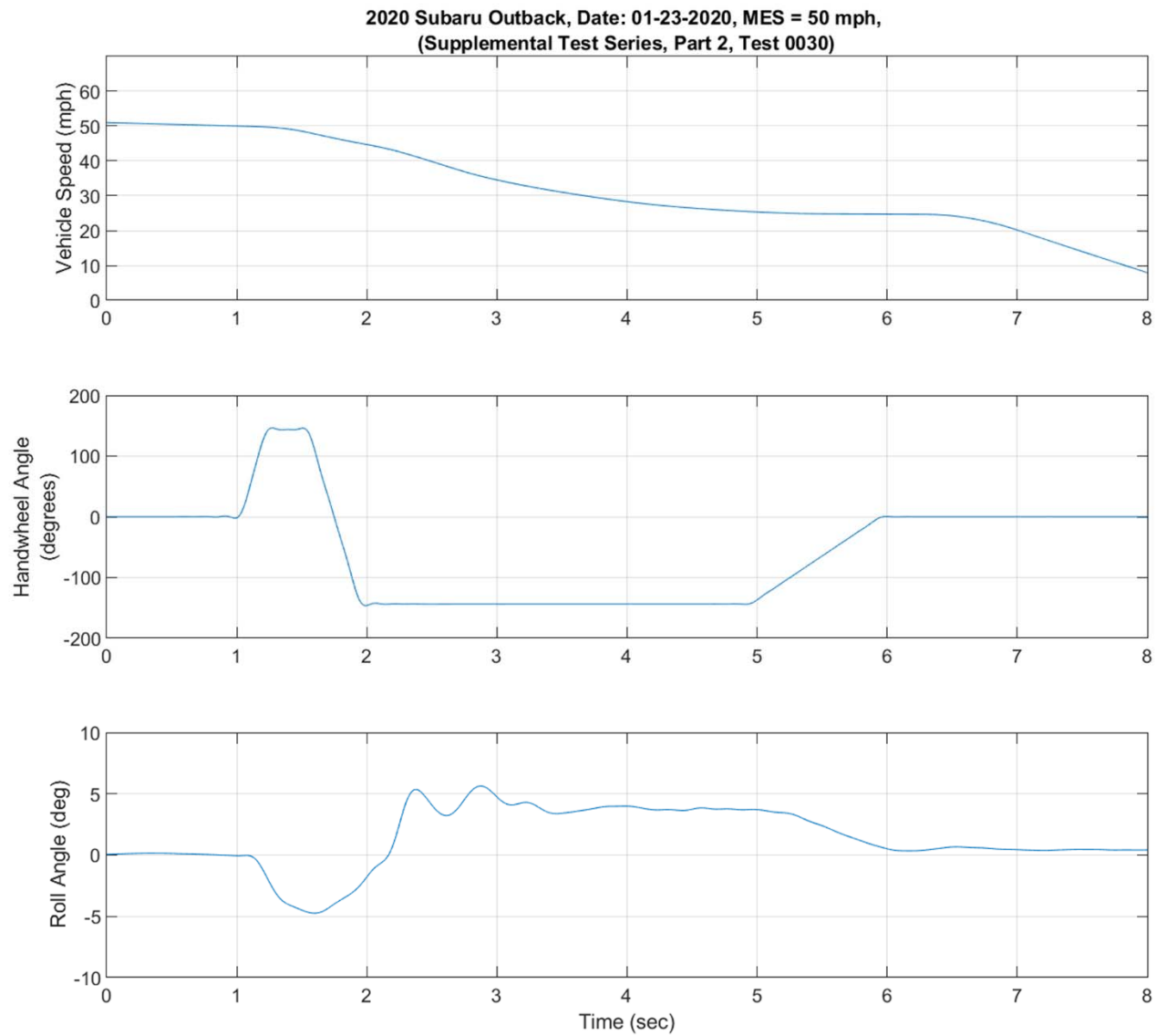


Figure D13. Vehicle Speed, Handwheel Angle, and Roll Angle Time History Plots for Supplemental 2 Test Series, R-L, 50 mph

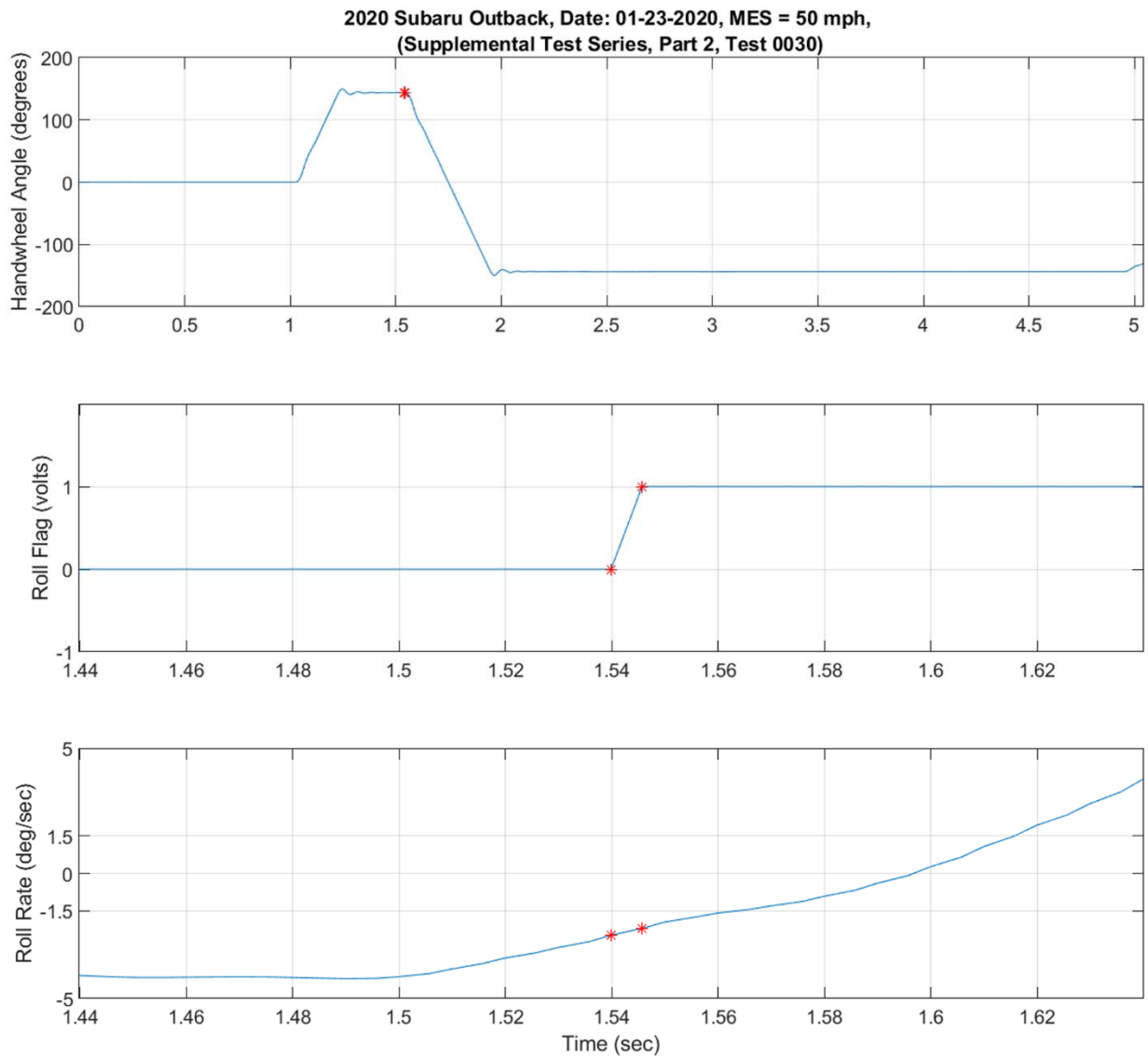


Figure D14. Steering Machine Operation Time History Plots for Supplemental 2 Test Series, R-L, 50 mph

2020 Subaru Outback, Date: 01-23-2020, MES = 50 mph,
(Supplemental Test Series, Part 2, Test 0030)

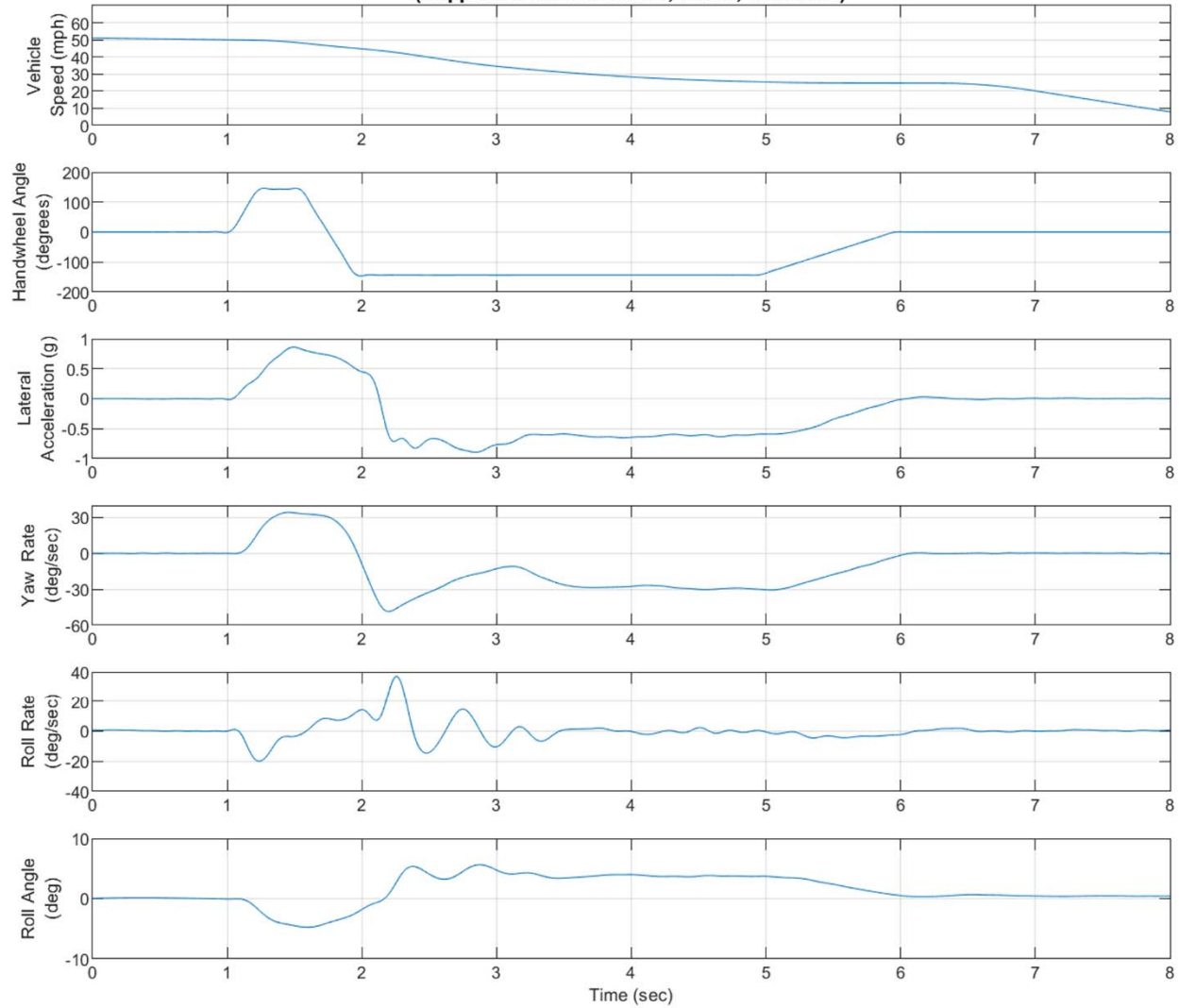


Figure D15. Yaw Rate, Roll Rate, and Lateral Acceleration Time History Plots for Supplemental 2 Test Series, R-L, 50 mph

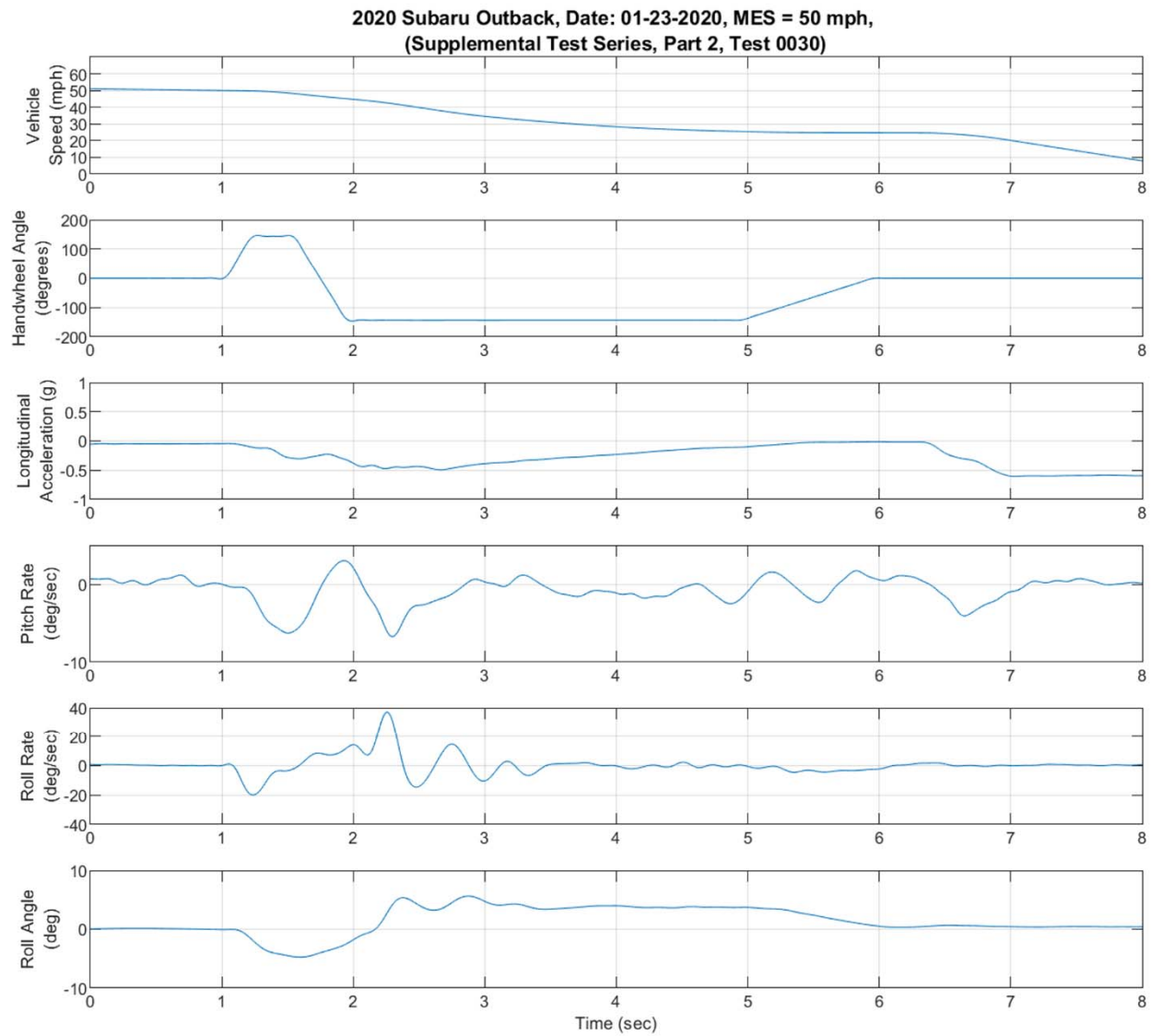


Figure D16. Pitch Rate and Longitudinal Acceleration Time History Plots for Supplemental 2 Test Series, R-L, 50 mph