



24 January 2020

U.S. Department of Transportation
National Highway Traffic Safety Administration
Docket Section
400 Seventh Street SW
Washington, DC 20590

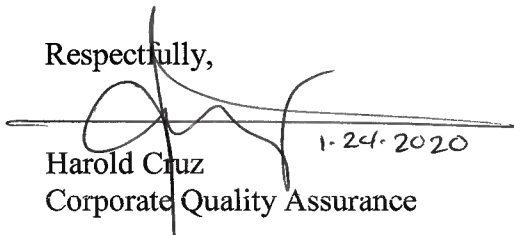
RE: New Pneumatic Tires for Motor Vehicles with a GVWR More Than 4,536 Kilograms (10,000 Pounds)

Pursuant to 49 CFR Ch 5 §571.119 Standard No. 119 Yokohama Tire Corporation (YTC), on behalf of Yokohama Rubber Company, advises that it will manufacture and distribute a 1200R20 18 PR (J) Yokohama brand truck/bus tire in the Y772M tread design for use and service in the United States market. This tire is designed to carry maximum loads currently not listed in the 2019 Year Book of the Tire and Rim Association as indicated in the attached tire specification table. This information has been prepared and will be provided to users of this product with sufficient information to permit their proper selection and safe operational performance.

All its descriptive and specification literature is prepared in both print and electronic formats for customer access and use.

If any further detail or clarification of this provided information is required, please direct any inquiry to me here at the corporate office address, by phone at 800-423-4544, extension 3836, or via internet email at harold.cruz@yokohamatire.com.

Respectfully,

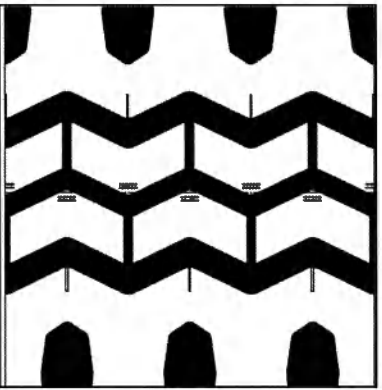

Harold Cruz
Corporate Quality Assurance

1-24-2020

Attachment: Tire Specification Chart-Yokohama 1200R20 18 PR (J) Y772M

ES20-000279

Y772M



Specifications

Tire Size	Ply Rating (L.R.)	Rim Size		Inflated Dimensions		Groove Depth (1/32inch)	Loaded Dimensions			Load Capacity at Cold Inflation Pressure			
		Meas. [inch]	Alt. [inch]	Overall Width [inch]	Overall Diameter [inch]		Section Width [inch]	Static Radius [inch]	PRM	lb/psi Single	lb/psi Dual	kg/kPa Single	kg/kPa Dual
1200R20	18	8.50	8.50,9.00	12.0	44.0	20	13.2	20.5	475	8270/120	7160/120	3750/830	3250/830

Load Limits at various Inflation Pressure

Inflation Pressure[psi]	70	75	80	85	90	95	100	105	110	115	120
Dual Load[lbs]	4905	5160	5410	5650	5880	6105	6325	6545	6755	6960	7160
Single Load[lbs]	5665	5960	6245	6525	6790	7055	7310	7555	7800	8035	8270