



DEPARTMENT OF  
TRANSPORTATION

2020 JAN 14 P 2:15

DOCKET OPERATIONS

09 January 2020

U.S. Department of Transportation  
National Highway Traffic Safety Administration  
Docket Section  
400 Seventh Street SW  
Washington, DC 20590

RE: New Pneumatic Tires for Motor Vehicles with a GVWR More Than 4,536  
Kilograms (10,000 Pounds)

Pursuant to 49 CFR Ch 5 §571.119 Standard No. 119 Yokohama Tire Corporation (YTC), on behalf of Yokohama Rubber Company, advises the manufacture and distribution of the following Yokohama brand truck/bus tire sizes below in the RY023 tread design for use and service in the United States market:

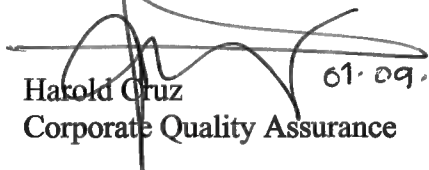
- 235/75R17.5 14 PR
- 235/75R17.5 16 PR
- 215/75R17.5 14 PR
- 215/75R17.5 16 PR

These tire sizes are designed to carry maximum loads and inflation pressure that are not listed in the current Year Book of the Tire and Rim Association and/or The European Tyre and Rim Technical Organization as indicated in the attached tire specification tables. This information has been prepared and will be provided to users of these tire sizes with sufficient information to permit their proper selection and safe operational performance.

These tire sizes will be available for sale and distribution in the U.S. market and all descriptive and specification literatures are prepared in both print and electronic formats for customer access and use prior to the tire sale.

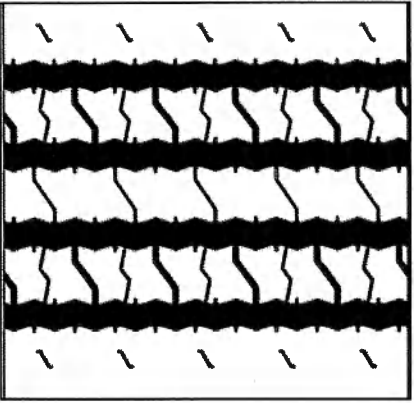
If any further detail or clarification of this provided information is required, please direct any inquiry to me here at the corporate office address, by phone at 800-423-4544, extension 3836, or via internet email at [harold.cruz@yokohamatire.com](mailto:harold.cruz@yokohamatire.com).

Respectfully,

  
Harold Cruz  
Corporate Quality Assurance  
01-09-2020

Attachment: Tire Specification Charts-Yokohama 235/75R17.5 14PR RY023  
235/75R17.5 16PR RY023, 215/75R17.5 14PR RY023, and 215/75R17.5 16PR RY023.

## RY023



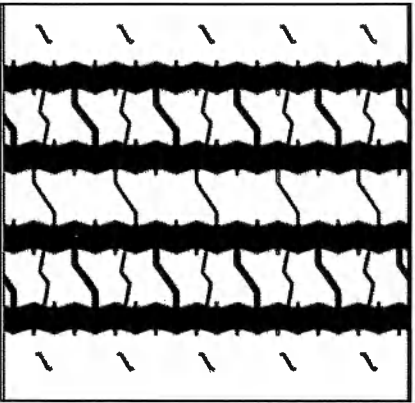
### Specifications

Tire Size	Ply Rating (L.R.)	Rim Size		Inflated Dimensions		Groove Depth (1/32inch)	Loaded Dimensions				Load Capacity at Cold Inflation Pressure			
		Meas. [inch]	Alt. [inch]	Overall Width [inch]	Overall Diameter [inch]		Section Width [inch]	Static Radius [inch]	PRM	lb/psi Single	lb/psi Dual	kg/kPa Single	kg/kPa Dual	
235/75R17.5	14	6.75	6.75, 7.50	9.4	31.7	16	10.0	14.6	661	4410/110	4190/110	2000/760	1900/760	

### Load Limits at various Inflation Pressure

Inflation Pressure[psi]	55	60	65	70	75	80	85	90	95	100	105	110
Dual Load[lbs]	2580	2720	2900	3035	3210	3340	3510	3630	3795	3915	4035	4190
Single Load[lbs]	2715	2860	3055	3195	3380	3515	3695	3825	3995	4120	4245	4410

## RY023



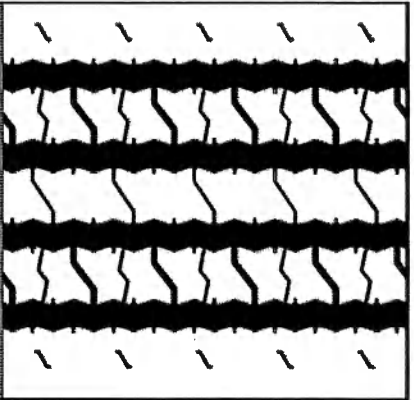
### Specifications

Tire Size	Ply Rating (L.R.)	Rim Size		Inflated Dimensions		Groove Depth (1/32inch)	Loaded Dimensions				Load Capacity at Cold Inflation Pressure			
		Meas. [inch]	Alt. [inch]	Overall Width [inch]	Overall Diameter [inch]		Section Width [inch]	Static Radius [inch]	PRM	lb/psi Single	lb/psi Dual	kg/kPa Single	kg/kPa Dual	
235/75R17.5	16	6.75	6.75/7.50	9.4	31.7	16	10.0	14.6	661	6005/125	5675/125	2725/860	2575/860	

### Load Limits at various Inflation Pressure

Inflation Pressure[psi]	70	75	80	85	90	95	100	105	110	115	120	125
Dual Load[lbs]	3775	3990	4150	4360	4515	4715	4865	5015	5205	5350	5535	5675
Single Load[lbs]	3995	4225	4395	4615	4780	4990	5150	5305	5510	5660	5860	6005

## RY023



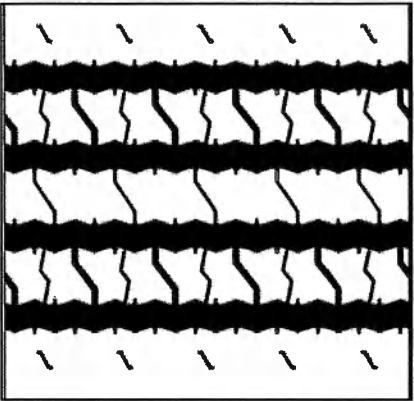
### Specifications

Tire Size	Ply Rating (L.R.)	Rim Size		Inflated Dimensions		Groove Depth (1/32inch)	Loaded Dimensions			Load Capacity at Cold Inflation Pressure			
		Meas. [inch]	Alt. [inch]	Overall Width [inch]	Overall Diameter [inch]		Section Width [inch]	Static Radius [inch]	PRM	lb/psi Single	lb/psi Dual	kg/kPa Single	kg/kPa Dual
215/75R17.5	14	6.00	6.00,6.75	8.5	30.6	16	9.1	14.6	674	3750/105	3530/105	1700/720	1600/720

### Load Limits at various Inflation Pressure

Inflation Pressure [psi]	50	55	60	65	70	75	80	85	90	95	100	105
Dual Load [lbs]	2215	2395	2525	2695	2820	2985	3105	3260	3375	3525	3640	3750
Single Load [lbs]	2085	2255	2380	2540	2655	2810	2920	3070	3175	3320	3425	3530

## RY023



### Specifications

Tire Size	Ply Rating (L.R.)	Rim Size		Inflated Dimensions		Groove Depth (1/32inch)	Loaded Dimensions			Load Capacity at Cold Inflation Pressure			
		Meas. [inch]	Alt. [inch]	Overall Width [inch]	Overall Diameter [inch]		Section Width [inch]	Static Radius [inch]	PRM	lb/psi Single	lb/psi Dual	kg/kPa Single	kg/kPa Dual
215/75R17.5	16	6.00	6.00,6.75	8.5	30.6	16	9.1	14.6	674	4805/125	4540/125	2180/860	2060/860

### Load Limits at various Inflation Pressure

Inflation Pressure[psi]	70	75	80	85	90	95	100	105	110	115	120	125
Dual Load[lbs]	3020	3195	3320	3490	3610	3775	3895	4010	4165	4280	4430	4540
Single Load[lbs]	3195	3380	3515	3690	3820	3995	4120	4245	4410	4530	4690	4805