

**Procedures for Assembly,  
Disassembly, and Inspection  
(PADI)  
of the Adult Pedestrian Headform**

December 2019

Brian Suntay  
David Hyder  
Dave Walker

*Transportation Research Center Inc.*

## Table of Contents

List of Figures.....	i
List of Tables .....	i
1. Introduction .....	1
1.1. Purpose.....	1
1.2. Part Numbers.....	1
1.3. Abbreviations.....	1
1.4. Torque Specifications.....	2
2. Construction.....	2
3. Clothing .....	2
4. Available Instrumentation .....	2
5. Procedures for Assembly, Disassembly, and Inspection .....	3
5.1. Assembly .....	4
5.2. Disassembly.....	6
5.3. Inspection .....	6
6. External Dimensions.....	7
7. Mass Measurements .....	7

## List of Figures

Figure 1. Oblique view of the adult pedestrian headform .....	1
Figure 2. Adult pedestrian headform assembly .....	3
Figure 3. Positioning of the triaxial accelerometer mount block on the back plate assembly.....	4
Figure 4. Installation of the triaxial accelerometer mount block to the back plate assembly.....	4
Figure 5. Installation of damped accelerometers to the triaxial accelerometer mount block .....	5
Figure 6. Routing of the accelerometer wires .....	5
Figure 7. Insertion of skull casting assembly into the headform flesh .....	6
Figure 8. (Left) Attachment of back plate disc; (Right) Attachment of the back plate assembly to the skull casting assembly.....	6
Figure 9. External dimensions of the adult headform.....	7

## List of Tables

Table 1. Threaded fastener abbreviations .....	2
Table 2. Adult pedestrian headform instrumentation capability.....	2
Table 3. Adult pedestrian headform components .....	3
Table 4. External dimensions of the adult headform impactor .....	7
Table 5. Mass measurements of the adult headform impactor .....	8

## **1. Introduction**

This document was prepared for the National Highway Traffic Safety Administration (NHTSA) under the title “Procedures for Assembly, Disassembly, and Inspection (PADI) of the Adult Pedestrian Headform”.

A photograph of the adult pedestrian headform is shown in Figure 1.



**Figure 1. Oblique view of the adult pedestrian headform**

### **1.1. Purpose**

This document contains the procedures for assembly and disassembly of the adult pedestrian headform for the purpose of inspection and preparation for testing. Certification tests are specified in UNECE Addendum 126 Regulation Number 127 Revision 1 Annex 6 Section 3. The details of this test are also specified in the NHTSA companion document “Qualification Procedures for Pedestrian Test Devices December 2019.” The headform user will periodically perform the qualification tests to assure that the headform is maintained at the specified performance levels.

### **1.2. Part Numbers**

All part numbers in this document refer to the drawing package entitled “Adult Pedestrian Headform Drawing Package December 2019”.

### **1.3. Abbreviations**

The abbreviations for threaded fasteners used throughout the PADI are listed in Table 1.

**Table 1. Threaded fastener abbreviations**

<b>Abbreviation</b>	<b>Description</b>
SHCS	Socket Head Cap Screw
FHCS	Flat Head Cap Screw

### 1.4. Torque Specifications

No torque requirements are specified.

### 2. Construction

Some of the design highlights of the adult pedestrian headform include:

- Cast aluminum sphere with removable vinyl skull cap skin. The vinyl skin has been tuned to produce humanlike response for impacts.
- Triaxial accelerometer mounting capability at the center of gravity.

### 3. Clothing

The adult pedestrian headform does not utilize clothing.

### 4. Available Instrumentation

The adult pedestrian headform utilizes accelerometers to measure the acceleration of the head center of gravity along the x, y, and z directions. There are two configurations of accelerometers available for use. This PADI presents a configuration in which three damped uniaxial accelerometers are installed on a mount that is attached to the headform back plate. The second configuration (not presented here) utilizes a single damped triaxial accelerometer that is attached to the headform back plate. Any damped uniaxial or triaxial accelerometer can be used as long as the dampening coefficient matches (0.7), the overall mass of the assembly remains within specification, and the accelerometer(s) can be mounted to measure at the head center of gravity. Sensors are listed in Table 2.

**Table 2. Adult pedestrian headform instrumentation capability**

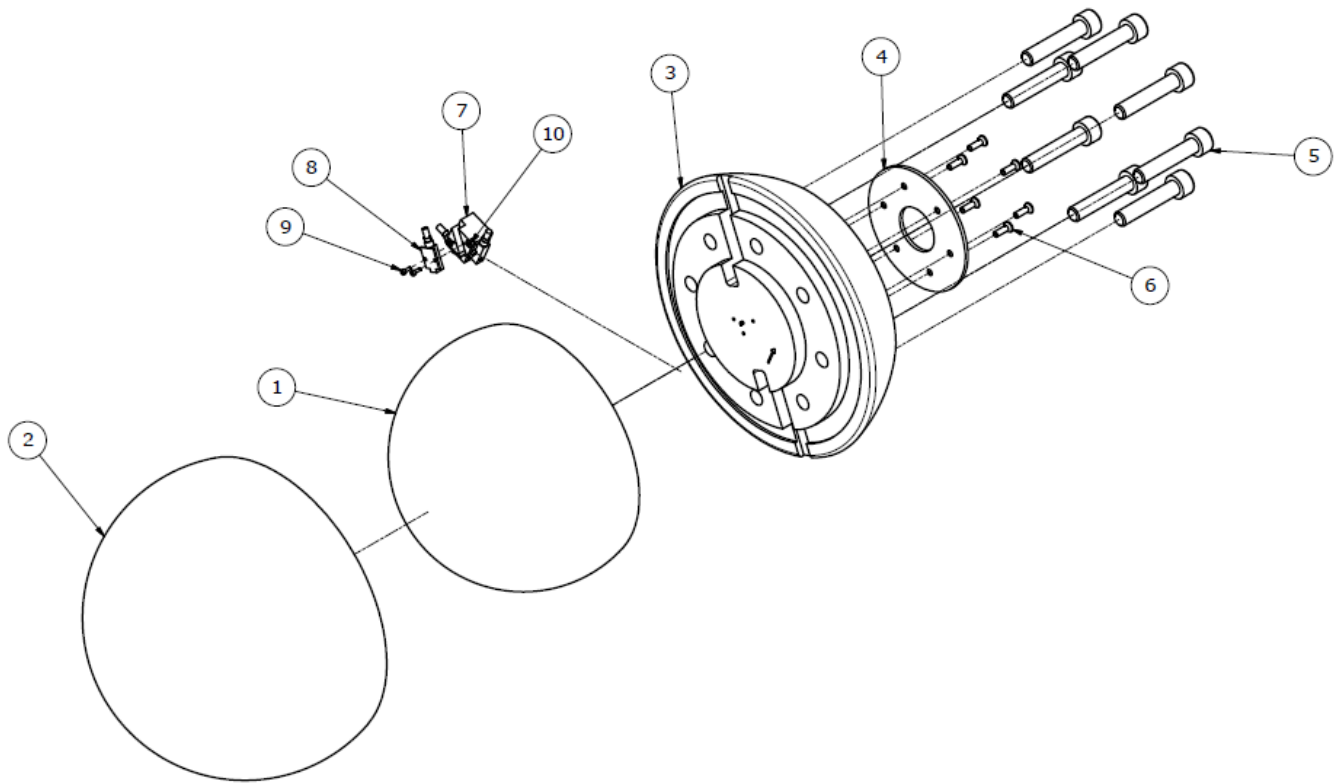
<b>Sensor Type</b>	<b>Location</b>	<b>Part #</b>	<b>Measurements</b>	<b>Total # Channels</b>
Damped uniaxial accelerometers	Head center of gravity	SA572-S5	X, Y, Z	3
Damped triaxial accelerometer		NA		

## 5. Procedures for Assembly, Disassembly, and Inspection

The components in Table 3 are included in the adult pedestrian headform assembly. Figure 2 shows a drawing of the headform assembly components with parts labeled as listed in Table 3. This assembly view and all other components can be found in the full drawing package.

**Table 3. Adult pedestrian headform components**

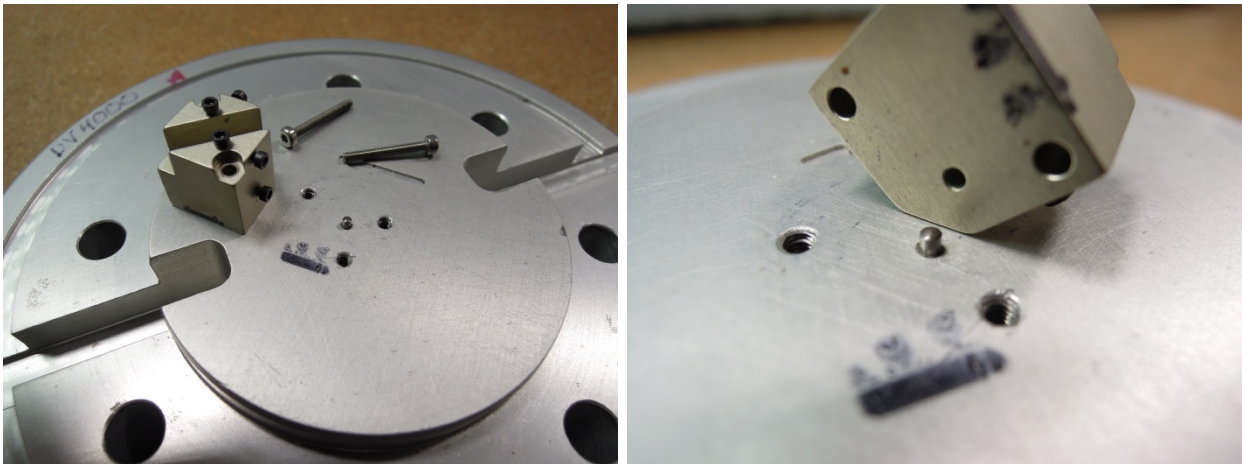
Part Description	Quantity	Part Number	Item #
Skull casting assembly	1	ADU-0200	1
Headform flesh	1	ADU-0300	2
Back plate assembly	1	ADU-0100	3
Back plate insert disc	1	ADU-0120	4
Screw, SHCS M8x1.25 x 40	8	5000374V	5
Screw, FHCS M3x0.5 x 10	6	5000203	6
Triaxial accelerometer mount block	1	ADU-0550	7
Damped uniaxial accelerometer	3	SA572-S5	8
Screw, SHCS M1.4x0.3 x 4	6	5000375	9
Screw, SHCS M2x0.4 x 12	2	5000382	10



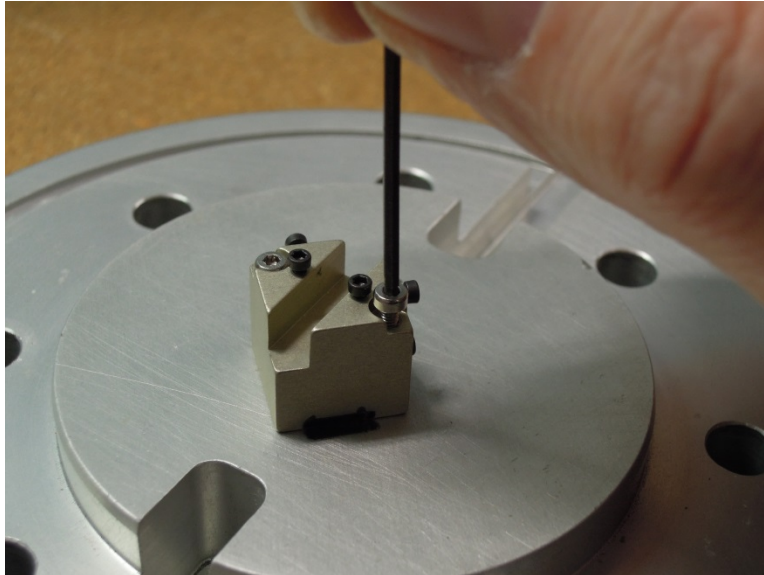
**Figure 2. Adult pedestrian headform assembly**

## 5.1. Assembly

Position the triaxial accelerometer mount block (Item 7) on the back plate assembly (Item 3) with the locating pin (Figure 3) and fasten using two SHCS M2x0.4 x 12 (Item 10) – as shown in Figure 4.

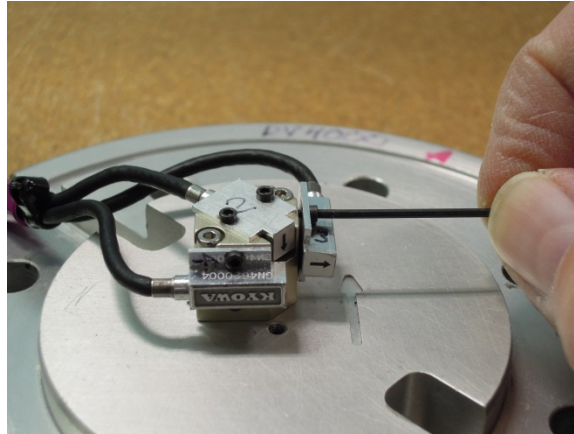


**Figure 3. Positioning of the triaxial accelerometer mount block on the back plate assembly**



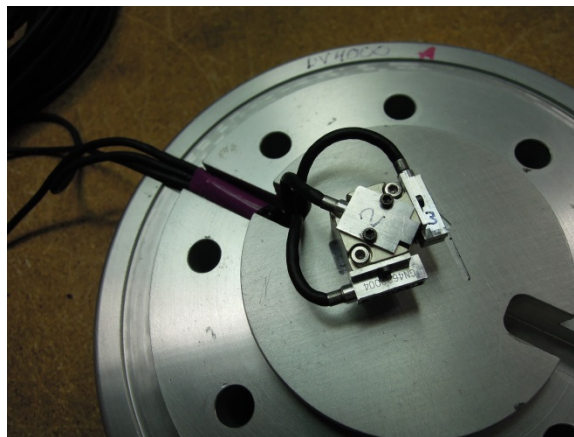
**Figure 4. Installation of the triaxial accelerometer mount block to the back plate assembly**

Install three damped uniaxial accelerometers (Item 8) to the triaxial accelerometer mount block using six SHCS M1.4x0.3 x 4 (Item 9) – as shown in Figure 5.



**Figure 5. Installation of damped accelerometers to the triaxial accelerometer mount block**

Route the accelerometer wires through the grooves in the back plate – as shown in Figure 6.



**Figure 6. Routing of the accelerometer wires**

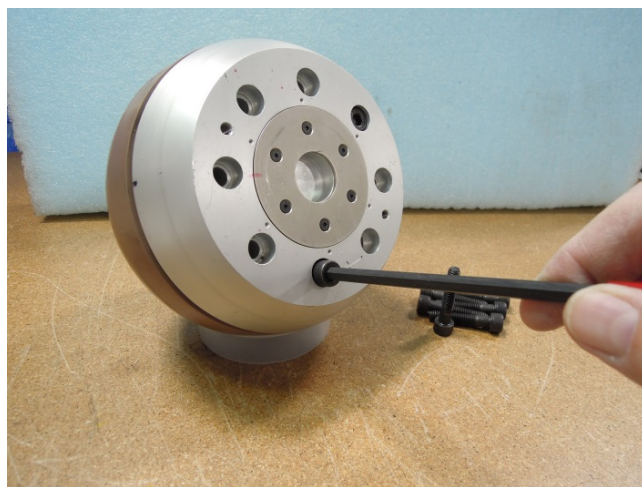
Insert the skull casting assembly (Item 1) into the headform flesh (Item 2) if it is not already attached – as shown in Figure 7.





**Figure 7. Insertion of skull casting assembly into the headform flesh**

After attaching the back plate insert disc (Item 4) to the back plate assembly using six FHCS M3x0.5 x 10 (Item 6), attach the back plate assembly to the skull casting assembly and fasten with eight SHCS M8x1.25 x 40 (Item 5) (Figure 8).



**Figure 8. (Left) Attachment of back plate disc; (Right) Attachment of the back plate assembly to the skull casting assembly**

## **5.2. Disassembly**

To disassemble the head, reverse the process described in Section 5.1 Assembly.

## **5.3. Inspection**

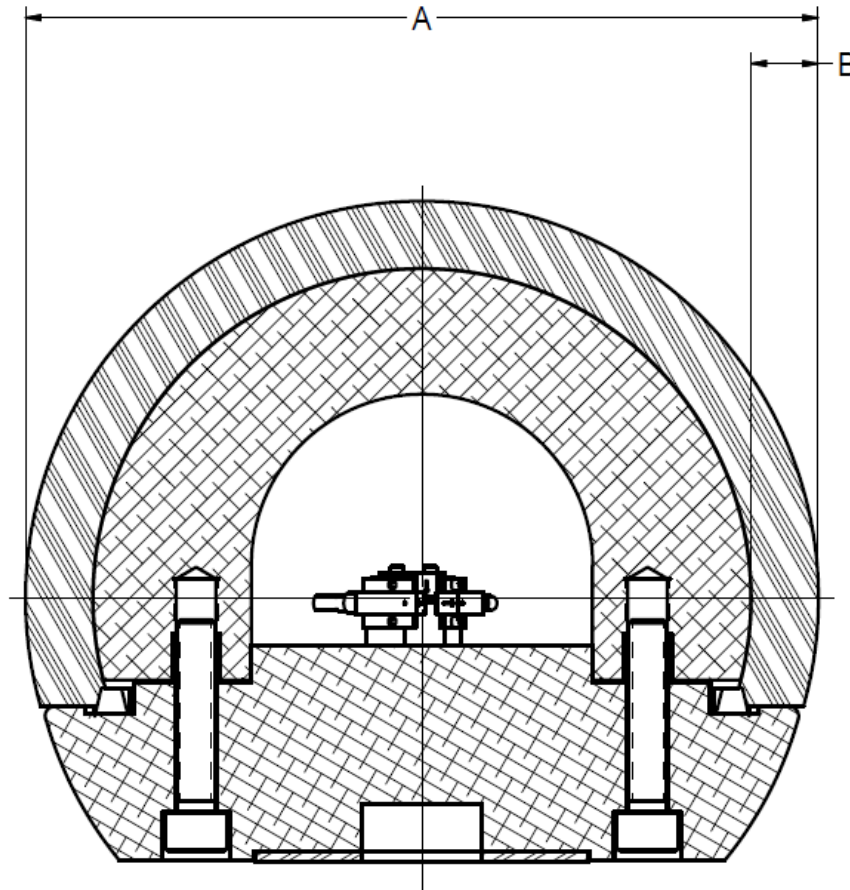
Inspect the head skin for tears or cracks and inspect the skull assembly and back plate for cracks and thread damage. Repair or replace damaged parts.

## 6. External Dimensions

The dimensions for the adult pedestrian headform, which are listed in Table 4, are illustrated in Figure 9.

**Table 4. External dimensions of the adult headform impactor**

Dim.	Description	Spec.	Tolerance
A	Overall diameter	165 mm	$\pm 1$ mm
B	Skin thickness	14 mm	$\pm 0.5$ mm



**Figure 9. External dimensions of the adult headform**

## 7. Mass Measurements

The mass properties of the adult pedestrian headform are listed in Table 5. The moment of inertia about an axis through the center of gravity and perpendicular to the direction of impact shall be within the range of 0.010 to 0.013 kgm<sup>2</sup>. The center of gravity of the headform impactor including instrumentation shall be located in the geometric center of the sphere with a tolerance of  $\pm 2$  mm.

**Table 5. Mass measurements of the adult headform impactor**

<b>Segment</b>	<b>Spec.</b>	<b>Tolerance</b>
Head Assembly	4.5 kg	$\pm 0.1$ kg